

Technische Daten

Polzahl	12
Temperaturbereich	-20 °C bis 130 °C
Kabelklemmbereich	ø6,0 mm - ø10,0 mm
Schutzart	gesteckt IP 66/67

Elektrische Daten

Bemessungsstrom	max. 7 A*
Bemessungsspannung	160 V (AC/DC)
Bemessungsstoßspannung (L-L)	2500 V
Durchgangswiderstand	< 5 mOhm

Steckzyklen	500
-------------	-----

Werte gem. VDE 0110/EN61984, Abschnitt 6.19.2.2

Verschmutzungsgrad	3
Überspannungskategorie	III
max. Aufstellhöhe	2000 m

Werkstoffe

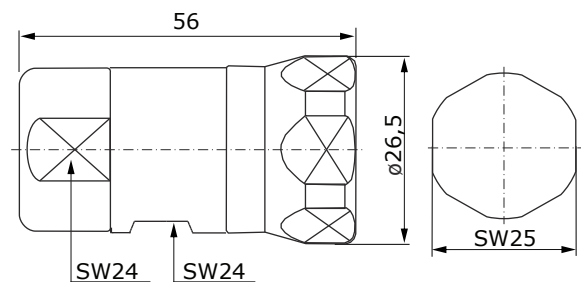
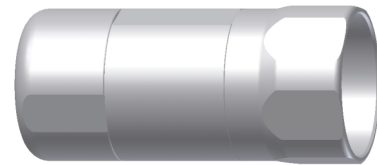
Gehäuse	Edelstahl 1.4404
Klemmring	Edelstahl 1.4404
Isolierkörper	PBT, UL 94/ V0
Kontakte	Messing, vergoldet
Dichtungen	FKM

Kontakte

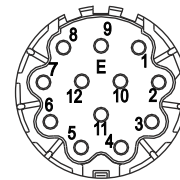
TE Teile Nr.:	60-0001-011-000
IC Ref. Nr.:	60.001.11
Bezeichnung	Kontaktbuchse 1 mm
Anschlussart/ -bereich	Crimp/ 0,14 - 1,0 mm ²
Kontaktückhaltekräfte	> 35 N

Werkzeuge (nicht im Lieferumfang enthalten)

digitale Crimpzange	TE Teile Nr.: C0-0235-000-000 IC Ref. Nr.: C0.235.00
(analoge Crimpzange)	TE Teile Nr.: C0-0101-000-000 IC Ref. Nr.: C0.101.00



Hauptabmessungen
Stecker



Polbild
Ansicht steckseitig



Kontaktbuchse 1 mm
Crimp: 0,14 - 1,0 mm²
TE Teile Nr.: 60-0001-011-000
IC Ref. Nr.: 60.001.11



TE part number: A S N 021 F 01 41 0067 000
IC reference number: A ST N 021 FR 01 41 0067 000

Technical Data

number of pins	12
temperature range	-20 °C to 130 °C
clamping range	ø6.0 mm - ø10.0 mm
protection type	IP 66/67 when connected

Electrical Data

rated current	max. 7 A*
rated voltage	160 V (AC/DC)
rated insulation voltage (L-L)	2500 V
contact resistance	< 5 mOhm

mating cycles	500
---------------	-----

Data according to VDE 0110/EN61984, Paragraph 6.19.2.2

pollution degree	3
over voltage category	III
max. height for operation	2000 m

Material

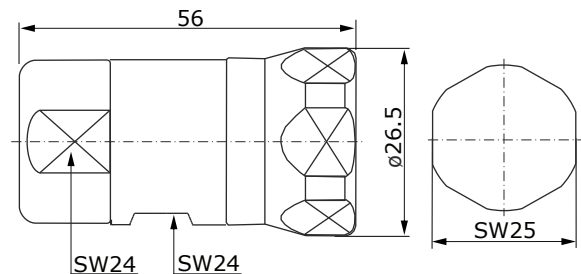
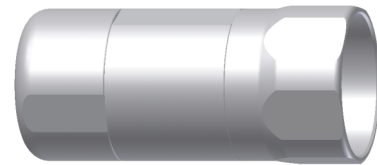
housing	stainless steel 1.4404
clamp ring	stainless steel 1.4404
insulation insert	PBT, UL 94/ V0
contacts	brass, gold plated
seals	FKM

Contacts

type	TE part no.: 60-0001-011-000
cross-section	IC ref. no.: 60.001.11
contact retention forces	contact socket 1 mm crimp/ 0.14 - 1.0 mm ² > 35 N

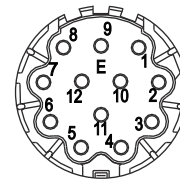
Tools (not part of product contents)

digital crimping tool	TE part no.: C0-0235-000-000 IC ref. no.: C0.235.00
(analog crimping tool)	TE part no.: C0-0101-000-000 IC ref. no.: C0.101.00)



Main Dimensions

plug



Contact Arrangement

mating view



Contact Socket 1 mm

crimp: 0.14 - 1.0 mm²
TE part no.: 60-0001-011-000
IC ref. no.: 60.001.11

