

Elektrische Werte

*Bemessungsstrom	64 A
Durchgangswiderstand	< 1 mOhm

Werkstoff

Kontakt	Messing, vergoldet
---------	--------------------

Anschluß

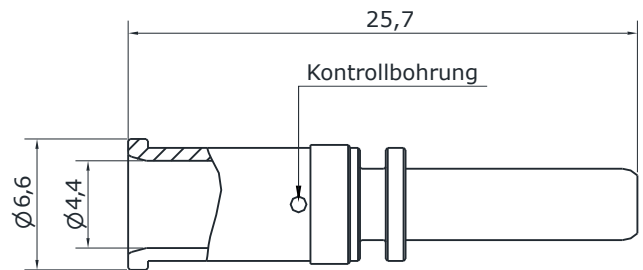
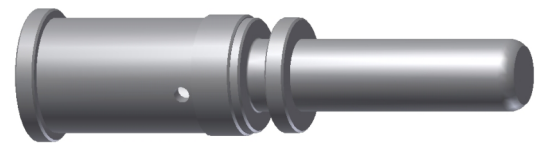
Anschlußart	crimp
Anschlußbereich	6,0 mm ² - 10,0 mm ²
Abisolierlänge	10 mm
Crimpeinstellungen	sind individuell zu wählen

Mechanische Werte

Steckzyklen	500
-------------	-----

Werkzeuge (nicht im Lieferumfang enthalten)

analoge Crimpzange	Best.-Nr. C0.008.00
(Positioniereinsatz für 3,6mm Kontakte	Best.-Nr. C0.249.00)



Hauptabmessungen

Kontaktbuchse





Contact Pin $\varnothing 3,6\text{mm}$

for: - 917, 1-pol

order code: 61.215.11

Electrical Data

*nominal current 64 A
contact resistance < 1 mOhm

Material

contact brass, gold plated

Termination

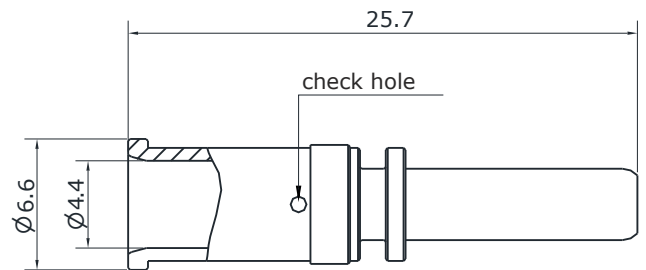
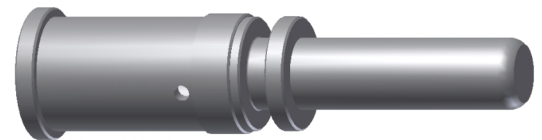
kind of termination crimp
cross section 6,0 mm² - 10,0 mm²
stripping length 10 mm
crimp settings select individually

Mechanical Data

mating cycles 500

Tools (not part of product contents)

(analog crimping tool order code: C0.008.00)
(positioner for 3,6mm Contact order code: C0.249.00)



Main Dimension

contact socket

