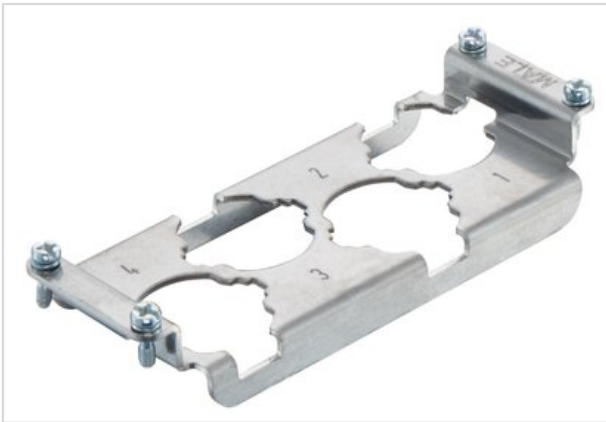


## Frame 4xHC250-M (invers)



|                    |   |
|--------------------|---|
| Part number        | 09 11 000 9941  |
| Specification      | Frame 4xHC250-M (invers)  |
| HARTING eCatalogue | <a href="https://b2b.harting.com/09110009941">https://b2b.harting.com/09110009941</a> |

### Identification

|                              |  |
|------------------------------|--|
| Category                     | Accessories  |
| Series of hoods/housings     | Han <sup>®</sup> HPR                                   |
| Type of accessory            | Frame  |
| Description of the accessory | for male inserts<br>4x Han <sup>®</sup> HC Modular 250 |

### Version

|      |      |
|------|------|
| Size | 24 B |
|------|------|

### Technical characteristics

|                   |                         |
|-------------------|-------------------------|
| Tightening torque | 0.5 Nm Fixing screws M3 |
|-------------------|-------------------------|

### Material properties

|                             |           |
|-----------------------------|-----------|
| Material (accessories)      | Metal     |
| RoHS                        | compliant |
| ELV status                  | compliant |
| China RoHS                  | e         |
| REACH Annex XVII substances | No        |
| REACH ANNEX XIV substances  | No        |
| REACH SVHC substances       | No        |

### Commercial data

|                |        |
|----------------|--------|
| Packaging size | 1      |
| Net weight     | 56.7 g |



Pushing Performance

## Commercial data

|                                |   |
|--------------------------------|---|
| Country of origin              | Germany   |
| European customs tariff number | 85389099  |
| eCl@ss                         | 27440210 Fixing element for industrial connectors |