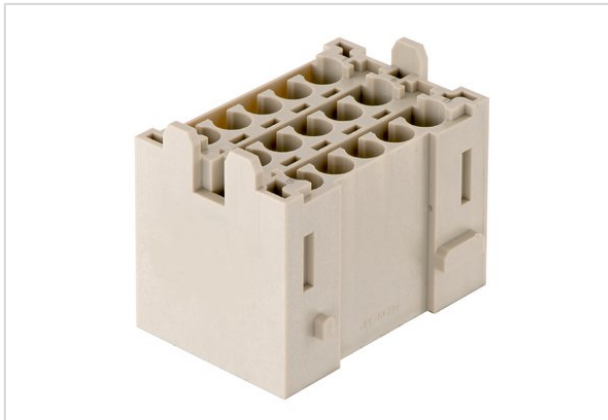


Han 15E Male Multiplier Block



Part number	09 14 015 3001
Specification	Han 15E Male Multiplier Block
HARTING eCatalogue	https://b2b.harting.com/09140153001

Identification

Category	Inserts
Series	Han-Yellock®
Element	Multiplier block

Version

Termination method	Crimp termination
Gender	Male
Number of contacts	15
Details	Please order crimp contacts separately.

Technical characteristics

Conductor cross-section	0.14 ... 4 mm ²
Rated current	16 A
Rated voltage	500 V
Rated impulse voltage	6 kV
Pollution degree	3
Insulation resistance	>10 ¹⁰ Ω
Limiting temperature	-40 ... +125 °C
Mating cycles	≥500

Material properties

Material (insert)	Polycarbonate
Colour (insert)	RAL 7032 (pebble grey)
Material flammability class acc. to UL 94	V-0



Pushing Performance

Material properties

RoHS	compliant
ELV status	compliant
China RoHS	e
REACH Annex XVII substances	No
REACH ANNEX XIV substances	No
REACH SVHC substances	No

Commercial data

Packaging size	1
Net weight	33.3 g
Country of origin	Germany
European customs tariff number	85389099
eCl@ss	27440205 Contact insert for industrial connectors