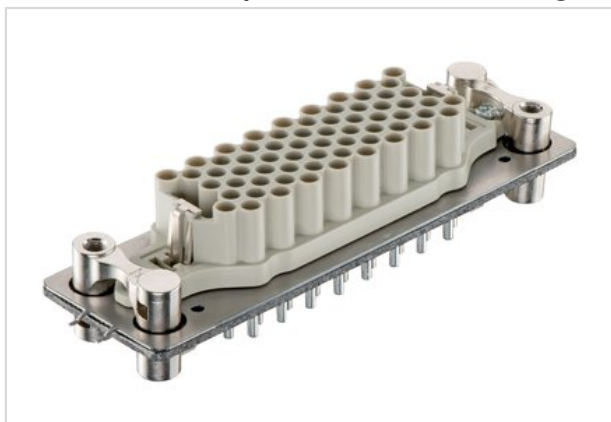


## Han 64EEE panel feed through



Part number	09 32 064 0001
Specification	Han 64EEE panel feed through
HARTING eCatalogue	<a href="https://b2b.harting.com/09320640001">https://b2b.harting.com/09320640001</a>

### Identification

Category	Inserts
Series	Han <sup>®</sup> EEE
Element	Panel feed through

### Version

Termination method	Crimp termination
Gender	Male Female
Size	24 B
Number of contacts	64
PE contact	Yes

### Technical characteristics

Rated current	16 A
Rated voltage	500 V
Rated impulse voltage	6 kV
Pollution degree	3
Insulation resistance	$>10^{10} \Omega$
Limiting temperature	-40 ... +125 °C
Mating cycles	$\geq 500$

### Material properties

Material (insert)	Polycarbonate
Colour (insert)	RAL 7032 (pebble grey)



Pushing Performance

## Material properties

RoHS	compliant with exemption
RoHS exemptions	6(c): Copper alloy containing up to 4 % lead by weight
ELV status	compliant with exemption
China RoHS	50
REACH Annex XVII substances	No
REACH ANNEX XIV substances	No
REACH SVHC substances	Yes
REACH SVHC substances	Lead

## Specifications and approvals

Specifications	EN 60664-1 IEC 61984
----------------	-------------------------

## Commercial data

Packaging size	1
Net weight	288.67 g
Country of origin	Germany
European customs tariff number	85389099
eCl@ss	27440205 Contact insert for industrial connectors