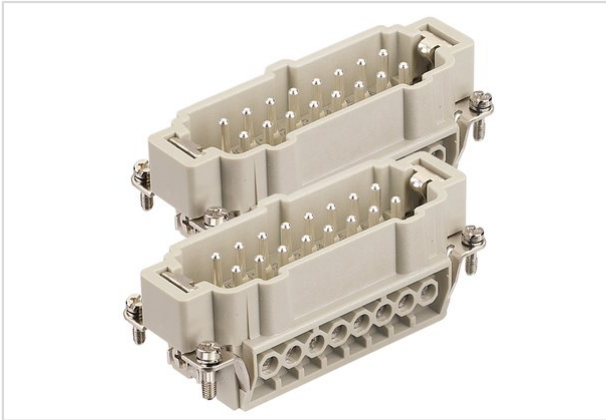


Han 16E M insert screw (17-32)



Part number	09 33 016 2611
Specification	Han 16E M insert screw (17-32)
HARTING eCatalogue	https://b2b.harting.com/09330162611

Identification

Category	Inserts
Series	Han E [®]
Specification	Continuing marking

Version

Termination method	Screw termination
Gender	Male
Size	32 B
With wire protection	Yes
Number of contacts	32
PE contact	Yes
Contact identification	17 ... 32
Details	You need two inserts for a complete assembly!

Technical characteristics

Conductor cross-section	0.75 ... 2.5 mm ²
Conductor cross-section	AWG 18 ... AWG 14
Rated current	16 A
Rated voltage	500 V
Rated impulse voltage	6 kV
Pollution degree	3
Rated voltage acc. to UL	600 V
Rated voltage acc. to CSA	600 V
Insulation resistance	>10 ¹⁰ Ω



Pushing Performance

Technical characteristics

Contact resistance	≤1 mΩ
Limiting temperature	-40 ... +125 °C
Stripping length	7.5 mm
Tightening torque	0.5 Nm
Mating cycles	≥500

Material properties

Material (insert)	Polycarbonate
Colour (insert)	RAL 7032 (pebble grey)
Material (contacts)	Copper alloy
Surface (contacts)	Silver plated
Material flammability class acc. to UL 94	V-0
RoHS	compliant with exemption
RoHS exemptions	6(c): Copper alloy containing up to 4 % lead by weight
ELV status	compliant with exemption
China RoHS	50
REACH Annex XVII substances	No
REACH ANNEX XIV substances	No
REACH SVHC substances	Yes
REACH SVHC substances	Lead

Specifications and approvals

Specifications	EN 60664-1 IEC 61984
Approvals	DNV GL
UL / CSA	UL 1977 ECBT2.E235076 UL 2237 PVVA2.E318390 CSA-C22.2 No. 182.3 PVVA8.E318390

Commercial data

Packaging size	1
Net weight	85.8 g
Country of origin	Germany
European customs tariff number	85366990



Pushing Performance

Commercial data

eCl@ss

27440205 Contact insert for industrial connectors