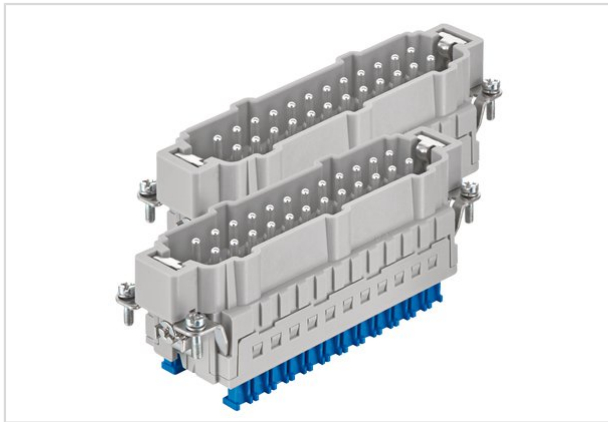


Han 24ES Press - M (25-48)



Part number	09 33 024 2688
Specification	Han 24ES Press - M (25-48)
HARTING eCatalogue	https://b2b.harting.com/09330242688

Identification

Category	Inserts
Series	Han [®] ES Press
Specification	Continuing marking

Version

Termination method	Cage-clamp termination
Gender	Male
Size	48 B
Number of contacts	48
PE contact	Yes
Contact identification	25 ... 48
Details	Blue slide for hoods/housings high construction only You need two inserts for a complete assembly!

Technical characteristics

Conductor cross-section	0.14 ... 2.5 mm ²
Conductor cross-section	AWG 26 ... AWG 14
Rated current	16 A
Rated voltage	500 V
Rated impulse voltage	6 kV
Pollution degree	3
Rated voltage acc. to UL	600 V
Rated voltage acc. to CSA	600 V



Pushing Performance

Technical characteristics

Insulation resistance	$>10^{10} \Omega$
Contact resistance	$\leq 3 \text{ m}\Omega$
Limiting temperature	-40 ... +125 °C
Stripping length	9 ... 11 mm
Mating cycles	≥ 500

Material properties

Material (insert)	Polycarbonate
Colour (insert)	RAL 7032 (pebble grey)
Material (contacts)	Copper alloy
Surface (contacts)	Silver plated
Material flammability class acc. to UL 94	V-0
RoHS	compliant with exemption
RoHS exemptions	6(c): Copper alloy containing up to 4 % lead by weight
ELV status	compliant with exemption
China RoHS	50
REACH Annex XVII substances	No
REACH ANNEX XIV substances	No
REACH SVHC substances	Yes
REACH SVHC substances	Lead

Specifications and approvals

Specifications	EN 60664-1 IEC 61984
Approvals	DNV GL
UL / CSA	UL 1977 ECBT2.E235076 CSA-C22.2 No. 182.3 ECBT8.E235076

Commercial data

Packaging size	1
Net weight	162 g
Country of origin	Germany
European customs tariff number	85366990
eCl@ss	27440205 Contact insert for industrial connectors