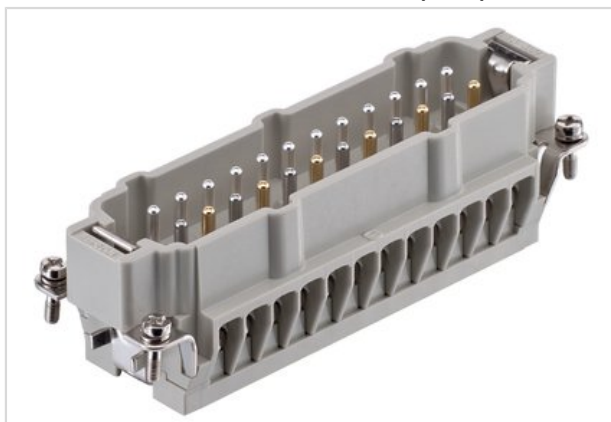


Han E 24 M-ScREW Fe(Au)/CuNi/AgType J



Part number	09 33 024 2689
Specification	Han E 24 M-ScREW Fe(Au)/CuNi/AgType J
HARTING eCatalogue	https://b2b.harting.com/09330242689

Identification

Category	Inserts
Series	Han [®] Thermocouple
Identification	Han E [®]

Version

Termination method	Screw termination
Gender	Male
Size	24 B
With wire protection	Yes
Number of contacts	24
PE contact	Yes
Details	Also suitable for standard contacts

Technical characteristics

Conductor cross-section	1 ... 2.5 mm ²
Rated current	16 A
Rated voltage	400 V
Rated impulse voltage	6 kV
Pollution degree	3
Insulation resistance	>10 ¹⁰ Ω
Limiting temperature	-40 ... +125 °C
Tightening torque	0.5 Nm



Pushing Performance

Technical characteristics

Mating cycles	≥500
---------------	------

Material properties

Material (insert)	Polycarbonate
Colour (insert)	RAL 7032 (pebble grey)
Material flammability class acc. to UL 94	V-0
RoHS	compliant with exemption
RoHS exemptions	6(c): Copper alloy containing up to 4 % lead by weight
ELV status	compliant with exemption
China RoHS	50
REACH Annex XVII substances	No
REACH ANNEX XIV substances	No
REACH SVHC substances	Yes
REACH SVHC substances	Lead

Specifications and approvals

Specifications	EN 60664-1 IEC 61984
Approvals	DNV GL

Commercial data

Packaging size	1
Net weight	117.38 g
Country of origin	Germany
European customs tariff number	85366990
eCl@ss	27440205 Contact insert for industrial connectors