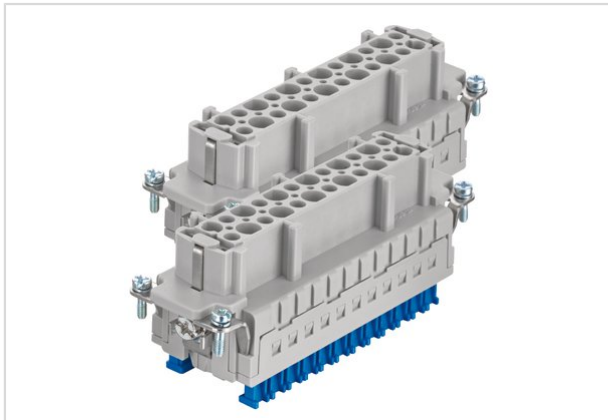


## Han 24ES Press - F (25-48)



Part number	09 33 024 2788
Specification	Han 24ES Press - F (25-48)
HARTING eCatalogue	<a href="https://b2b.harting.com/09330242788">https://b2b.harting.com/09330242788</a>

### Identification

Category	Inserts
Series	Han <sup>®</sup> ES Press
Specification	Continuing marking

### Version

Termination method	Cage-clamp termination
Gender	Female
Size	48 B
Number of contacts	48
PE contact	Yes
Contact identification	25 ... 48
Details	Blue slide for hoods/housings high construction only You need two inserts for a complete assembly!

### Technical characteristics

Conductor cross-section	0.14 ... 2.5 mm <sup>2</sup>
Conductor cross-section	AWG 26 ... AWG 14
Rated current	16 A
Rated voltage	500 V
Rated impulse voltage	6 kV
Pollution degree	3
Rated voltage acc. to UL	600 V
Rated voltage acc. to CSA	600 V



Pushing Performance

## Technical characteristics

Insulation resistance	$>10^{10} \Omega$
Contact resistance	$\leq 3 \text{ m}\Omega$
Limiting temperature	-40 ... +125 °C
Stripping length	9 ... 11 mm
Mating cycles	$\geq 500$

## Material properties

Material (insert)	Polycarbonate
Colour (insert)	RAL 7032 (pebble grey)
Material (contacts)	Copper alloy
Surface (contacts)	Silver plated
Material flammability class acc. to UL 94	V-0
RoHS	compliant with exemption
RoHS exemptions	6(c): Copper alloy containing up to 4 % lead by weight
ELV status	compliant with exemption
China RoHS	50
REACH Annex XVII substances	No
REACH ANNEX XIV substances	No
REACH SVHC substances	Yes
REACH SVHC substances	Lead

## Specifications and approvals

Specifications	EN 60664-1 IEC 61984
Approvals	DNV GL
UL / CSA	UL 1977 ECBT2.E235076 CSA-C22.2 No. 182.3 ECBT8.E235076

## Commercial data

Packaging size	1
Net weight	171 g
Country of origin	Germany
European customs tariff number	85366990
eCl@ss	27440205 Contact insert for industrial connectors