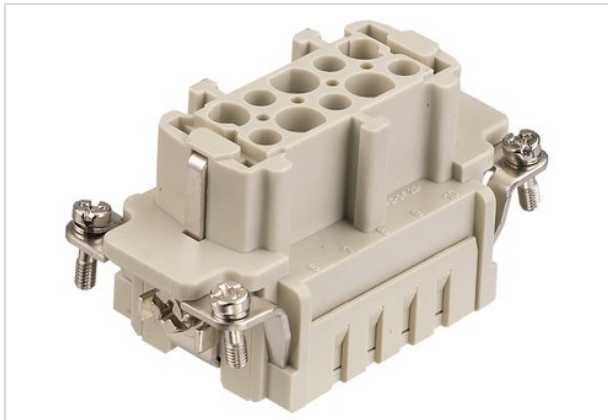


## Han 10Ex-F-c



Part number	09 36 010 2702
Specification	Han 10Ex-F-c
HARTING eCatalogue	<a href="https://b2b.harting.com/09360102702">https://b2b.harting.com/09360102702</a>

### Identification

Category	Inserts
Series	Han <sup>®</sup> Ex

### Version

Termination method	Crimp termination
Gender	Female
Size	10 B
Number of contacts	10
PE contact	Yes
Details	Please order crimp contacts separately.
Details	ATTENTION! Only to be used with Han <sup>®</sup> Ex hoods and housings!

### Technical characteristics

Conductor cross-section	0.14 ... 4 mm <sup>2</sup>
Rated current	16 A
Rated voltage	90 V
Insulation resistance	>10 <sup>10</sup> Ω
Limiting temperature	-20 ... +40 °C
Mating cycles	≥500

### Material properties

Material (insert)	Polycarbonate
Colour (insert)	RAL 7032 (pebble grey)
Material flammability class acc. to UL 94	V-0



Pushing Performance

## Material properties

RoHS	compliant
ELV status	compliant
China RoHS	e
REACH Annex XVII substances	No
REACH ANNEX XIV substances	No
REACH SVHC substances	No

## Commercial data

Packaging size	1
Net weight	50 g
Country of origin	Germany
European customs tariff number	85366990
eCl@ss	27440205 Contact insert for industrial connectors