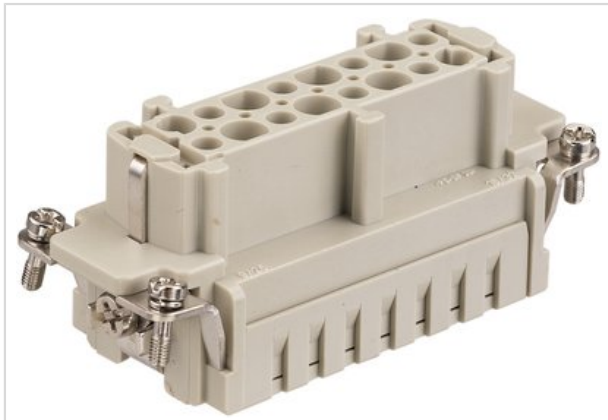


Han 16Ex-F-c



Part number	09 36 016 2702
Specification	Han 16Ex-F-c
HARTING eCatalogue	https://b2b.harting.com/09360162702

Identification

Category	Inserts
Series	Han [®] Ex

Version

Termination method	Crimp termination
Gender	Female
Size	16 B
Number of contacts	16
PE contact	Yes
Details	Please order crimp contacts separately.
Details	ATTENTION! Only to be used with Han [®] Ex hoods and housings!

Technical characteristics

Conductor cross-section	0.14 ... 4 mm ²
Rated current	16 A
Rated voltage	90 V
Insulation resistance	>10 ¹⁰ Ω
Limiting temperature	-20 ... +40 °C
Mating cycles	≥500

Material properties

Material (insert)	Polycarbonate
Colour (insert)	RAL 7032 (pebble grey)
Material flammability class acc. to UL 94	V-0



Pushing Performance

Material properties

RoHS compliant

ELV status compliant

China RoHS e

REACH Annex XVII substances No

REACH ANNEX XIV substances No

REACH SVHC substances No

Commercial data

Packaging size 1

Net weight 64.4 g

Country of origin Germany

European customs tariff number 85366990

eCl@ss 27440205 Contact insert for industrial connectors