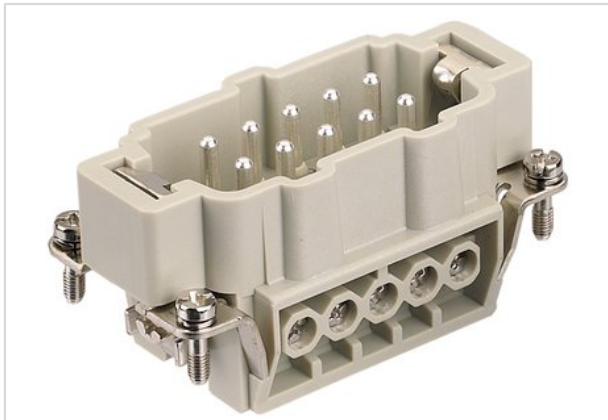


Han 10Ex UL-M-s



Part number	09 36 510 2601
Specification	Han 10Ex UL-M-s
HARTING eCatalogue	https://b2b.harting.com/09365102601

Identification

Category	Inserts
Series	Han [®] Ex

Version

Termination method	Screw termination
Gender	Male
Size	10 B
Number of contacts	10
PE contact	Yes
Details	for US purposes only
Details	ATTENTION! Only to be used with Han [®] Ex hoods and housings!

Technical characteristics

Conductor cross-section	0.75 ... 2.5 mm ²
Rated current	16 A
Rated voltage	90 V
Insulation resistance	>10 ¹⁰ Ω
Contact resistance	≤1 mΩ
Limiting temperature	-20 ... +40 °C
Tightening torque	0.5 Nm
Mating cycles	≥500

Material properties

Material (insert)	Polycarbonate
-------------------	---------------



Pushing Performance

Material properties

Colour (insert)	RAL 7032 (pebble grey)
Material (contacts)	Copper alloy
Surface (contacts)	Silver plated
Material flammability class acc. to UL 94	V-0
RoHS	compliant with exemption
RoHS exemptions	6(c): Copper alloy containing up to 4 % lead by weight
ELV status	compliant with exemption
China RoHS	50
REACH Annex XVII substances	No
REACH ANNEX XIV substances	No
REACH SVHC substances	Yes
REACH SVHC substances	Lead

Commercial data

Packaging size	1
Net weight	64.2 g
Country of origin	Germany
European customs tariff number	85366990
eCl@ss	27440205 Contact insert for industrial connectors