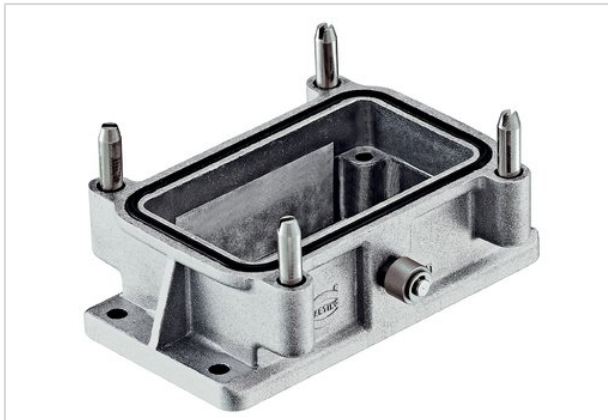


Han EMC Base Panel for Central Lever



Part number	09 62 010 0381
Specification	Han EMC Base Panel for Central Lever
HARTING eCatalogue	https://b2b.harting.com/09620100381

Identification

Category	Hoods/Housings
Series of hoods/housings	Han [®] EMC
Type of hood/housing	Bulkhead mounted housing

Version

Locking type	Central locking lever (on the hood)
Size	10 B
Field of application	Hoods/Housings for higher EMC requirements

Technical characteristics

Limiting temperature	-40 ... +125 °C
Degree of protection acc. to IEC 60529	IP65
Type rating acc. to UL 50 / UL 50E	4 12

Material properties

Material (hood/housing)	Aluminium die-cast
Surface (hood/housing)	Uncoated
Colour (hood/housing)	Unpainted
Material (seal)	NBR
RoHS	compliant
ELV status	compliant
China RoHS	e
REACH Annex XVII substances	No



Pushing Performance

Material properties

REACH ANNEX XIV substances	No
REACH SVHC substances	No

Specifications and approvals

Approvals	DNV GL
UL / CSA	UL 1977 ECBT2.E235076 CSA-C22.2 No. 182.3 ECBT8.E235076

Commercial data

Packaging size	1
Net weight	133.8 g
Country of origin	Germany
European customs tariff number	85389099
eCl@ss	27440202 Shell for industrial connectors