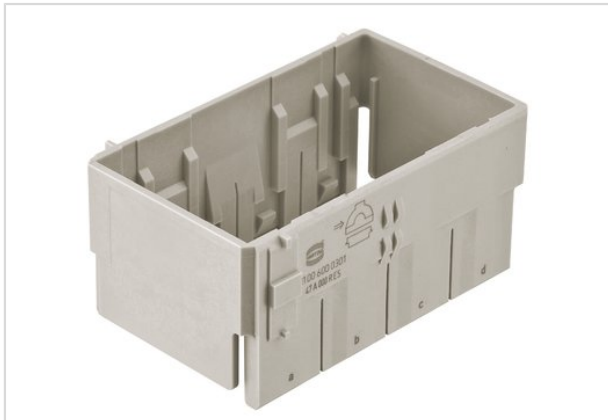


Han Yellock Adapter Frame Han-Modular 60



Part number	11 00 600 0301
Specification	Han Yellock Adapter Frame Han-Modular 60
HARTING eCatalogue	https://b2b.harting.com/11006000301

Identification

Category	Accessories
Series	Han-Yellock®
Type of accessory	Adapter frames
Description of the accessory	for bulkhead mounted housings for Han-Yellock® 60

Material properties

Material (accessories)	Polycarbonate
Colour (accessories)	RAL 7032 (pebble grey)
Material flammability class acc. to UL 94	V-0
RoHS	compliant
ELV status	compliant
China RoHS	e
REACH Annex XVII substances	No
REACH ANNEX XIV substances	No
REACH SVHC substances	No

Specifications and approvals

Specifications	EN 60664-1 IEC 61984
Approvals	DNV GL

Commercial data

Packaging size	1
----------------	---



Pushing Performance

Commercial data

Net weight	13.16 g
Country of origin	Germany
European customs tariff number	85389099
eCl@ss	27440210 Fixing element for industrial connectors