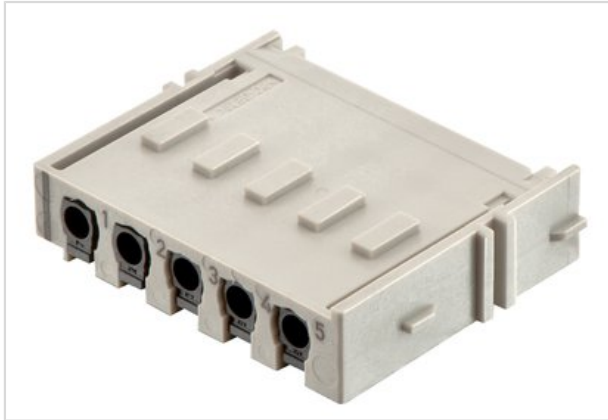


Han Yellock Module QL 10A, 1,5qmm



Part number	11 05 105 2634
Specification	Han Yellock Module QL 10A, 1,5qmm
HARTING eCatalogue	https://b2b.harting.com/11051052634

Identification

Category	Inserts
Series	Han-Yellock®
Element	Module

Version

Termination method	Han-Quick Lock® termination
Gender	Male
Number of contacts	5
Details	Black slide

Technical characteristics

Conductor cross-section	0.25 ... 1.5 mm ²
Rated current	10 A
Rated voltage	500 V
Rated impulse voltage	6 kV
Pollution degree	3
Insulation resistance	>10 ¹⁰ Ω
Contact resistance	≤2 mΩ
Limiting temperature	-40 ... +125 °C
Stripping length	10 mm
Mating cycles	≥500

Material properties

Material (insert)	Polycarbonate
-------------------	---------------



Pushing Performance

Material properties

Colour (insert)	RAL 7032 (pebble grey)
Material (contacts)	Copper alloy
Surface (contacts)	Silver plated
Material flammability class acc. to UL 94	V-0
RoHS	compliant
ELV status	compliant
China RoHS	e
REACH Annex XVII substances	No
REACH ANNEX XIV substances	No
REACH SVHC substances	No

Specifications and approvals

Specifications	EN 60664-1 IEC 61984
Approvals	DNV GL

Commercial data

Packaging size	2
Net weight	12.8 g
Country of origin	Germany
European customs tariff number	85389099
eCl@ss	27440205 Contact insert for industrial connectors