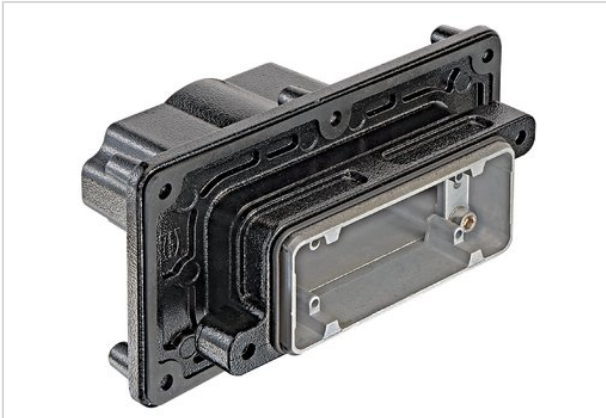


Han 16HPR-PFT housing-M40



Part number	19 40 016 1113
Specification	Han 16HPR-PFT housing-M40
HARTING eCatalogue	https://b2b.harting.com/19400161113

Identification

Category	Hoods/Housings
Series of hoods/housings	Han [®] HPR
Type of hood/housing	Panel feed through housing
Description of hood/housing	for mounting from inside

Version

Locking type	Screw locking
Size	16 B
Version	Top entry
Cable entry	1x M40
Field of application	Hoods/housings for harsh outdoor environments

Technical characteristics

Limiting temperature	-40 ... +125 °C
Tightening torque (screw locking)	4 Nm
Tightening torque	6 Nm Fixing screws
Degree of protection acc. to IEC 60529	IP65 IP68 IP69 / IPX9K acc. to ISO 20653
Type rating acc. to UL 50 / UL 50E	4 4X 12
Thickness of the panel	≥2 mm



Pushing Performance

Material properties

Material (hood/housing)	Aluminium die-cast Corrosion resistant
Surface (hood/housing)	Powder-coated
Colour (hood/housing)	RAL 9005 (jet black)
Material (seal)	NBR
Material (locking)	Stainless steel
RoHS	compliant
ELV status	compliant
China RoHS	e
REACH Annex XVII substances	No
REACH ANNEX XIV substances	No
REACH SVHC substances	No

Specifications and approvals

Approvals	DNV GL
UL / CSA	UL 1977 ECBT2.E235076 CSA-C22.2 No. 182.3 ECBT8.E235076

Commercial data

Packaging size	1
Net weight	1,111 g
Country of origin	China
European customs tariff number	8538900000
eCl@ss	27440202 Shell for industrial connectors