

Electrical Specifications:

- 1. Inductance At 100 KHz, 100 mV 8mADC Blas: 350 uH Min.
- 2. Leakage Inductance 0.3 uH Max, @100KHz 100mV
- 3. Insertion Loss: 1.1 dB Max. @ 1-100 MHz
- 4. Return Loss: 18dB Min. @ 1-30MHz
16dB Min. @ 30-60MHz
12dB Min. @ 60-80MHz
- 5. Cross Talk: 1-100MHz 30dB Min.
- 6. Common Mode Rejection Ratio: 30dB Min. @1-100MHz
- 7. Isolation Voltage @60Hz:1500Vrms (Input To Output) 60 Seconds

Mechanical:

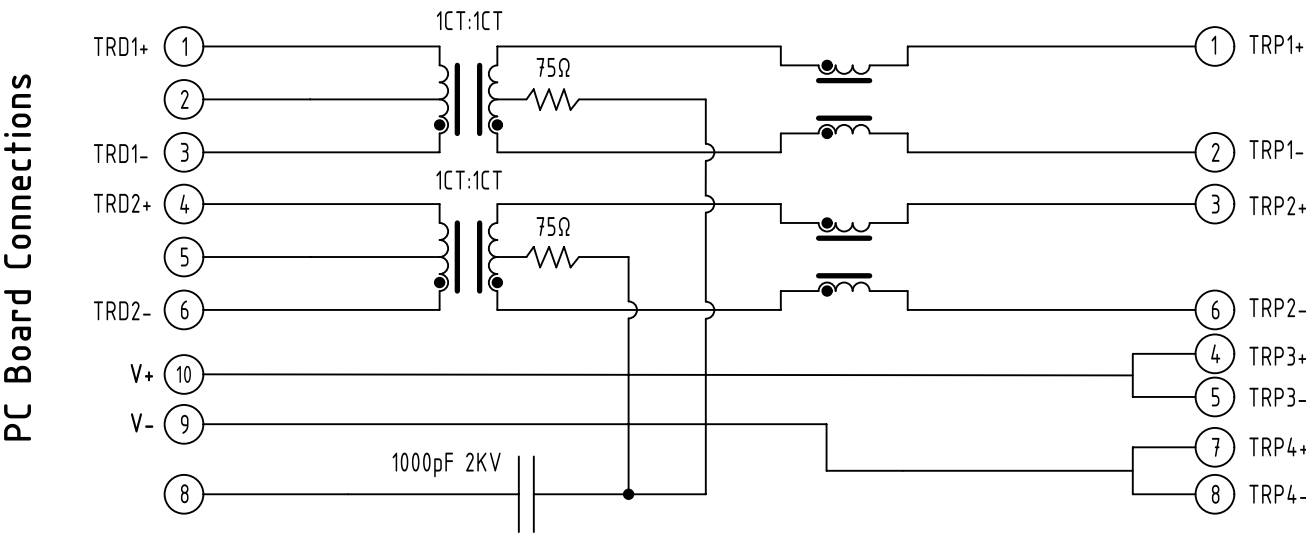
- 1. Housing Material: POLYESTER or HIGH Temp. UL94V-0
- 2. Contact Material: Phosphor Bronze T=0.3mm
- 3. Plating: Gold Plating Over Nickel
- 4. Operating Life: 750 Cycles Min.
- 5. Shield Material: 0.20mm THICKNESS BRASS Plating Nickel

Environmental:

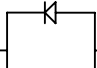
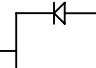
- 1. Storage: -40°C to +85°C
- 2. Operation: -40°C to +85°C

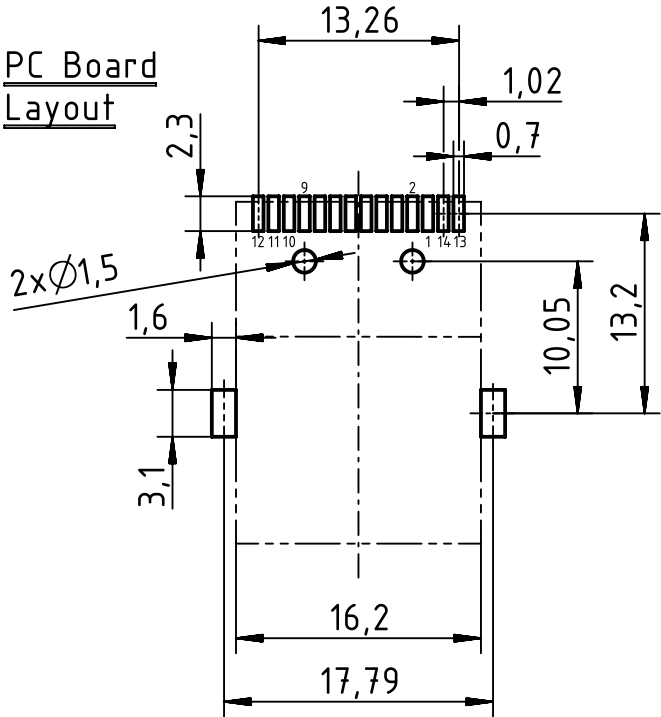
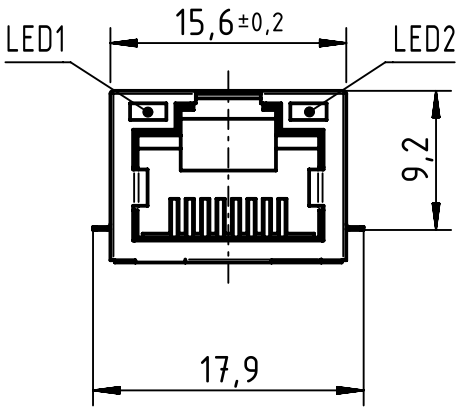
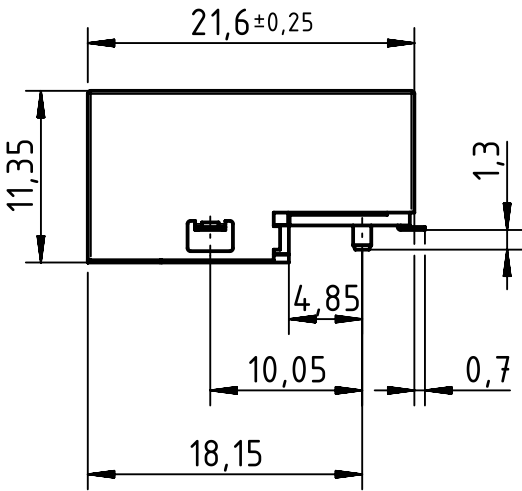
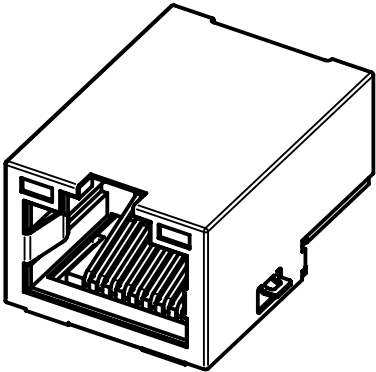
Mates With Modular Plug According To TIA-1096-A



SCHEMATIC



RJ45 Connector

LED DISPLAY	
LED 1	LED 2
YELLOW 12 •  • 11 GREEN	YELLOW 10 •  • 9 GREEN



		All Dimensions in mm Original Size DIN A3		Scale 2:1	Free size tol.	Ref.		
						Sub.		
	All rights reserved			Created by POPESCUD	Inspected by TAMAS	Standardisation HOFFMANN	Date 2016-09-21	State Final Release
	Department EC PD - RO							
	HARTING Electronics GmbH D-32339 Espelkamp			Title RJ45 jack 10/100 Mbit CE biCLED PoE				Doc-Key / ECM-Nr. 100688925/UGD/001/A 500000109076
Type TB				Number 09455511165			Rev. A	Page 1/1