

Electrical Specifications:

- 1. Inductance At 100 KHz, 100 mV 8mADC Blas: 350 uH Min.
- 2. Leakage Inductance 0.3 uH Max, @100KHz 100mV
- 3. Insertion Loss: 1.1 dB Max. @ 1-100 MHz
- 4. Return Loss: 18dB Min. @ 1-30MHz  
16dB Min. @ 30-60MHz  
12dB Min. @ 60-80MHz
- 5. Cross Talk: 1-100MHz 30dB Min.
- 6. Common Mode Rejection Ratio: 30dB Min. @1-100MHz
- 7. Isolation Voltage @60Hz:1500Vrms (Input To Output) 60 Seconds

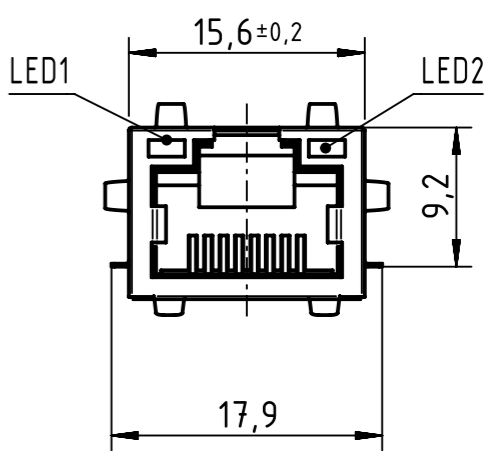
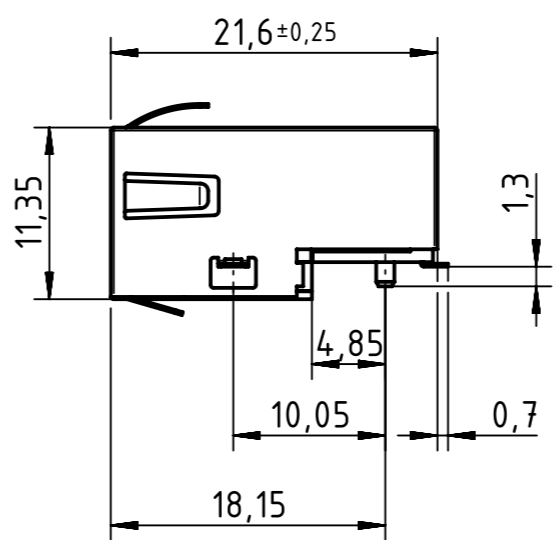
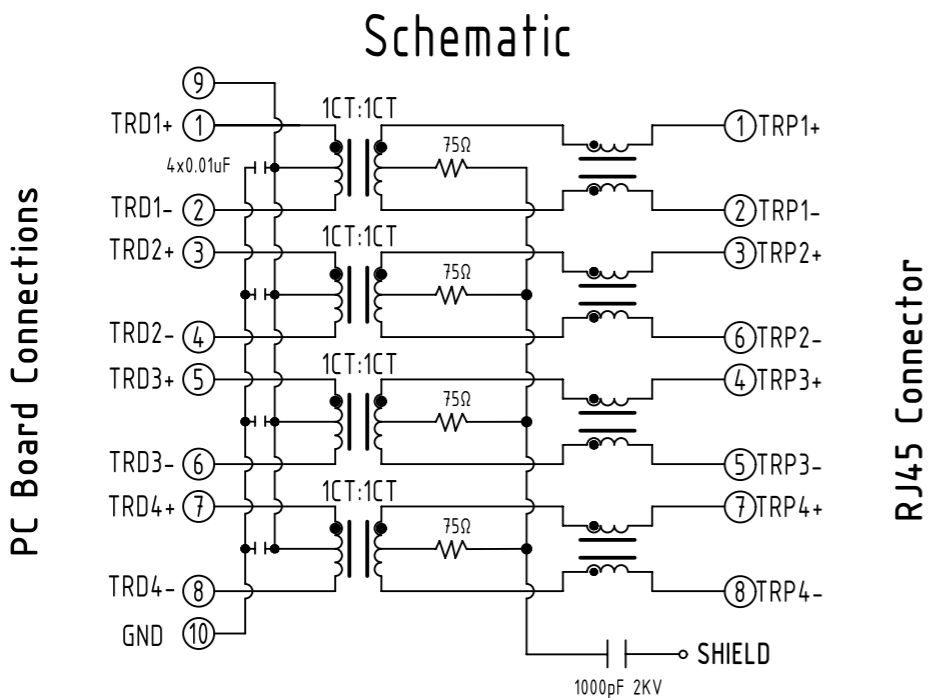
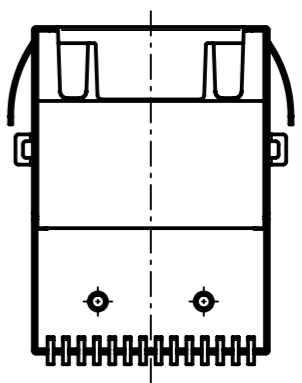
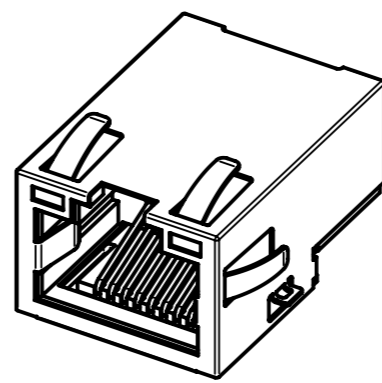
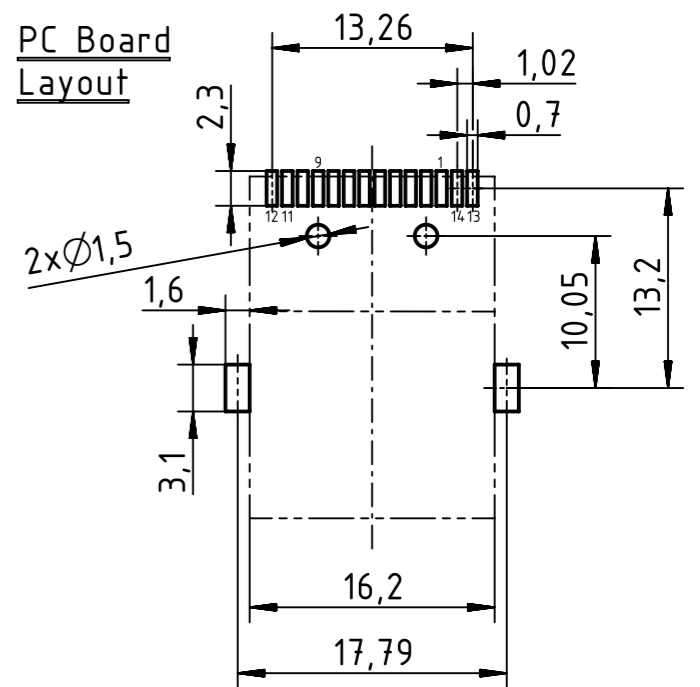
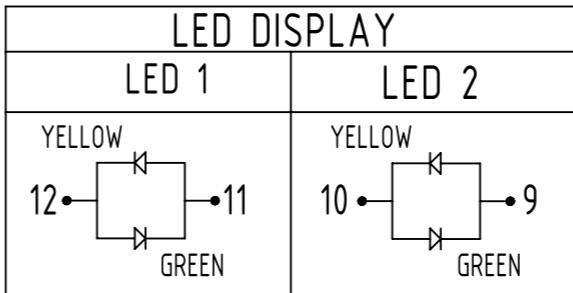
Mechanical:



- 1. Housing Material: POLYESTER or HIGH Temp. UL94V-0
- 2. Contact Material: Phosphor Bronze T=0.3mm
- 3. Plating: Gold Plating Over Nickel
- 4. Operating Life: 750 Cycles Min.
- 5. Shield Material: 0.20mm THICKNESS BRASS Plating Nickel

Environmental:

- 1. Storage: -40°C to +85°C
- 2. Operation: -40°C to +85°C

Mates With Modular Plug According To TIA-1096-A



		All Dimensions in mm Original Size DIN A3		Scale 2:1	Free size tol.		Ref. Sub.	
		All rights reserved Department EC PD - RO		Created by POPESCUD	Inspected by TAMAS	Standardisation HOFFMANN	Date 2016-09-21	State Final Release
HARTING Electronics GmbH D-32339 Espelkamp		Title RJ45 jack 1Gbit CE biCLED						Doc-Key / ECM-Nr. 100688937/UGD/001/A 500000109076
		Type TB	Number 09455511550					Rev. A