

Electrical Specifications:

- 1. Inductance At 100 KHz, 100 mV 8mADC Blas: 350 uH Min.
- 2. Leakage Inductance 0.3 uH Max, @100KHz 100mV
- 3. Insertion Loss: 1.1 dB Max. @ 1-100 MHz
- 4. Return Loss: 18dB Min. @ 1-30MHz
16dB Min. @ 30-60MHz
12dB Min. @ 60-80MHz
- 5. Cross Talk: 1-100MHz 30dB Min.
- 6. Common Mode Rejection Ratio: 30dB Min. @1-100MHz
- 7. Isolation Voltage @60Hz:1500Vrms (Input To Output) 60 Seconds

Mechanical:

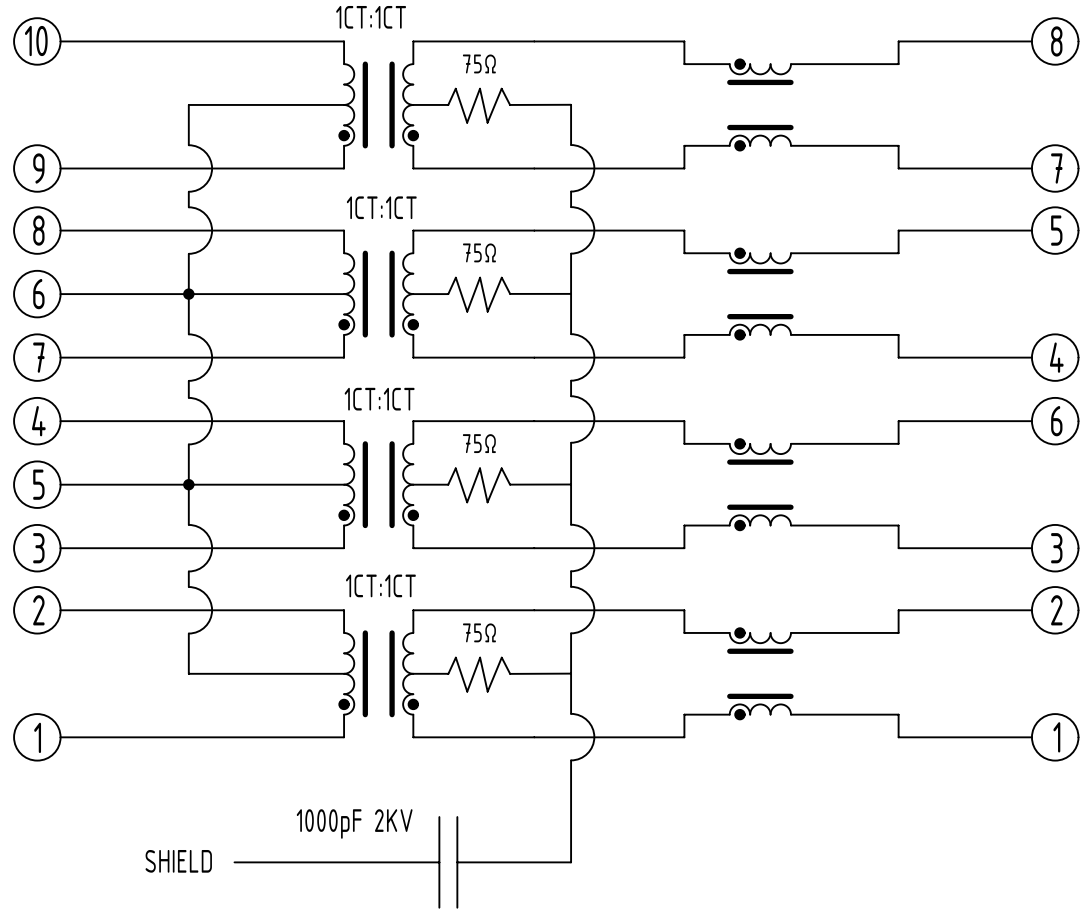
- 1. Housing Material: POLYESTER or HIGH Temp. UL94V-0
- 2. Contact Material: Phosphor Bronze T=0.3mm
- 3. Plating: Gold Plating Over Nickel
- 4. Operating Life: 750 Cycles Min.
- 5. Shield Material: 0.20mm THICKNESS BRASS Plating Nickel

Environmental:

- 1. Storage: -40°C to +85°C
- 2. Operation: -40°C to +85°C

Mates With Modular Plug According To TIA-1096-A

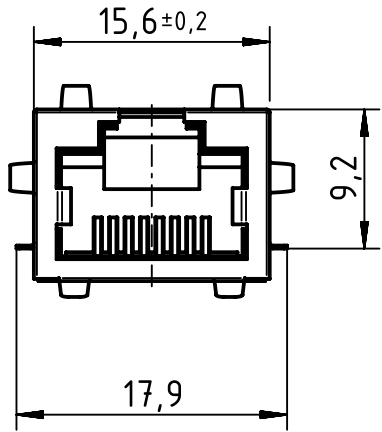
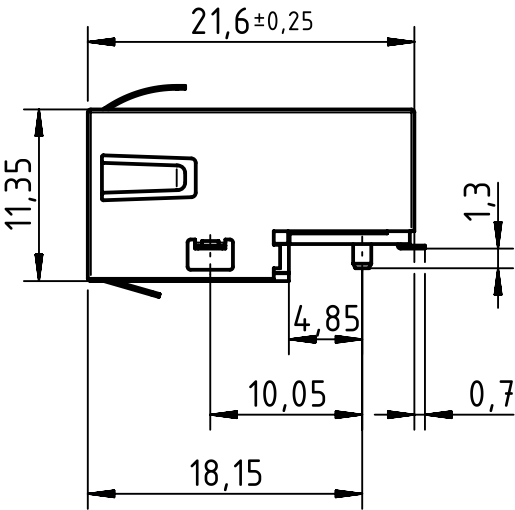
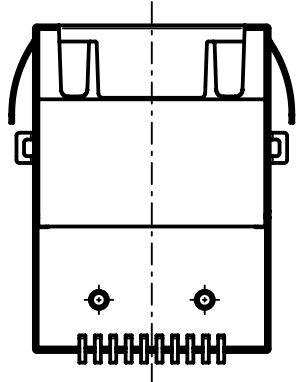
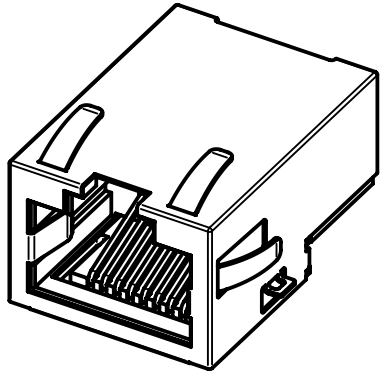
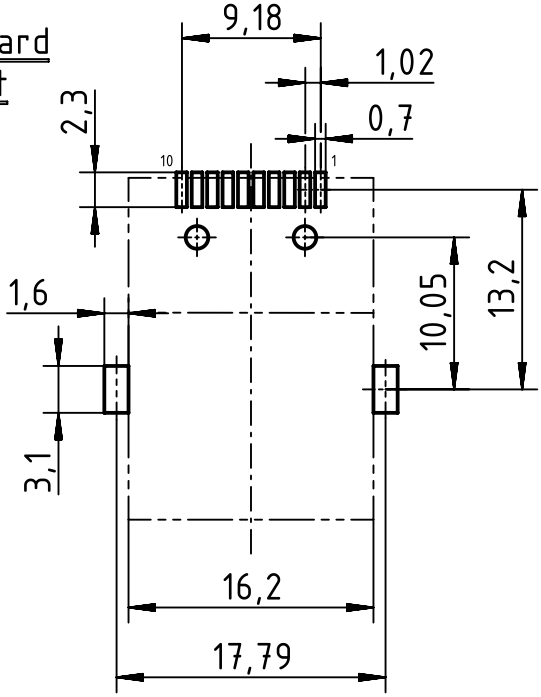
PC Board Connections





SCHEMATIC

RJ45 Connector

PC Board Layout



		All Dimensions in mm Original Size DIN A3		Scale 2:1		Free size tol.		Ref.					
								Sub.					
		All rights reserved		Created by POPESCUD		Inspected by TAMAS		Standardisation HOFFMANN		Date 2016-09-21		State Final Release	
		Department EC PD - RO											
HARTING Electronics GmbH D-32339 Espelkamp		Title RJ45 RJ45 jack 1Gbit CE										Doc-Key / ECM-Nr. 100688987/UGD/001/A 500000109076	
		Type TB		Number 09455511552								Rev. A	