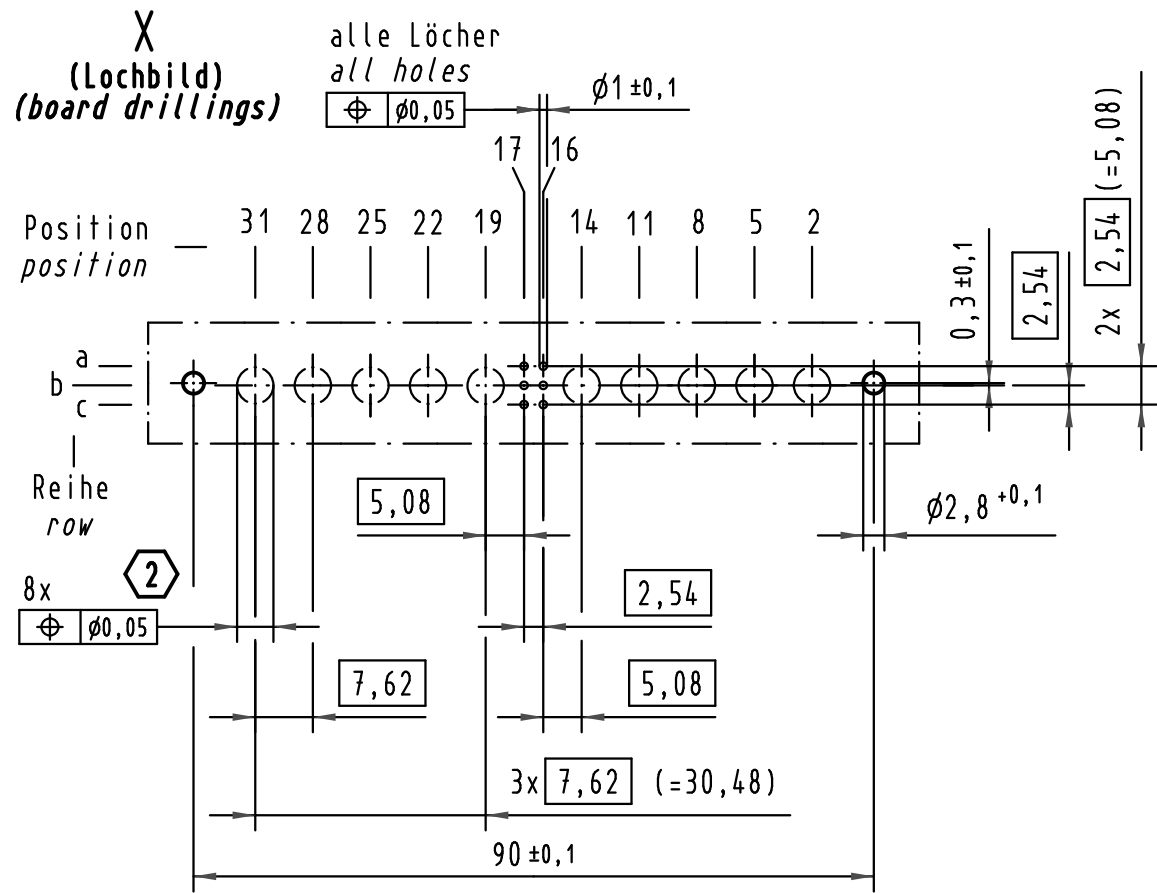
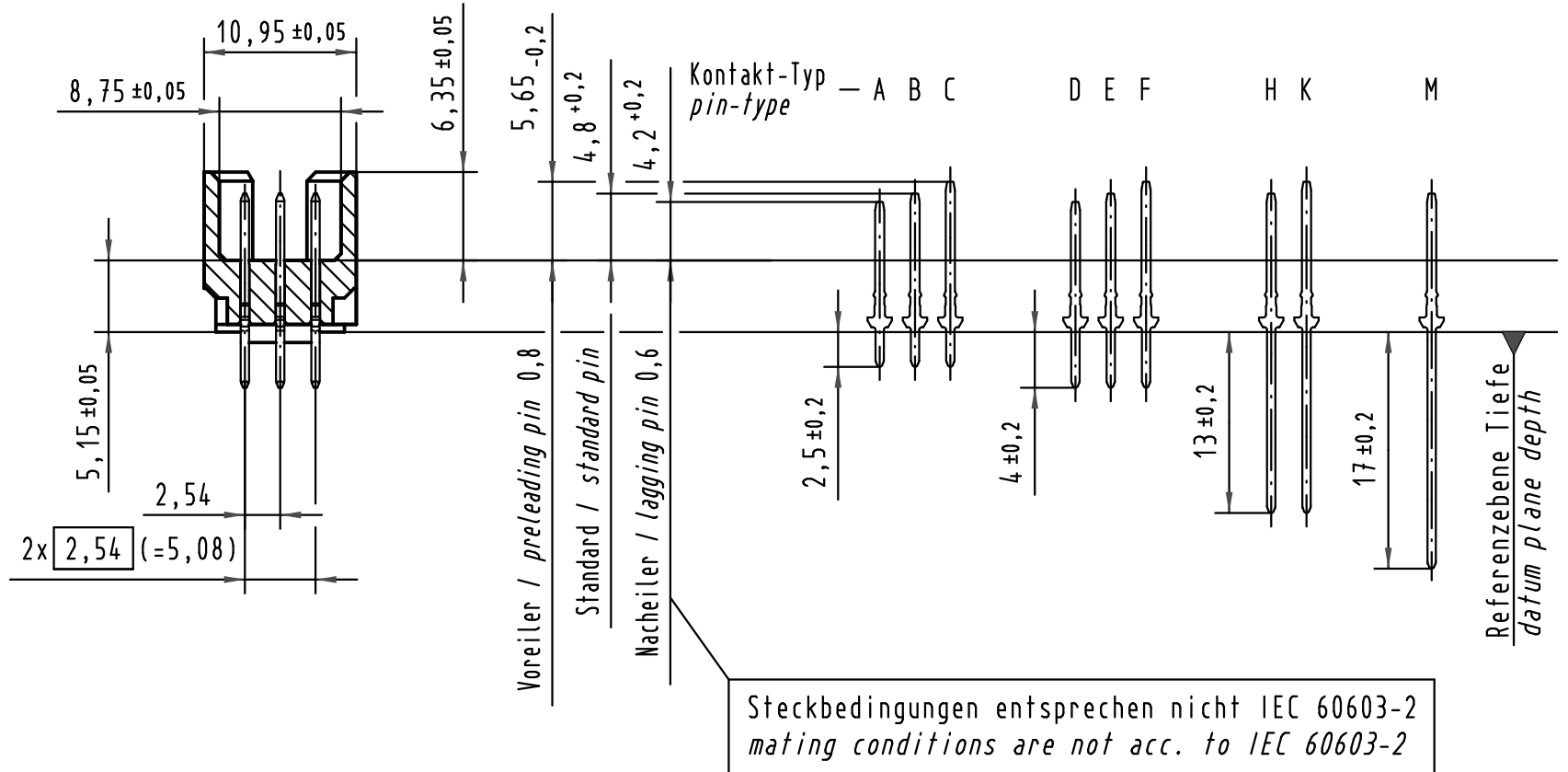


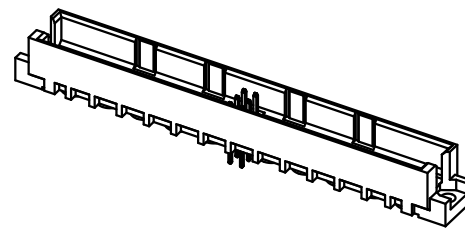
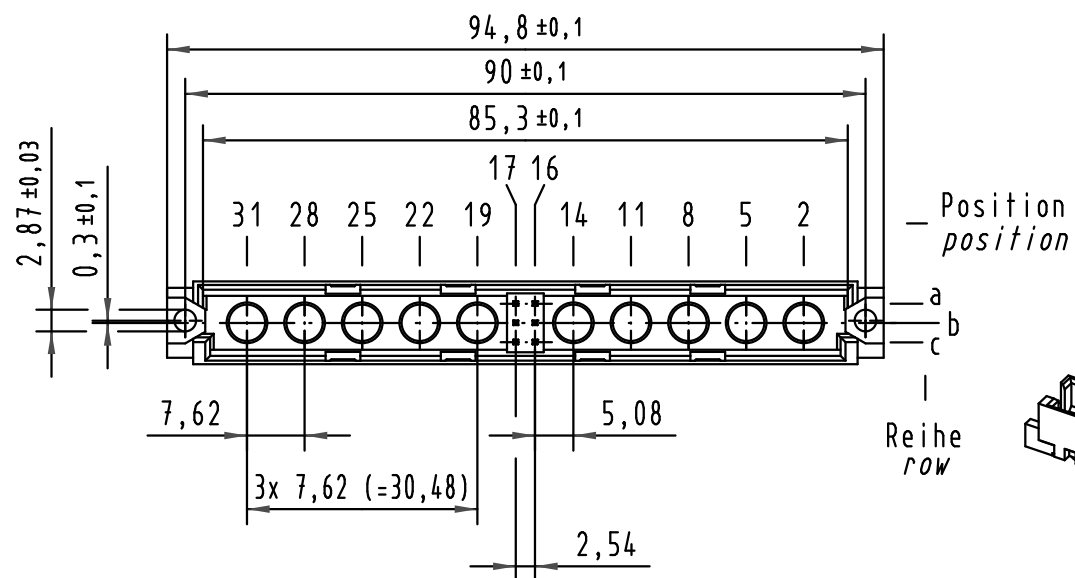
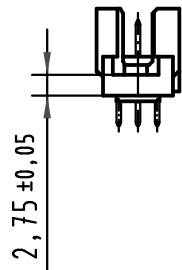
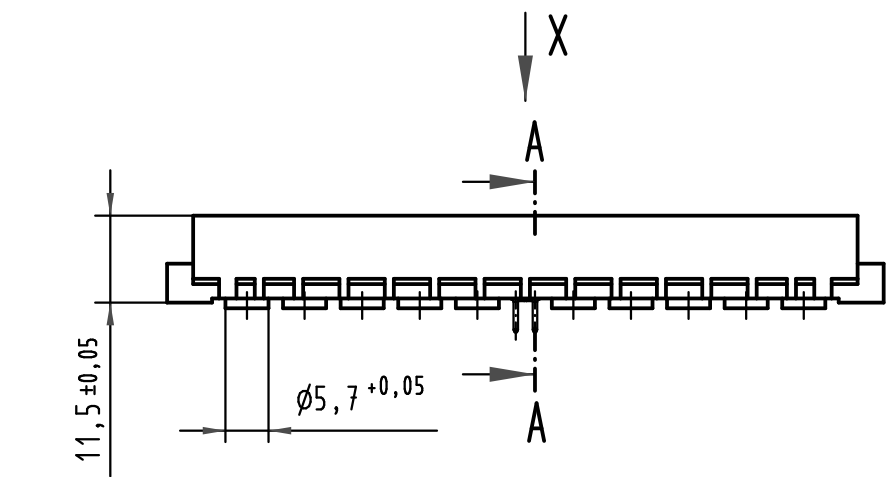
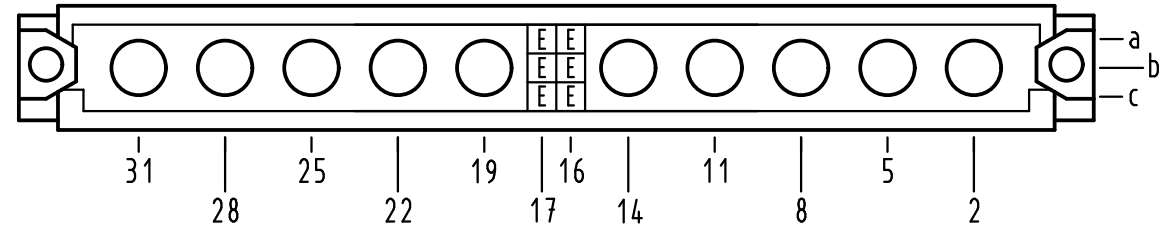
Alle Rechte vorbehalten/ All rights reserved



**A-A (2:1)**



**X Kontaktbelegung  
contact loading**



2 Lochdurchmesser ist auf den jeweiligen Kontakt abzustimmen  
hole diameter is to be coordinated with the respective contact

1 weitere Informationen siehe: DS 09 73 110 00 02  
further information see: DS 09 73 110 00 02

09 73 106 6903	2
Bestell-Nr. part-no.	Anforderungsstufe performance level 1

All Dimensions in mm Original Size DIN A 3			Techn. Character.		
Mod.	Dat.	Name	Detail.	Dat.	Name
36054	15.06.10	Hage.	15.04.10	15.04.10	Hage.
36028					mte
			Stand.		
HARTING Electronics GmbH & Co. KG D-32339 ESPELKAMP			Maßstab/Scale 1:1		

Nicht tolerierte Maßel/Free size tolerances IEC 60603-2	
<b>type M inverse 6+10</b> Messerleiste Einlöt 4,0 male connector solder 4,0	
TB 09 73 106 x903	Blatt/ page
Sub.	