

# board layout (3:1)

(69,3)

26 x 2,25 (=58,5)

2 x 1,5 (=3)

2 x  $\varnothing 0,05$  M1 L1

$\varnothing 2,4 \pm 0,1$

M1

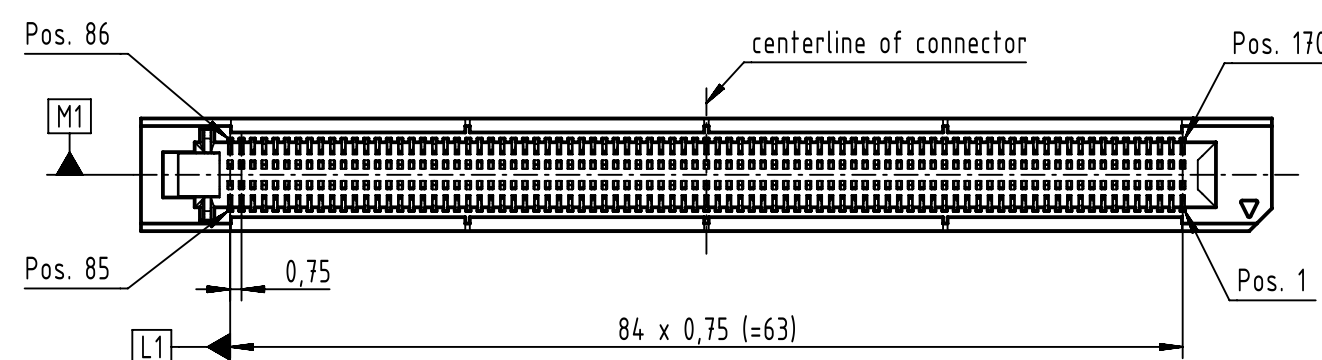
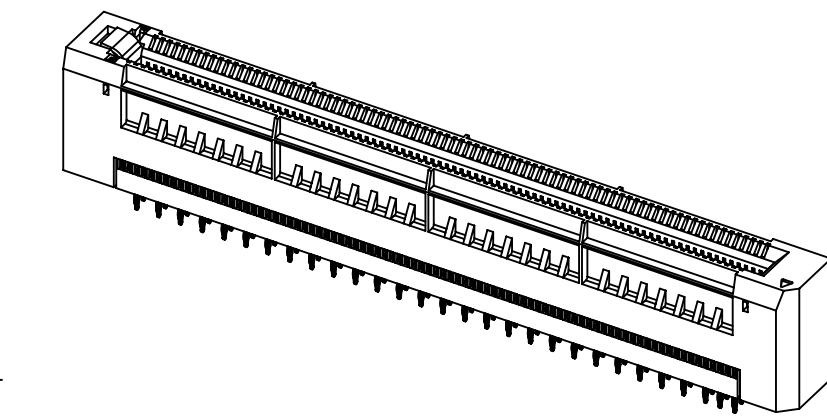
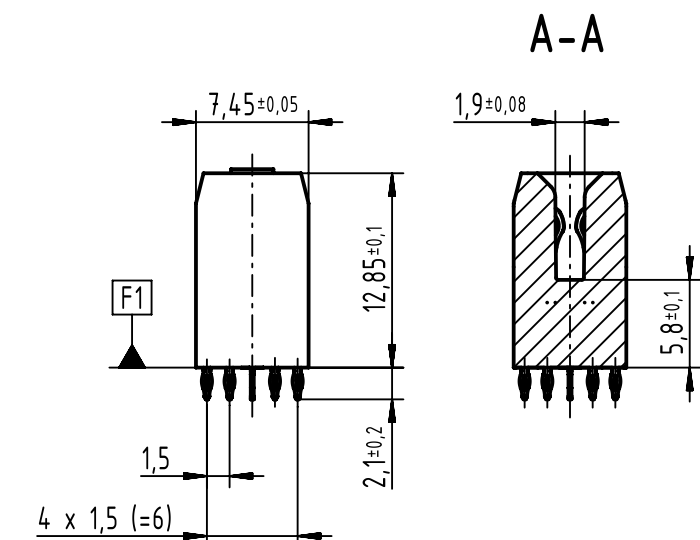
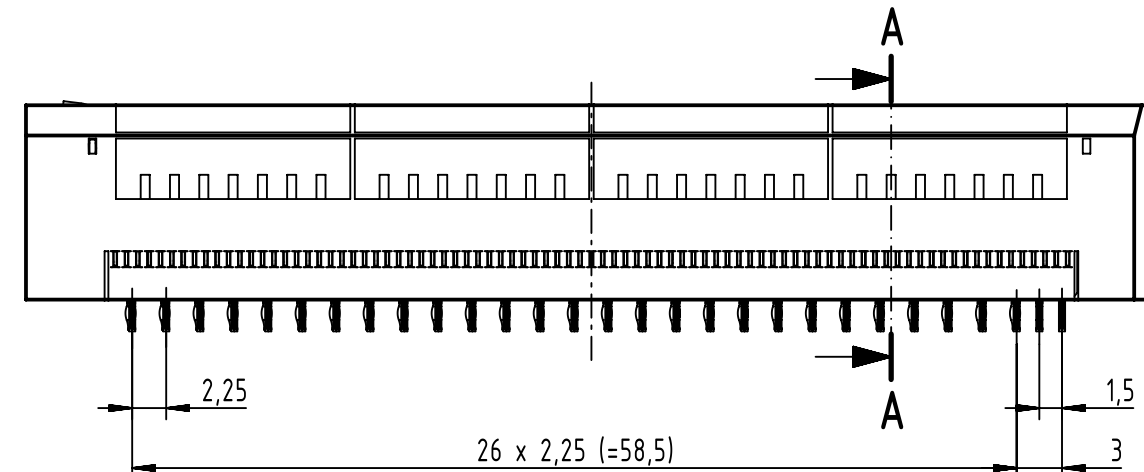
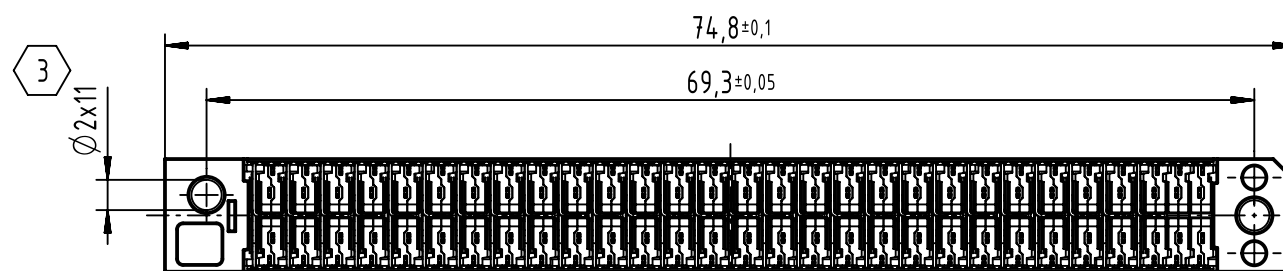
row for ground

31,225

centerline of card slot

housing contour

- 1 recommended drill hole  $\varnothing 0.64 \pm 0.01$ mm  
(acc. to IEC 60352-5)  
through hole dia. (after plating):  $\varnothing 0.55 \pm 0.05$
- 2 fixing-hole optional  
non-metallized drillings
- 3 use self-tapping screws for plastics  
2.2 x length,  
e.g. HARTING part number: 09060019974  
(length = pcb thickness + 6.5mm to 10mm)



missing dimensions and information acc. to PICMG MicroTCA.0  
(Micro Telecommunications Computing Architecture Base Specification)



All Dimensions in mm Original Size DIN A3		Scale 2:1	Free size tol.		Ref.	
					Sub.	
	All rights reserved		Created by HASSE	Inspected by LUETTERMANND	Standardisation HOFFMANN	Date 2016-07-20
	Department EC PD - DE		Title AdvancedMC for pTCA rev. 3 press-fit		State Final Release	
HARTING Electronics GmbH D-32339 Espelkamp		Type TB	Number 16111705202000		Doc-Key / ECM-Nr. 100179135/UGD/010/B 500000106720	
					Rev. B	Page 1/1