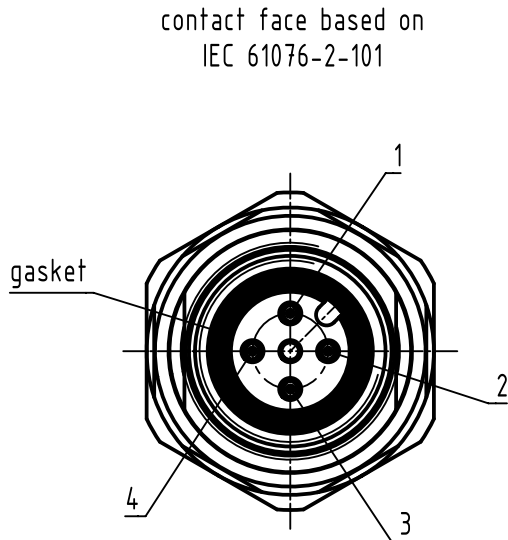
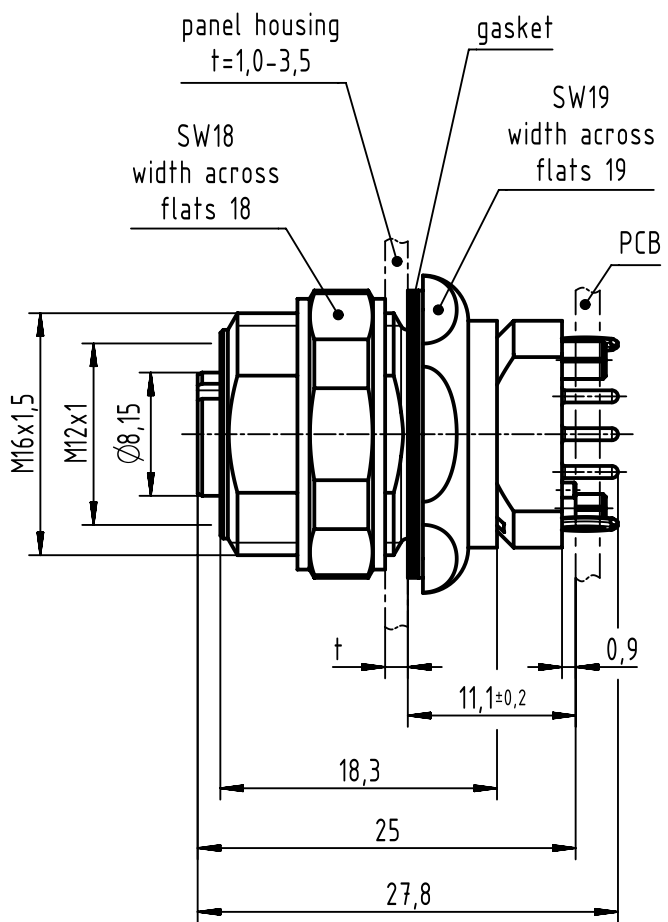
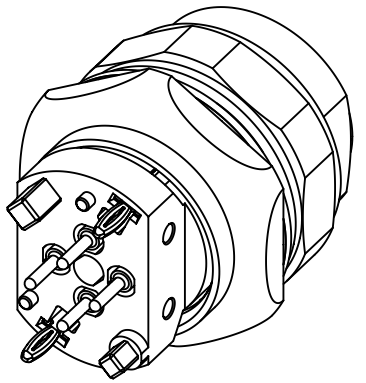
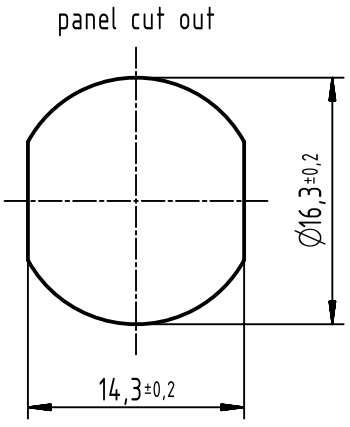
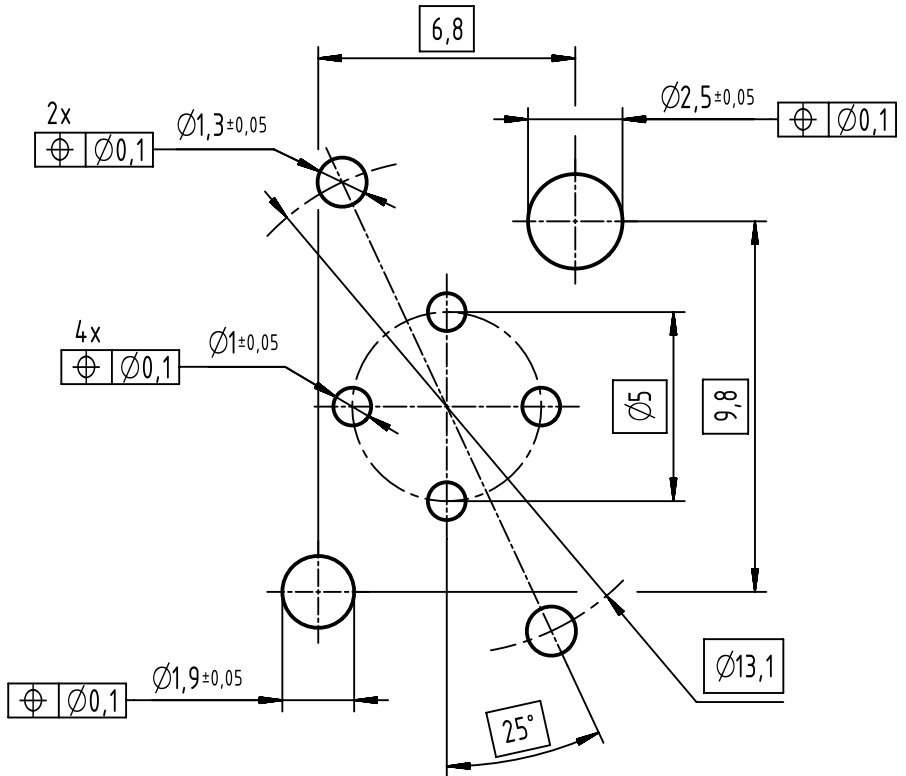




X



X (5:1)
recommended PCB-layout



- 1 pcs. single package

		All Dimensions in mm Original Size DIN A3		Scale 2:1	Free size tol.	Ref.		
						Sub.		
	All rights reserved		Created by BUSSMANN	Inspected by HARLASS	Standardisation HOFFMANN	Date 2014-11-07	State Final Release	
	Department EC PD - DE		Title HARTING M12 PCB receptacle female A-coded 4-pole back				Doc-Key / ECM-Nr. 100584223/UGD/000/B 50000081540	
HARTING Electronics GmbH D-32339 Espelkamp								
		Type TB	Number 21033212430				Rev. B	Page 1/1