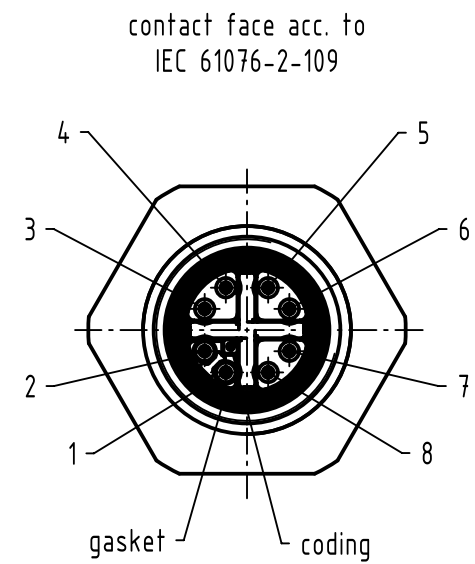
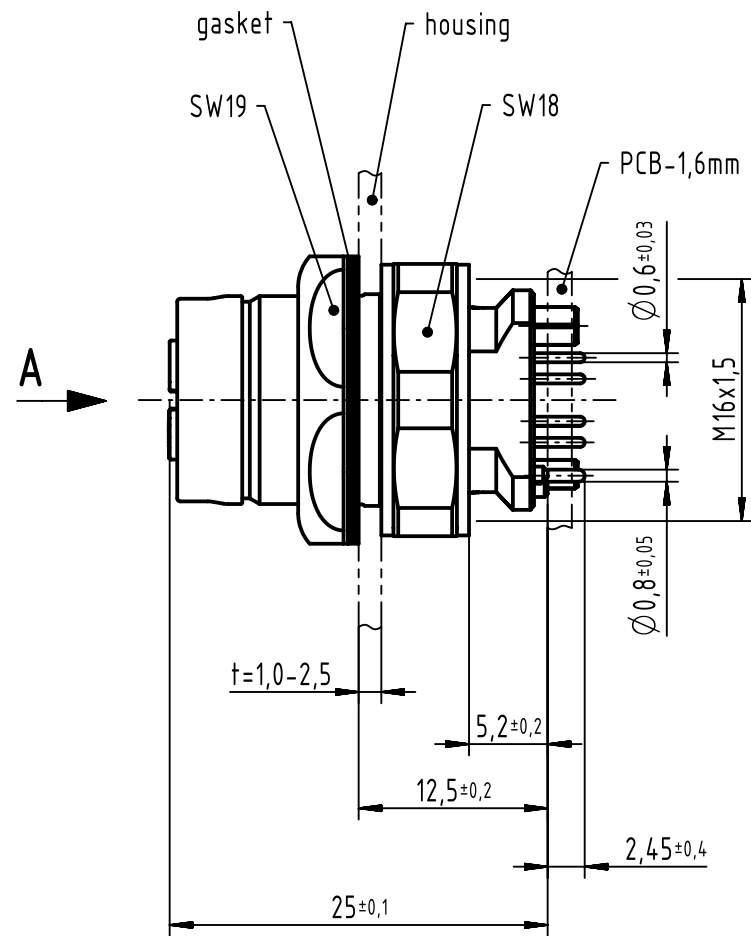
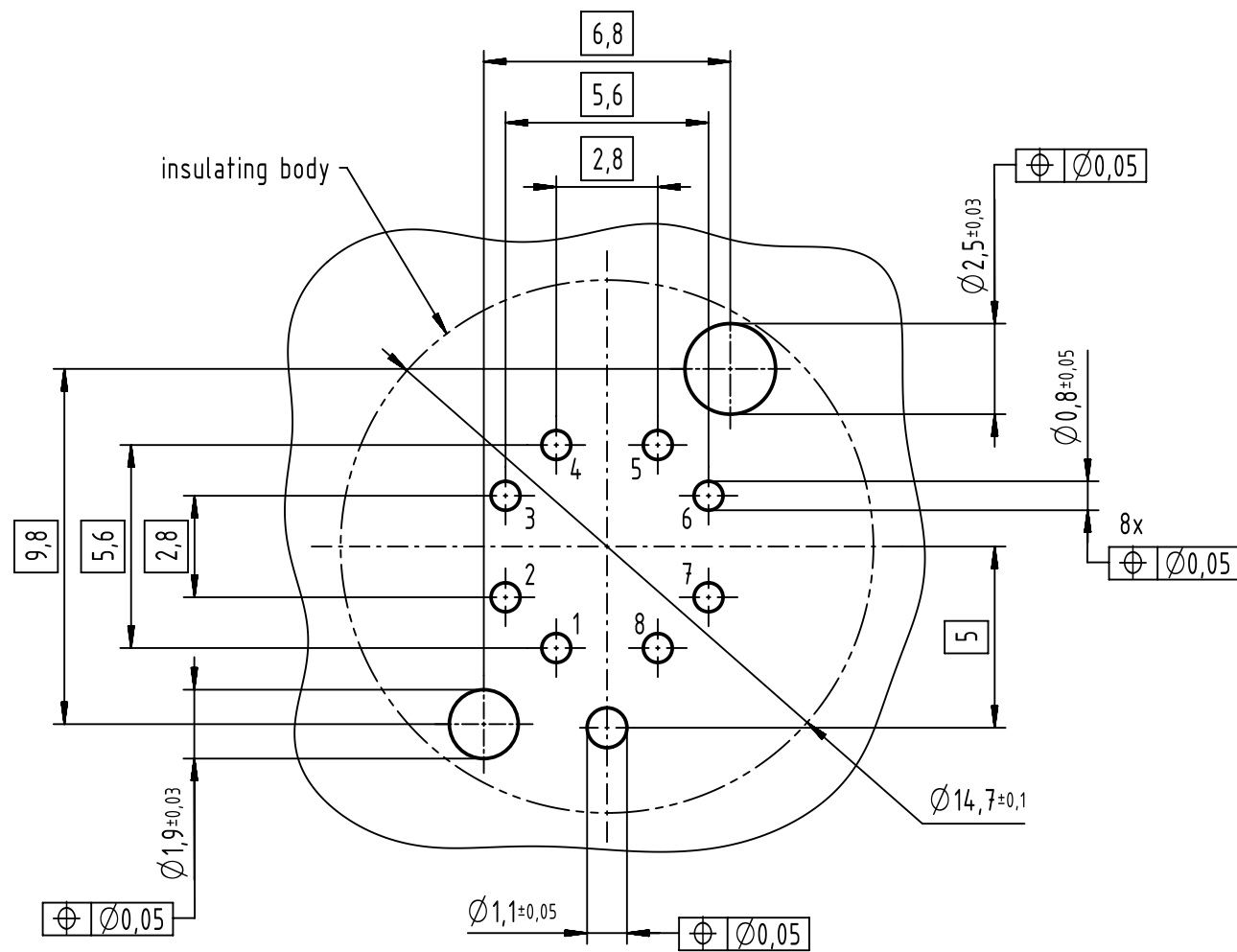
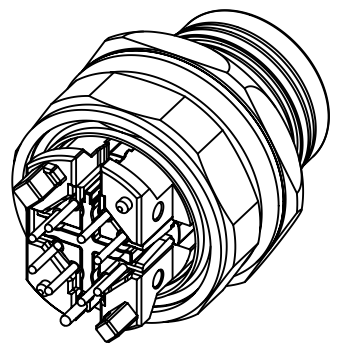
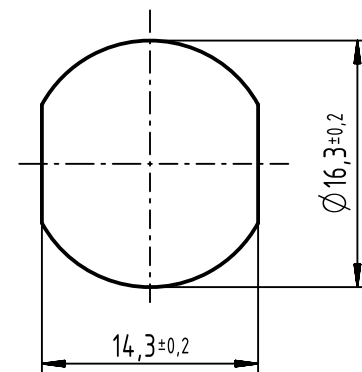


A (5:1)
recommended PCB-layout





panel cut out



pin assignment		
pin	Signal	pair
1	TD1+	2
2	RD1-	2
3	TD2+	3
4	RD2-	3
5	TD4+	4
6	RD4-	4
7	RD3-	1
8	TD3+	1

- 500 mating cycles acc. to IEC 60512-9-1
- design for reflow soldering
- 60 pcs. tray package

		All Dimensions in mm		Scale		Free size tol.		Ref.			
		Original Size DIN A3		2:1				Sub.			
		All rights reserved		Created by		Inspected by		Date		State	
		Department EC PD - DE		DYCKC		HARLASS		2017-08-31		Final Release	
HARTING Electronics GmbH D-32339 Espelkamp		Title								Doc-Key / ECM-Nr.	
		har-speed M12 PCB Cat6A receptacle straight front								100230885/UGD/002/F 500000119651	
		Type		TB		Number		21033812802		Rev. F	
										Page 1/1	