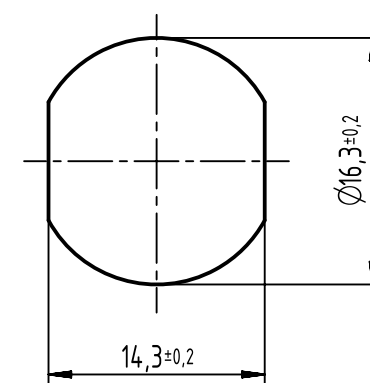
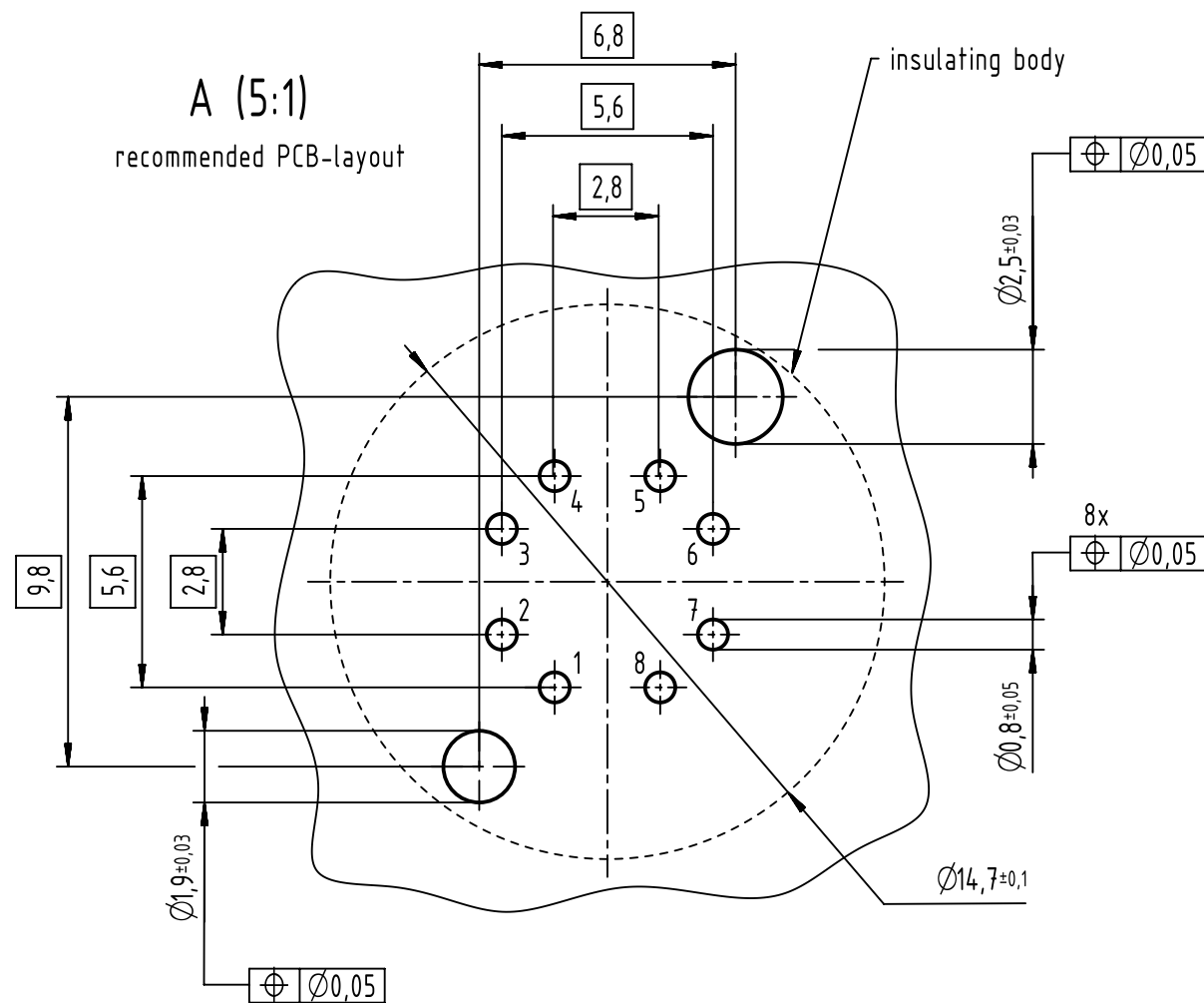


panel cut out

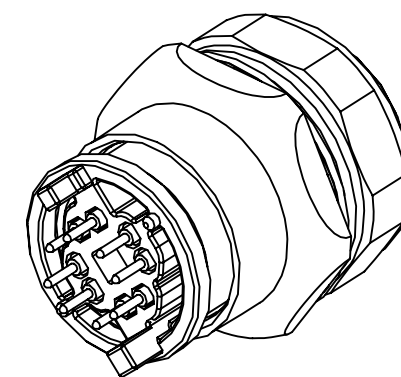




A (5:1)
recommended PCB-layout



- 500 mating cycles acc. to DIN EN 60512-9-1
- design for reflow soldering
- 60 pcs. tray package

pin assignment		
pin	Signal	pair
1	TD1+	2
2	RD1-	2
3	TD2+	3
4	RD2-	3
5	TD4+	4
6	RD4-	4
7	RD3-	1
8	TD3+	1



		All Dimensions in mm Original Size DIN A3		Scale 2:1		Free size tol.		Ref.							
								Sub.							
		All rights reserved		Created by DYCKC		Inspected by HARLASS		Standardisation KOHLER		Date 2017-08-31		State Final Release			
		Department EC PD - DE													
				Title		har-speed M12 PCB Cat5 receptacle straight rear						Doc-Key / ECM-Nr. 100230893/UGD/001/F 500000119651			
				Type TB		Number 21033812805						Rev. F		Page 1/1	
HARTING Electronics GmbH															
D-32339 Espelkamp															