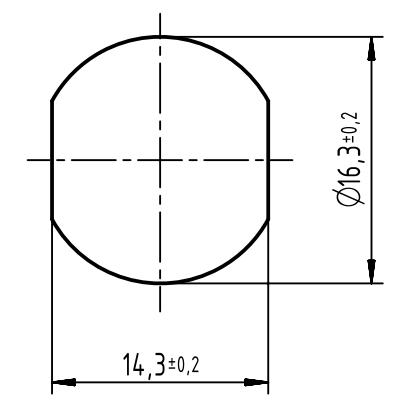
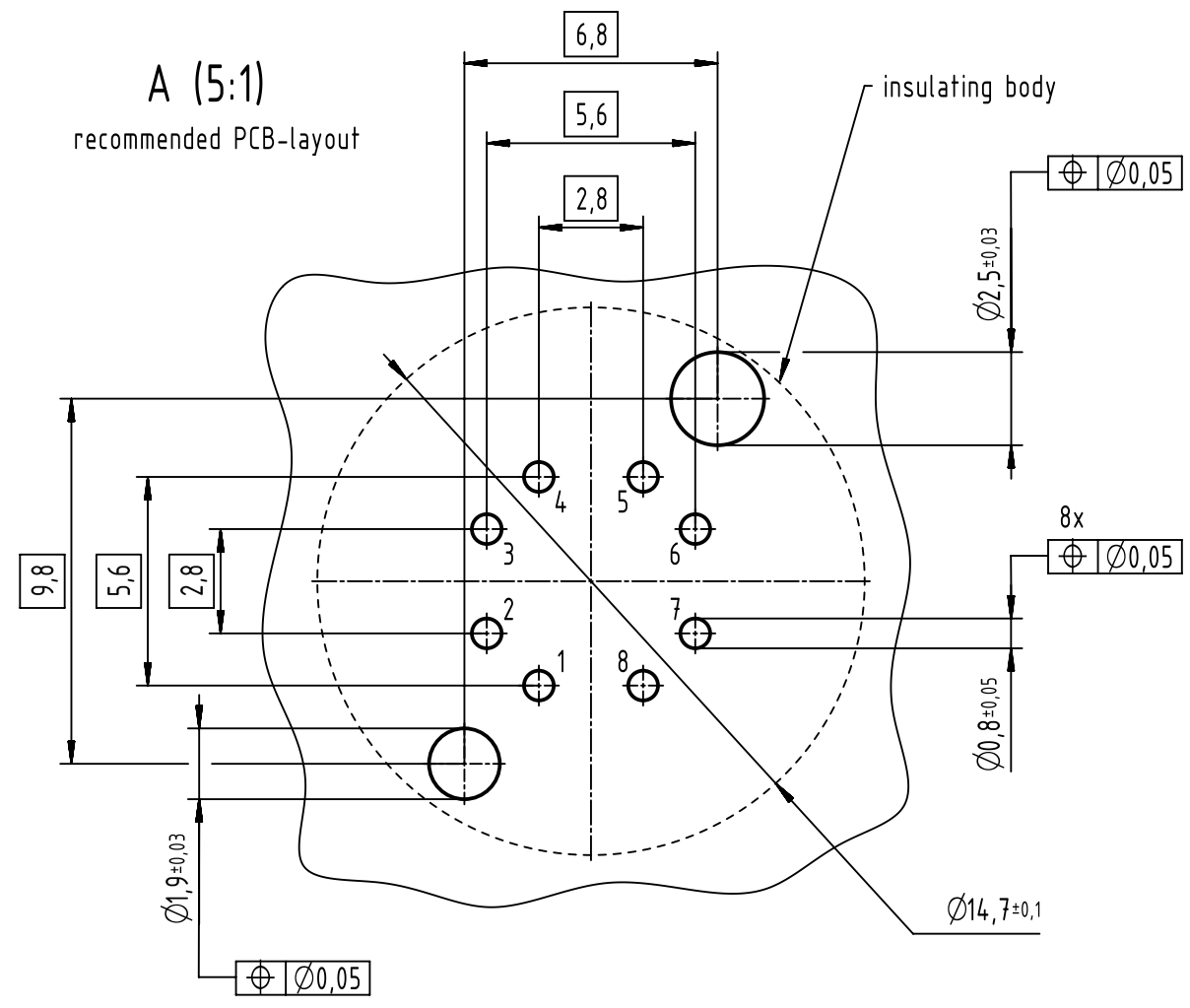


panel cut out

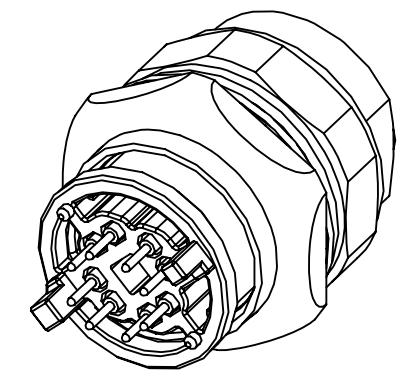


A (5:1)
recommended PCB-layout



- 500 mating cycles acc. to DIN EN 60512-9-1
- design for reflow soldering
- 60 pcs. tray package

pin assignment		
pin	Signal	pair
1	TD1+	2
2	RD1-	2
3	TD2+	3
4	RD2-	3
5	TD4+	4
6	RD4-	4
7	RD3-	1
8	TD3+	1



	All rights reserved Department EC PD - DE HARTING Electronics GmbH D-32339 Espelkamp	All Dimensions in mm Original Size DIN A3	Scale 2:1	Free size tol.	Ref. Sub.
		Created by DYCKC	Inspected by HARLASS	Standardisation KOHLER	Date 2017-08-31
		Title har-speed M12 PCB Cat5 receptacle straight rear			Doc-Key / ECM-Nr. 100230329/UGD/001/F 500000119651
		Type TB	Number 21033812809		Rev. F Page 1/1