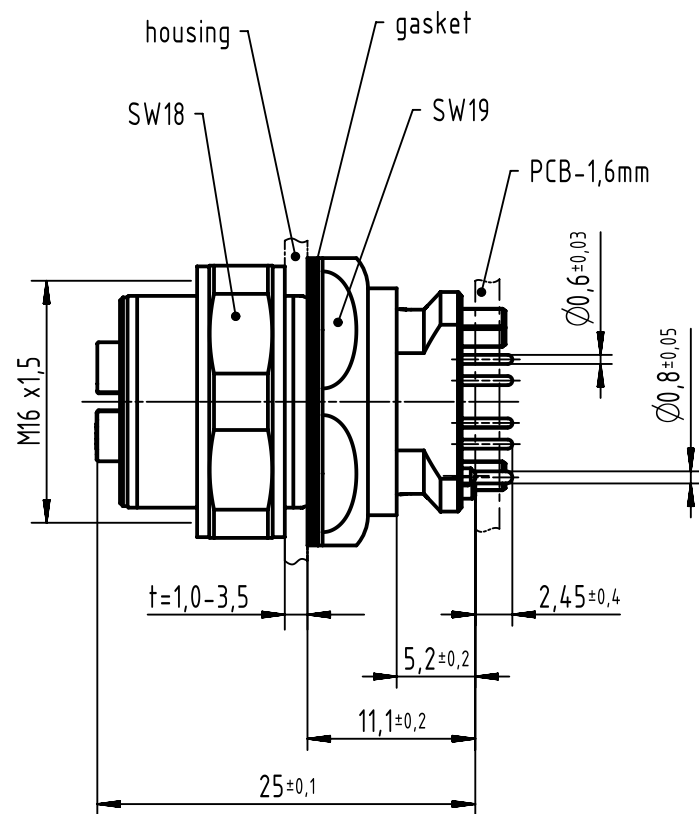
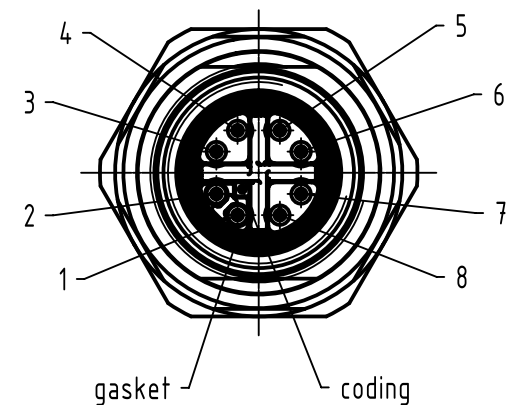


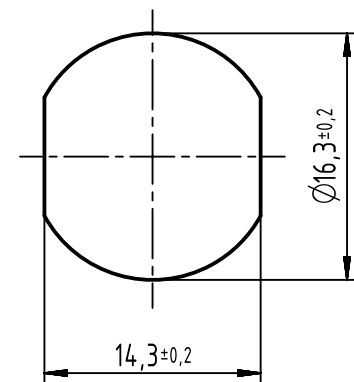
A →



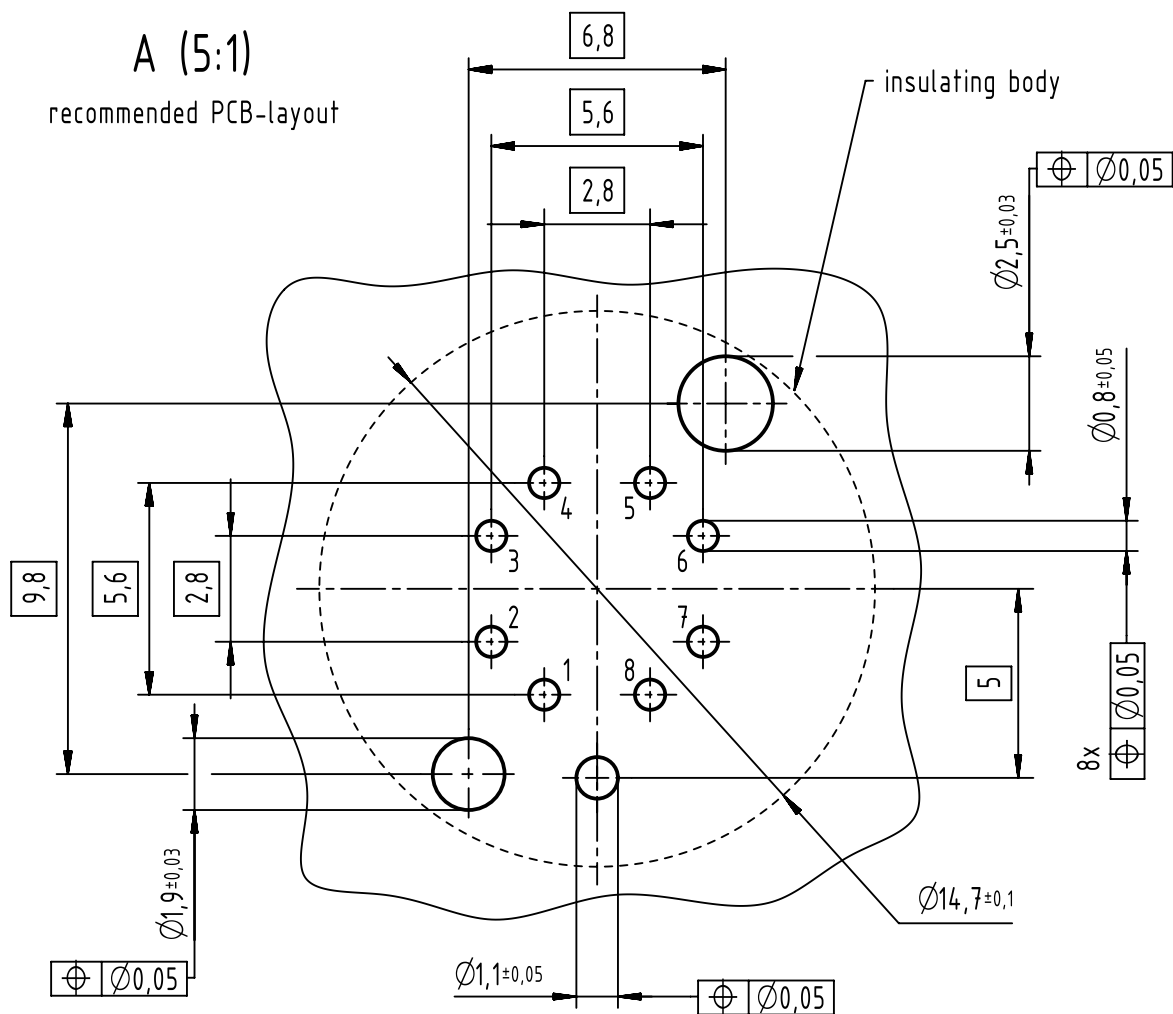
contact face acc. to
IEC 61076-2-109



panel cut out

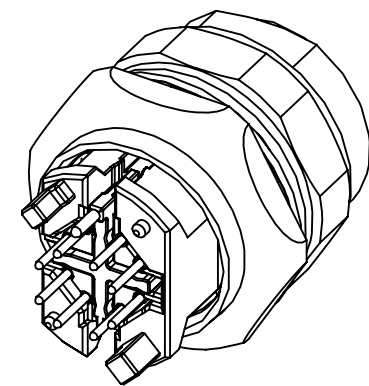


A (5:1)
recommended PCB-layout



- 500 mating cycles acc. to DIN EN 60512-9-1
- design for reflow soldering
- 60 pcs. tray package

pin assignment		
pin	Signal	pair
1	TD1+	2
2	RD1-	2
3	TD2+	3
4	RD2-	3
5	TD4+	4
6	RD4-	4
7	RD3-	1
8	TD3+	1



	All Dimensions in mm Original Size DIN A3		Scale 2:1	Free size tol.		Ref.	
	All rights reserved Department EC PD - DE		Created by DYCKC	Inspected by HARLASS	Standardisation KOHLE	Date 2017-08-31	State Final Release
HARTING Electronics GmbH D-32339 Espelkamp		Title har-speed M12 PCB Cat6A receptacle straight rear				Doc-Key / ECM-Nr. 100232902/UGD/003/E 500000119651	
		Type TB	Number 21033812810			Rev. E	Page 1/1