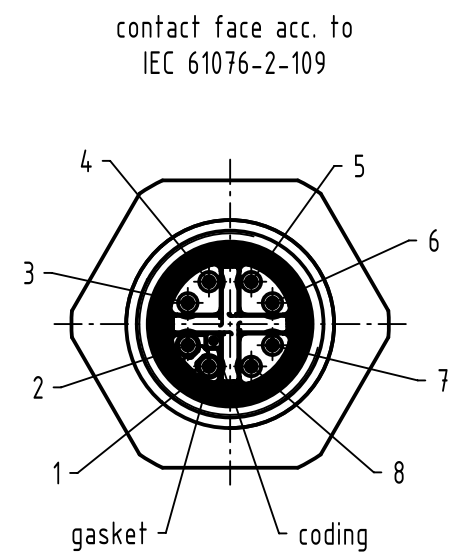
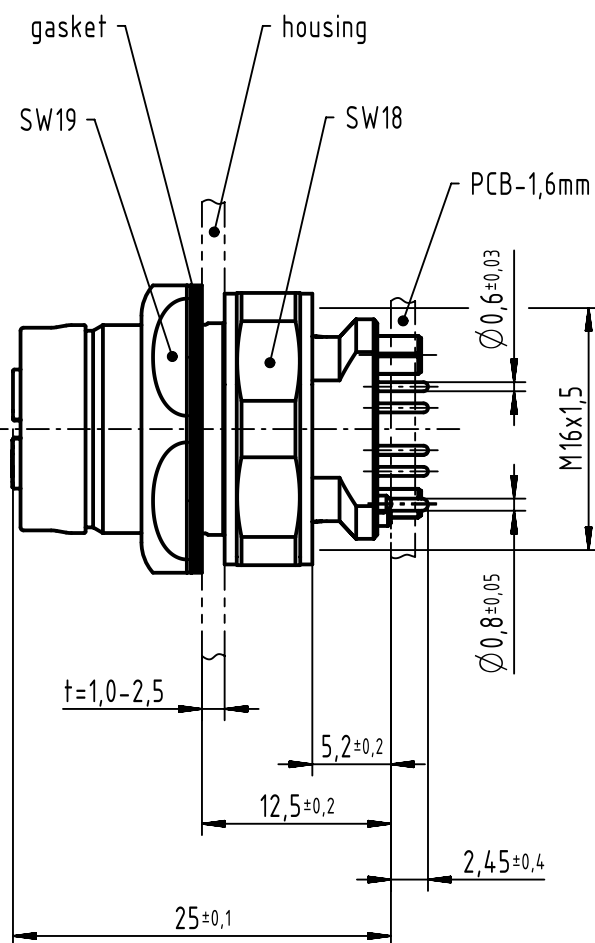
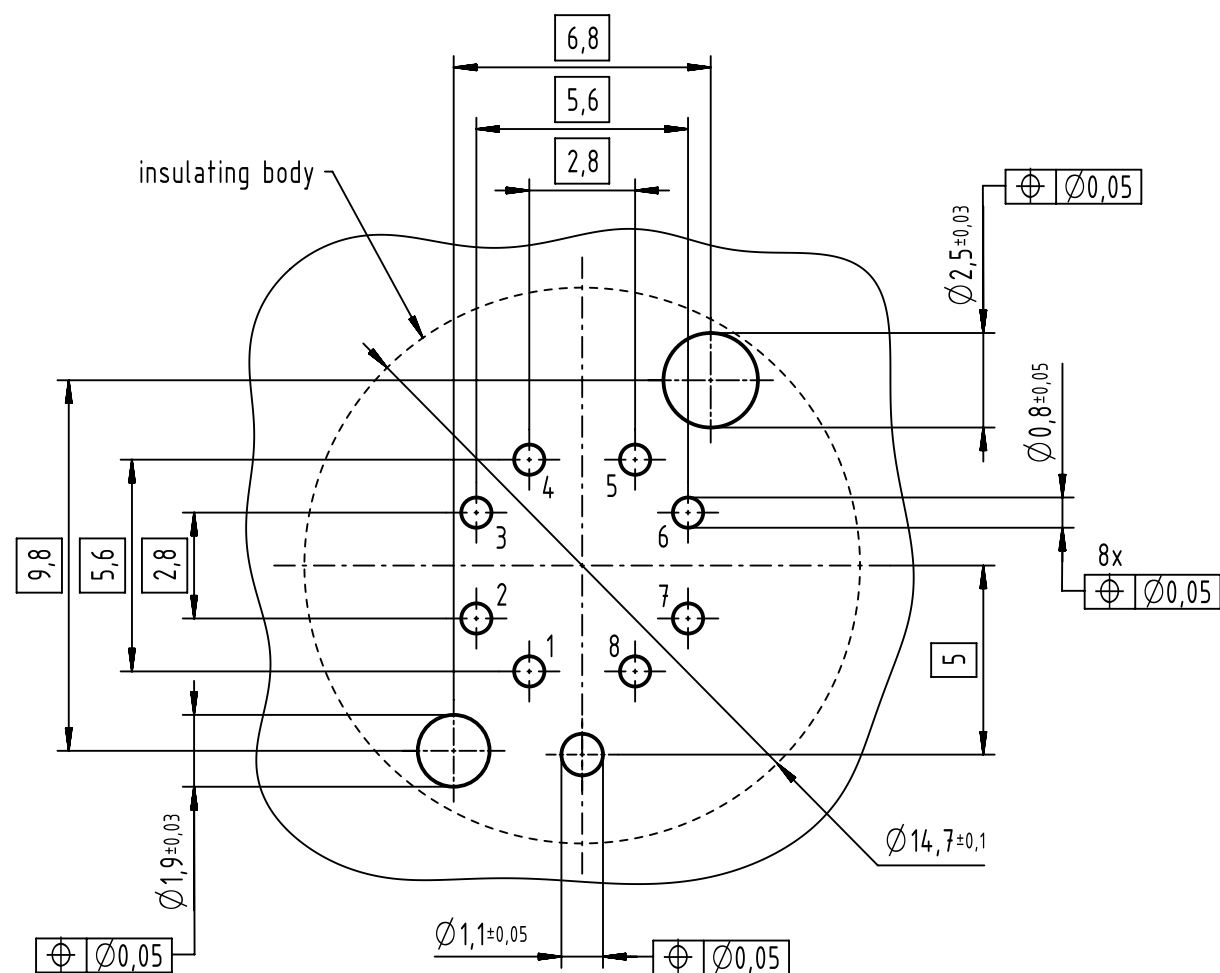
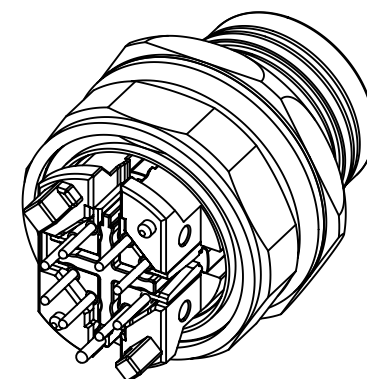
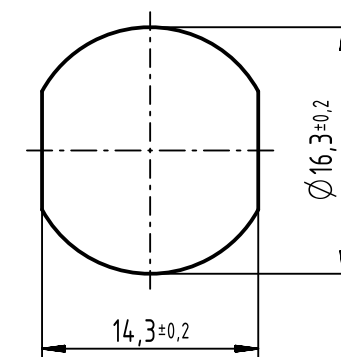


**A (5:1)**  
recommended PCB-layout





panel cut out



pin assignment		
pin	Signal	pair
1	TD1+	2
2	RD1-	2
3	TD2+	3
4	RD2-	3
5	TD4+	4
6	RD4-	4
7	RD3-	1
8	TD3+	1

- 500 mating cycles acc. to IEC 60512-9-1
- design for reflow soldering
- 1 pcs. single package

		All Dimensions in mm Original Size DIN A3		Scale 2:1		Free size tol.		Ref.	
								Sub.	
		All rights reserved		Created by DYCKC		Inspected by HARLASS		Standardisation KOHLER	
		Department EC PD - DE				Date 2017-08-31		State Final Release	
HARTING Electronics GmbH D-32339 Espelkamp		Title har-speed M12 PCB Cat6A receptacle straight front							Doc-Key / ECM-Nr. 100230885/UGD/003/D 500000119651
		Type TB		Number 21033812813					Rev. D