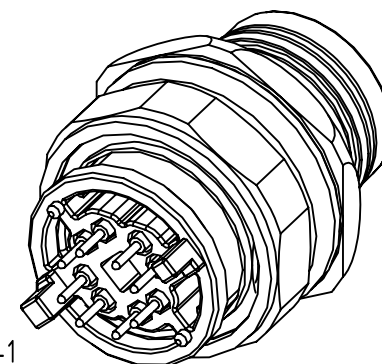
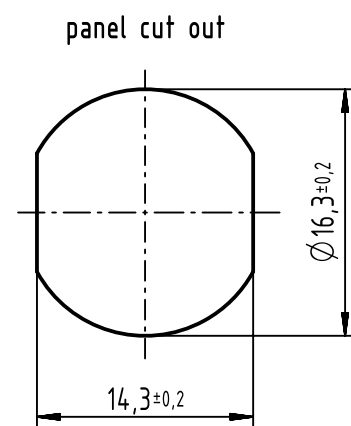
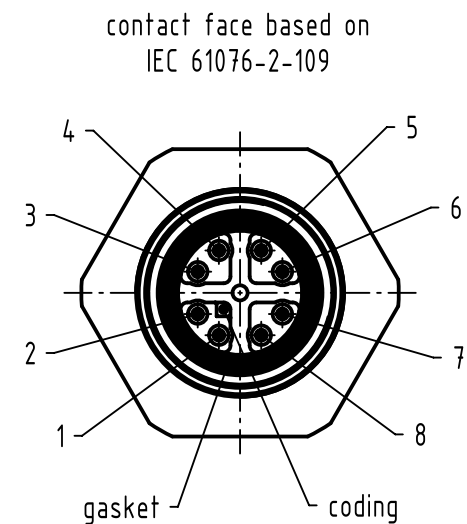
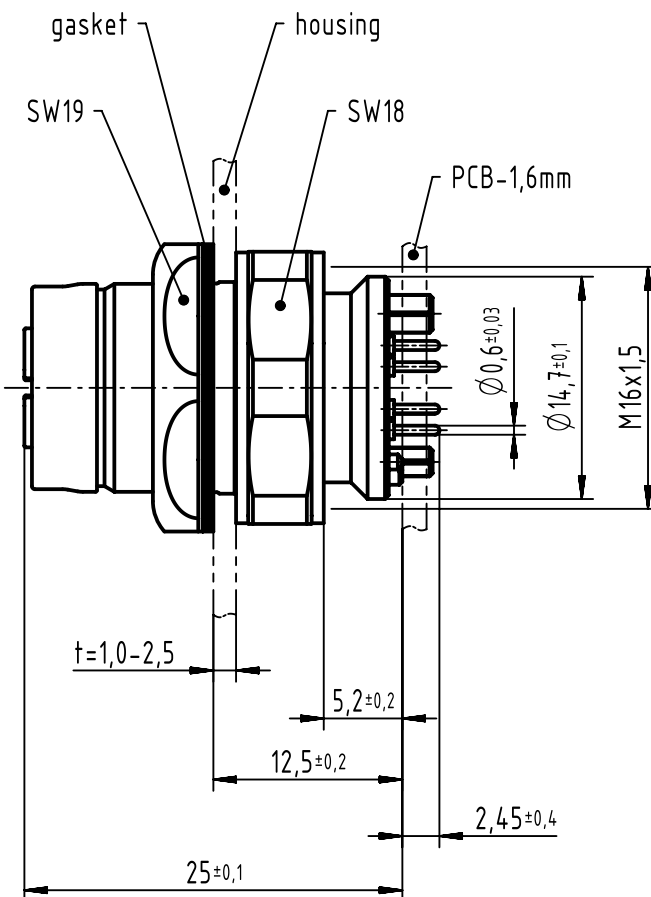
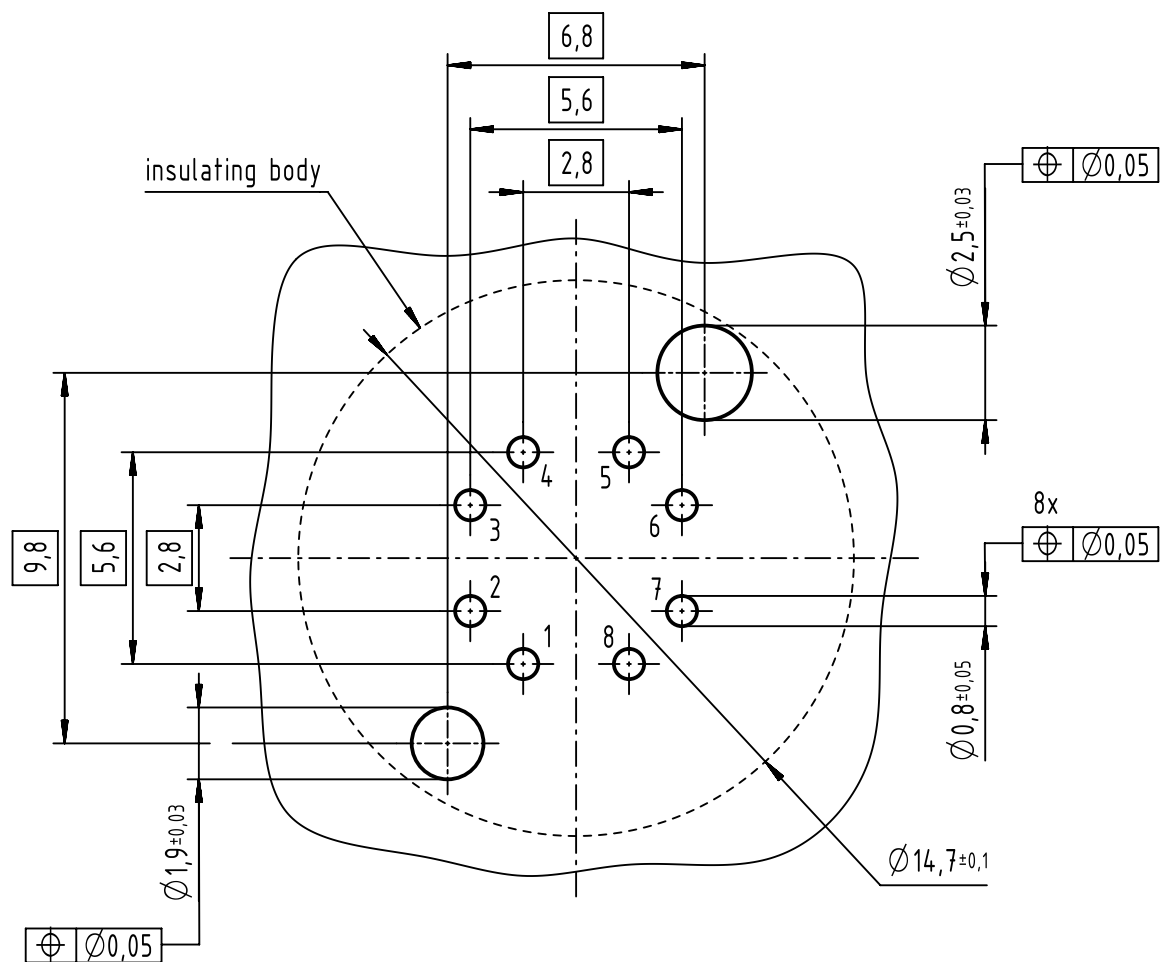


**A (5:1)**  
recommended PCB-layout



pin assignment		
pin	Signal	pair
1	TD1+	2
2	RD1-	2
3	TD2+	3
4	RD2-	3
5	TD4+	4
6	RD4-	4
7	RD3-	1
8	TD3+	1

- 500 mating cycles acc. to IEC 60512-9-1
- design for reflow soldering
- 1 pcs. single package

	All rights reserved		Scale 2:1	Free size tol.		Ref.	
	Department EC PD - DE					Sub.	
		Created by DYCKC		Inspected by HARLASS	Standardisation KOHLER	Date 2017-08-31	State Final Release
		Title har-speed M12 PCB Cat5 receptacle straight front		Type TB	Number 21033812814	Doc-Key / ECM-Nr. 100230900/UGD/001/D 500000119651	
HARTING Electronics GmbH						Rev. D	Page 1/1
D-32339 Espelkamp							