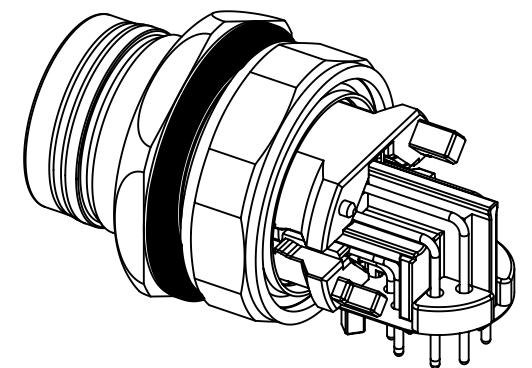
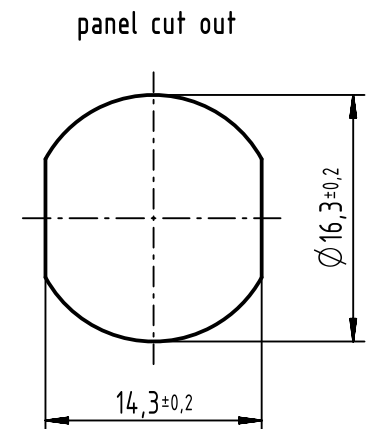
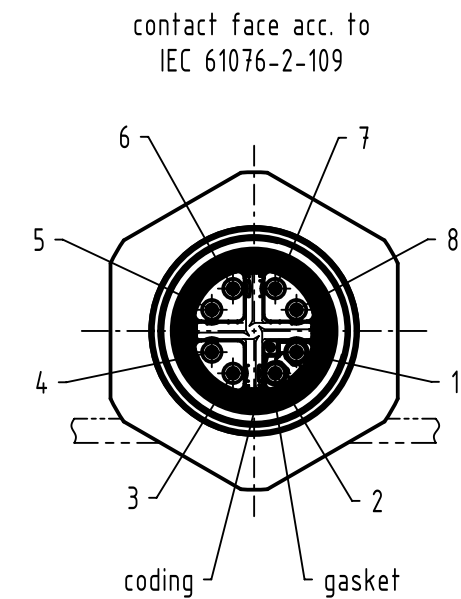
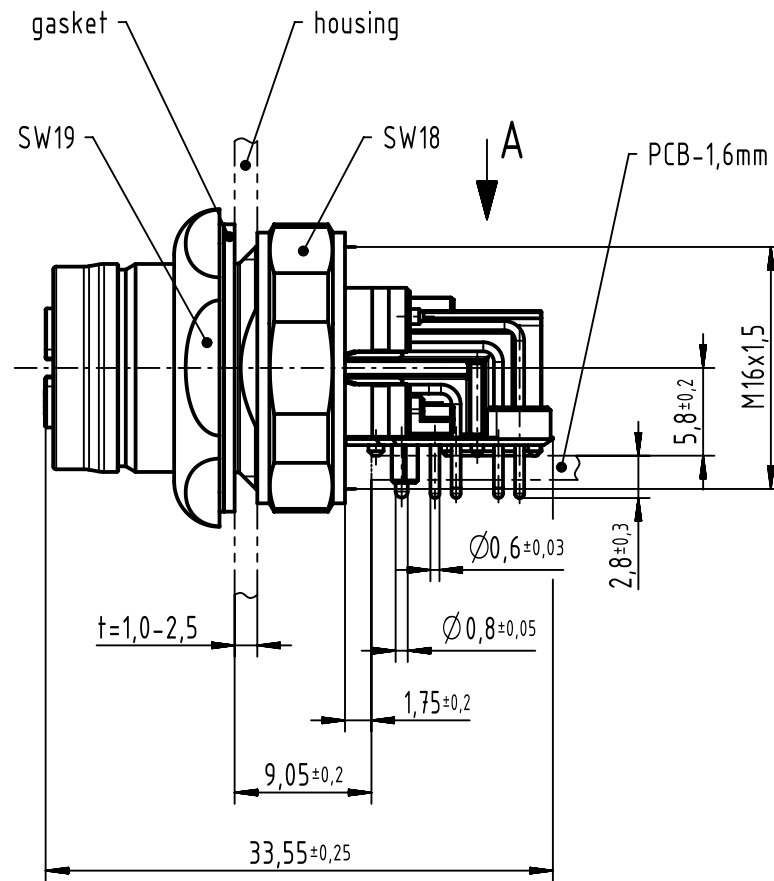
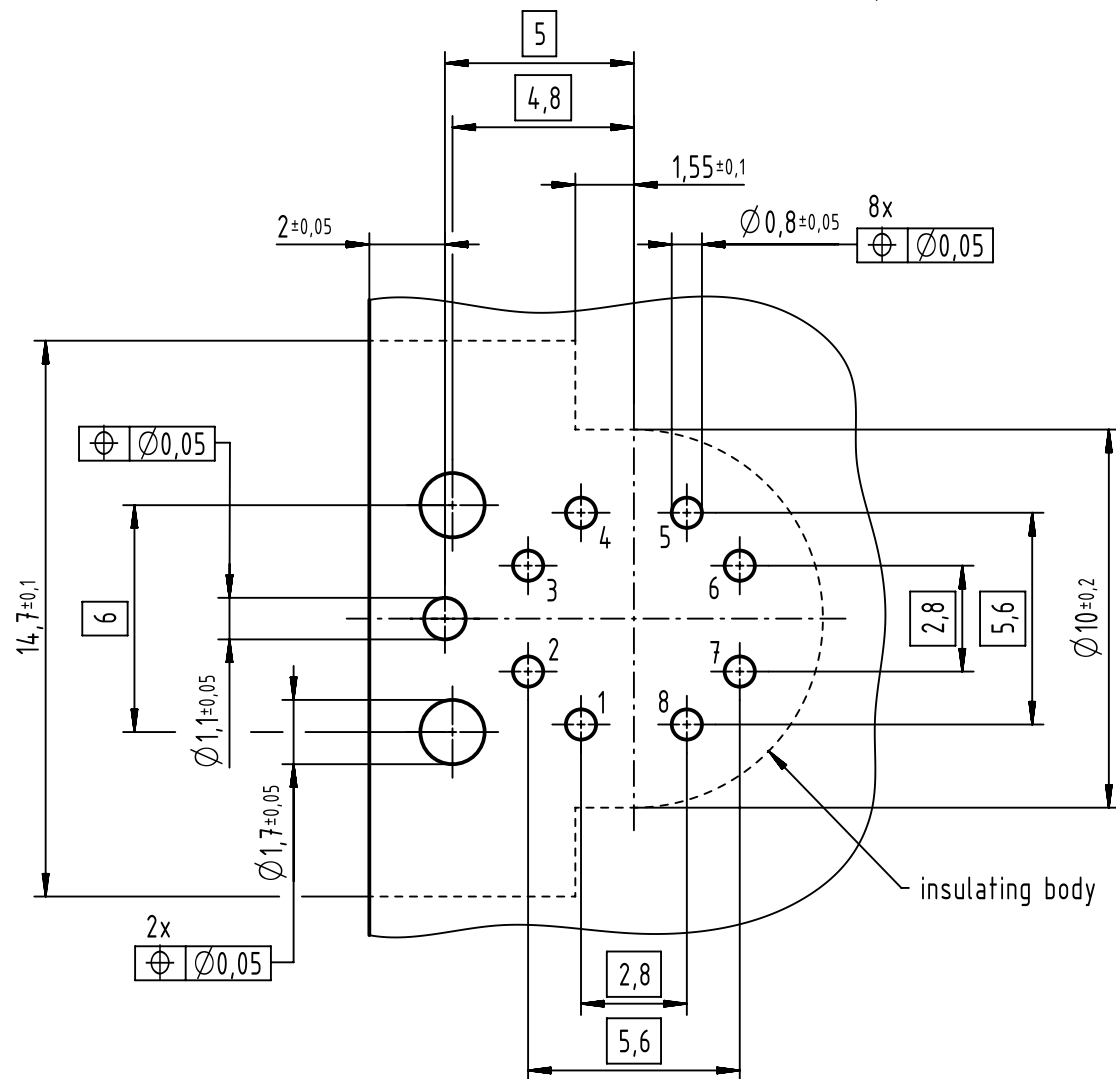




**A (5:1)**  
recommended PCB-layout



- 500 mating cycles acc. to IEC 60512-9-1
- design for reflow soldering
- 1 piece single package

pin assignment			
difference of contact length to pin 1	pin	signal	pair
0	1	TD1+	2
-2,8	2	RD1-	2
-2,8	3	TD2+	3
0	4	RD2-	3
+5,6	5	TD4+	4
+8,4	6	RD4-	4
+8,4	7	RD3-	1
+5,6	8	TD3+	1

	All Dimensions in mm Original Size DIN A3		Scale 2:1		Free size tol.		Ref.		
							Sub.		
	All rights reserved		Created by GRUBES	Inspected by HARLASS	Standardisation HOFFMANN	Date 2018-08-29		State Final Release	
	Department EL PD		Title har-speed M12 PCB Cat6A receptacle angled front					Doc-Key / ECM-Nr. 100230899/UGD/003/E 500000139311	
HARTING Electronics GmbH D-32339 Espelkamp			Type TB	Number 21033814810				Rev. E	Page 1/1