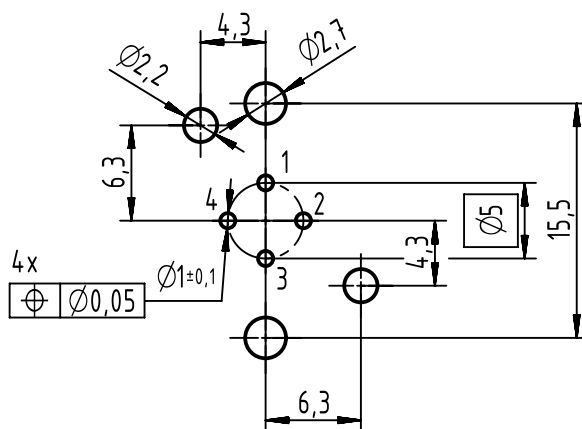
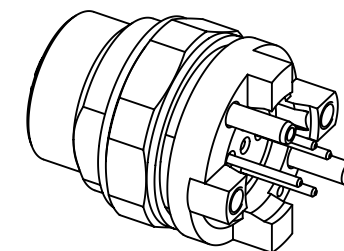
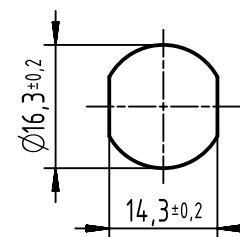


PCB layout





panel cut out  
(1:1)



1 top surface PCB

recommended PCB-thickness: 1.6mm

		All Dimensions in mm Original Size DIN A4		Scale 2:1		Free size tol.		Ref.					
								Sub. TB 21033816410 500000056709 2012-11-26					
		All rights reserved		Created by HASSE		Inspected by WELLMANN		Standardisation HOFFMANN		Date 2015-09-04		State Final Release	
		Department EC PD - DE											
HARTING Electronics GmbH D-32339 Espelkamp				Title		HARTING M12 PFT D-cod 4-pole female straight IP20						Doc-Key / ECM-Nr. 100196082/UGD/003/F 500000093268	
				Type TB		Number 21033816410						Rev. F	