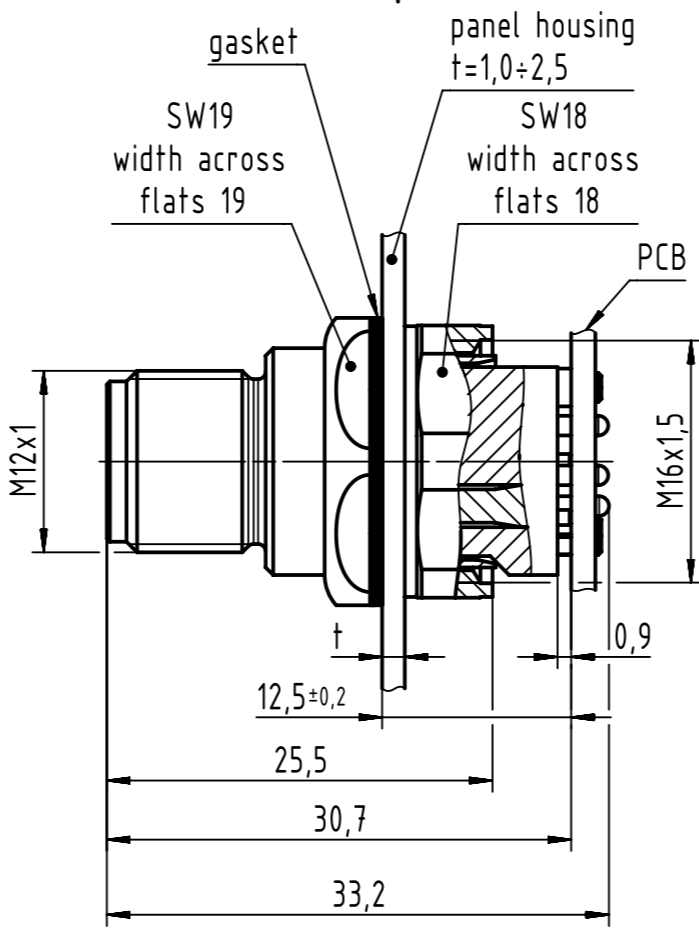
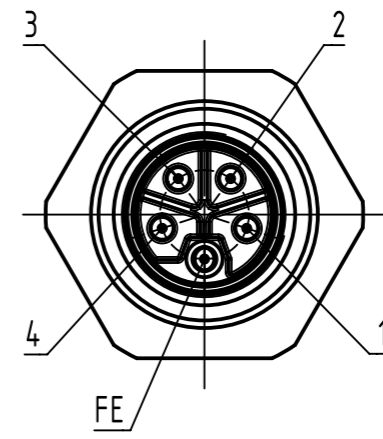


A →

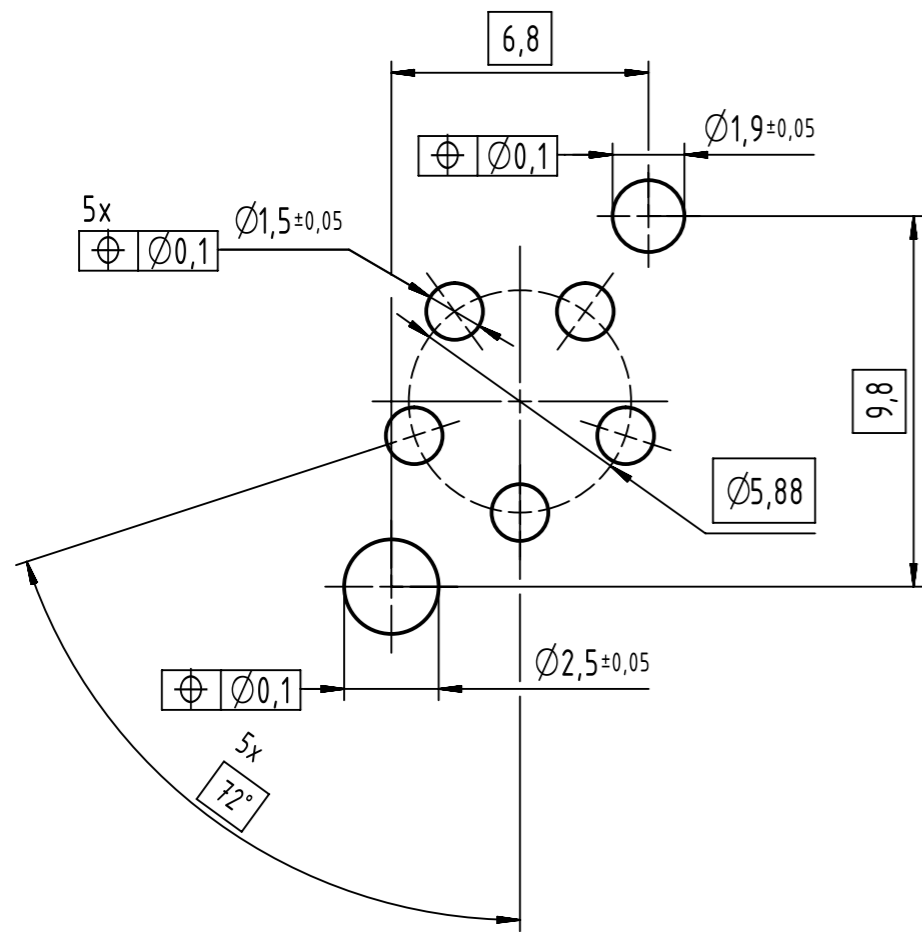


contact face based on  
IEC 61076-2-111



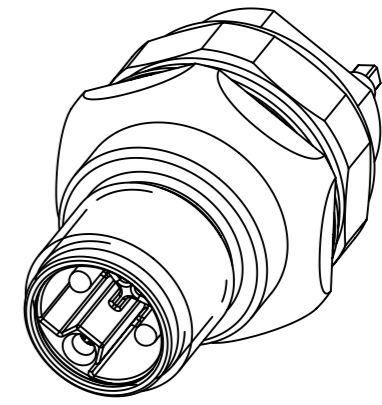
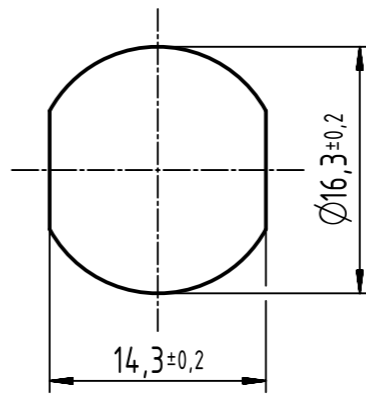
A (5:1)



recommended PCB-layout



(2:1)

panel cut out



		All Dimensions in mm Original Size DIN A3		Scale 2:1		Free size tol.		Ref.	
		All rights reserved		Created by BALSAN		Inspected by PRIESTER		Standardisation HOFFMANN	
		Department EC PD - RO				Date 2018-03-08		State Final Release	
HARTING Electronics GmbH D-32339 Espelkamp		Title M12 Power receptacle male L-coded front						Doc-Key / ECM-Nr. 100581425/UGD/000/D 500000132179	
		Type TB		Number 21033961531				Rev. D Page 1/1	