

Montagezubehör

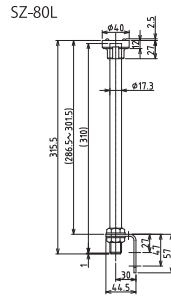
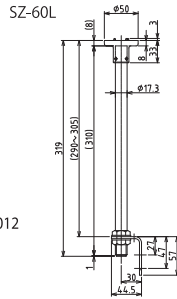
Montagerohr

φ 50 (φ 40)

SZ-60L
SZ-80L



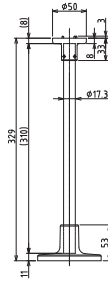
inklusive SZ-012



SZ-60T

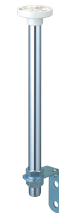


inklusive SZ-011

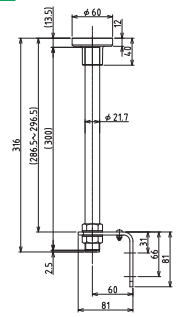


φ 60

SZ-70L

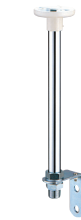


inklusive SZ-013

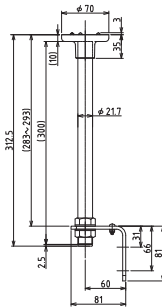


φ 70

SZ-50L



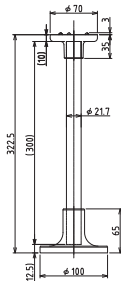
inklusive SZ-013



SZ-50T



inklusive SZ-010

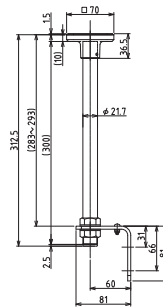


□ 70

SZ-40L



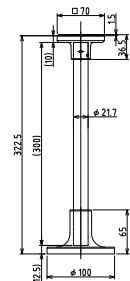
inklusive SZ-013



SZ-40T



inklusive SZ-010



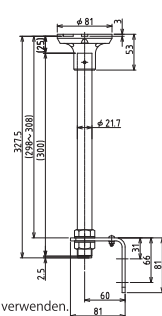
φ 81

SZ-30L



inklusive SZ-013

Keine Gummidichtung verwenden.

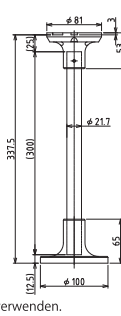


SZ-30T



inklusive SZ-010

Keine Gummidichtung verwenden.



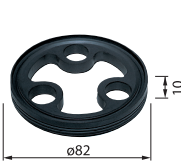
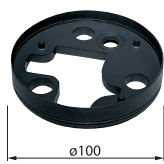
Modell	Material					
	Obere Halterung	Säule	L-Halterung	Kabel-durchführung	Montage-halterung	Kompatibles Modell
SZ-80L	ABS-Kunststoff	Karbon-stahlrohr	SPHC	6/6 Nylon	—	LCE-W
SZ-60L	ADC12		SPHC	6/6 Nylon	—	LE-W LES-AW
SZ-60T	—	—	—	—	ADC12	—
SZ-70L	ABS-Kunststoff	Karbon-stahlrohr	SPHC	EPT	—	LME-W
SZ-50L	ADC12		SPHC	EPT	—	LU7 LHE-A
SZ-50T	—	—	—	—	ADC12	—
SZ-40L	ADC12	Karbon-stahlrohr	SPHC	EPT	—	KUS
SZ-40T	—		—	—	—	ADC12
SZ-30L	ABS-Kunststoff	Karbon-stahlrohr	SPHC	EPT	—	RLE,RU RH,PS PES
SZ-30T	—		—	—	—	ADC12

ADC12... Guss aus Aluminiumlegierung SPHC... warmgewaltes unlegiertes Stahlblech
EPT... Ethylen-Propylen-Gummi

Gummidichtung

SZ-200A

SZ-210

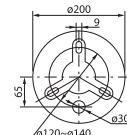


Modell	Material	Kompatibles Modell
SZ-200A	Ethylen-Propylen-Gummi	KX, RH(B)
SZ-210		RU, RLE, PS(F), PSX, PES

Stativ



SZ-009

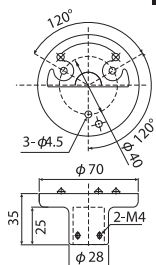


Modell	Größe ø	Höhe
SZ-009	Lochkreisdurch-messer ø120~ø140	1285~2285mm

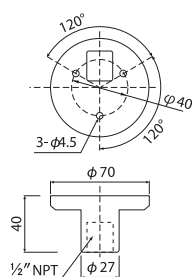
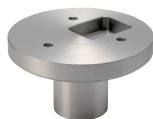
Obere Halterung für LU7



(For $\varnothing 1.7$ mm Säule)

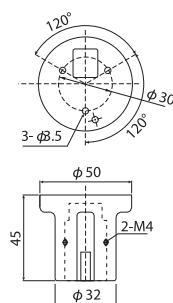


SZ-50NPT
(For 1/2" NPT Säule)

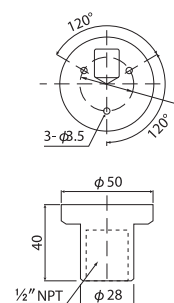


Obere Halterung für LU5

SZ-60-U
(For $\varnothing 1.7$ mm Säule)

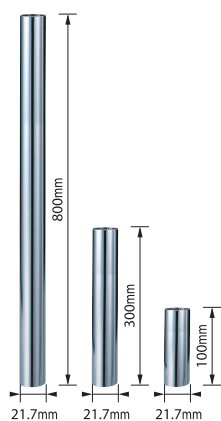


SZ-60NPT
(Für 1/2" NPT Säule)



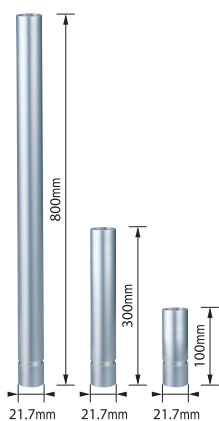
Säulen

Stahlsäule



800mm: POLE-800S21
300mm: POLE-300S21
100mm: POLE-100S21

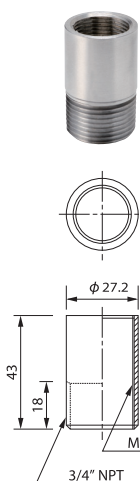
Aluminiumsäule



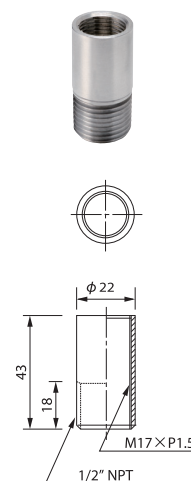
800mm: POLE-800A21
300mm: POLE-300A21
100mm: POLE-100A21

NPT Adapter

SZ-904

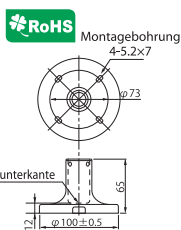


SZ-903

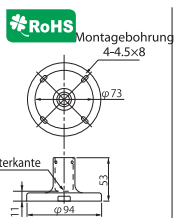


Montagehalter

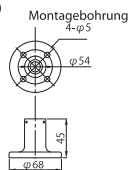
SZ-010
(Für $\varnothing 21.7$ mm Säule)



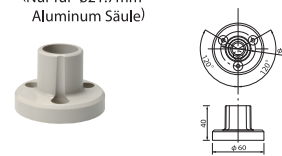
SZ-011
(Für $\varnothing 17.3$ mm Säule)



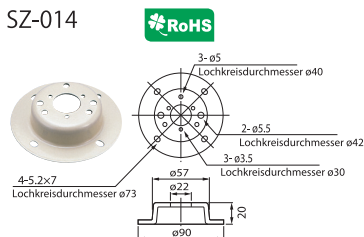
SZ-016A
(Für $\varnothing 21.7$ mm Säule)



SZ-70-B
(Nur für $\varnothing 21.7$ mm
Aluminum Säule)



SZ-014



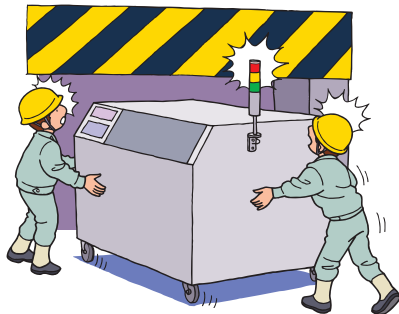
Modell	Material	Kompatibles Modell
SZ-010		STD, RUP, LME, LMS, LHE
SZ-011	Guss aus Aluminiumlegierung	LCE, LCS, LE, LES-A
SZ-016A		LUS, LU7, STD, RUP, LME, LMS, LHE
SZ-70-B		
SZ-014	Kaltgewalzter gefräster Stahl	LE, LES-A

Zubehör

Wandhalterung

- Die Halterung kann durch Lösen der Schraube und Trennen der Stecker von der Maschine abgenommen werden.
- Die Halterung kann zu Transportzwecken entfernt oder umgedreht montiert werden.
- Die Kabel dürfen nicht freiliegen.
- Silberne Ausführung: Als Sonderbestellung erhältlich.

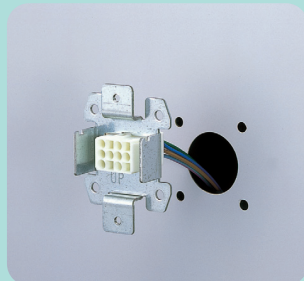
Vorher...



Nachher...



Montage



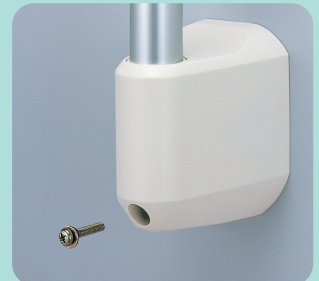
Eine Bohrung in der Montagefläche an der Maschine anbringen.



Ein Befestigungsteil und einen Stecker an der Bohrung anbringen.



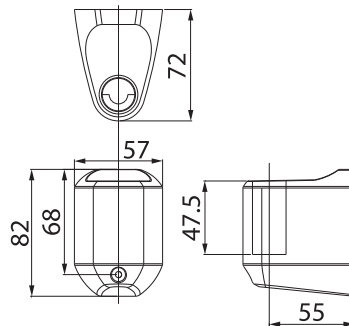
Die Stecker verbinden.



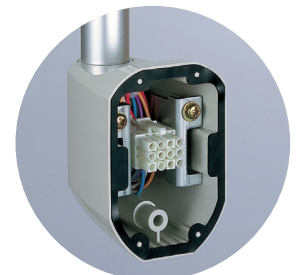
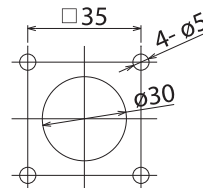
Die Halterung durch Anziehen der Schraube am Metallteil anbringen.

SZ-020 (Für $\varnothing 21.7\text{mm}$ Säule)

SZ-021 (Für $\varnothing 17.3\text{mm}$ Säule)

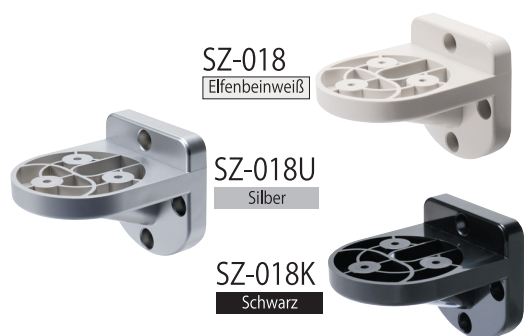


Montagemaße



Stecker
(SZ-020-001)
seperat erhältlich

Wandmontagehalterung



SZ-018

Elfenbeinweiß

SZ-018U

Silber

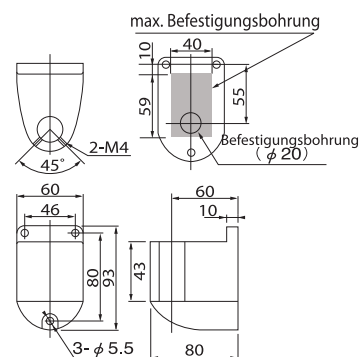
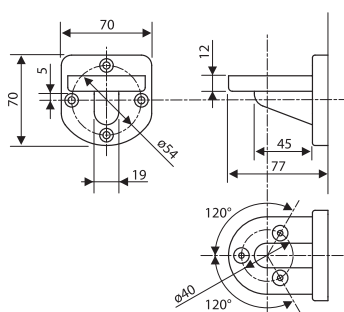
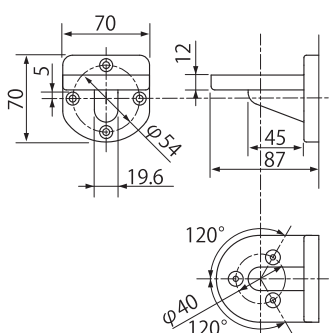
SZ-018K

Schwarz

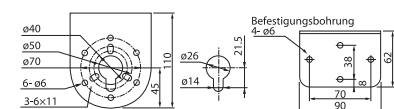
SZ-028

SZ-017

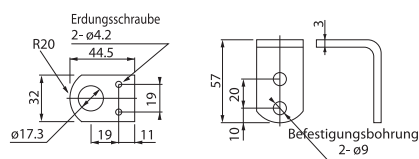
(Für ϕ 21.7mm Säule)



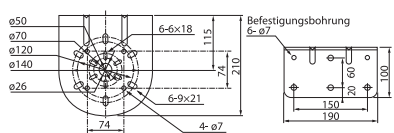
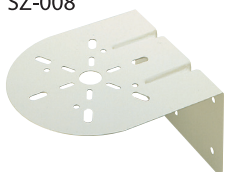
SZ-007



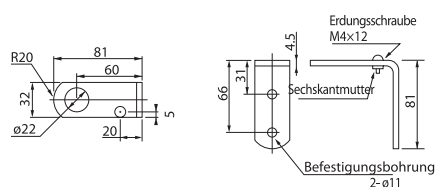
SZ-012
Ohne Säule



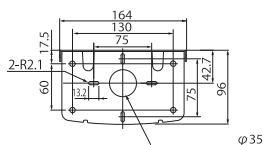
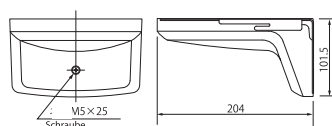
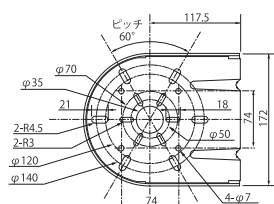
SZ-008



SZ-013
Ohne Säule














SZ-023



Modell	Material	Kompatibles Modell
SZ-017	Guss aus Aluminiumlegierung	LME, STD, RUP
SZ-018	PBT/ABS-Kunststoff	LU7, LHE
SZ-028	PBT/ABS-Kunststoff	LME
SZ-020	ABS-Kunststoff	LU5, LU7, LME, LMS, RUP, STD
SZ-021	ABS-Kunststoff	LC, LCS, LE, LES-A
SZ-007	Galvanisch verzinkter Stahl	LU7, LHE-A Lochkreis ϕ 50, 70
SZ-008	Galvanisch verzinkter Stahl	Lochkreis ϕ 50, 70, 120, 140 and 74 <input type="checkbox"/>
SZ-023	Halterung: Stahl Abdeckung: ABS-Kunststoff	Lochkreis ϕ 50, 70, 120, 140 and 74 <input type="checkbox"/>
SZ-012	Warmgewalzter Unlegierter Stahl	LCE, LCS, LE, LES
SZ-013	Warmgewalzter Unlegierter Stahl	LME, STP, ME, MP

Ersatzglühlampen

Modell	Glühlampen-nr.	Leistung	Artikel-Nr.
 RP35/BA15S	1	12V35W	D01203501-F1
	2	24V35W	D02403501-F1
 RP35/BA15D	5	48V35W	D04803502-F1
 G18/BA15S	8	6V3W	D00600303-F1
	9	12V10W	D01201003A-F1
	10	24V10W	D02401003A-F1
	11	48V10W	D04801003-F1
	12	12V5W	D01200503A-F1
 T20/E12	13	30V10W	D03001006A-F1
	14	110V10W	D11001006A-F1
	15	220V10W	D22001006A-F1
	16	110V15W	D11001506A-F1
	17	220V15W	D22001506A-F1
 G14/BA9S	18	12V6W	D01200604-F1
	19	24V6W	D02400604-F1
 T10/E10	22	110V3W	D11000307-F1
	23	110V5W	D11000507-F1
	24	220V3W	D22000307-F1
	27	12V0.11A	D012/1107-F1
	28	24V0.11A	D024/1107-F1
 RP35/BA15D	36	120V40W	D12004024-F1
	37	220V30W	D22003024-F1

Modell	Glühlampen-nr.	Leistung	Artikel-Nr.
 S25/BA15S	42	12V23W	D01202305-F1
	43	24V25W	D02402505-F1
 T10/BA15S	44	12V55W	D01205515-02-F1
	45	24V70W	D02407015-02-F1
 T20/E12	46	140V10W	D14001006-F1
 G18/BA15S	54	12V15W	D01201503-F1
	55	24V20W	D02402003-F1