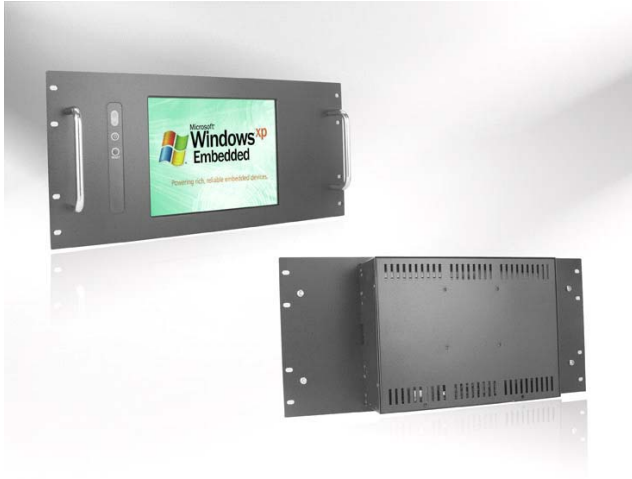


PRM10452-XN40C0-CB0M01

Panel-PC Rack Mount 10.4" 1024x768, 400nits, Intel® Atom N270 Processor

Specification



Features

- 10.4" LCD panel, 1024 x 768, 400 nits
- Intel® Atom N270 Processor
- Intel® 945GSE + ICH7M
- 1 x 200-pin DDR2 SODIMM up to 2GB DDR2 533 SDRAM
- 1xVGA, 2xUSB, 1xCOM, 1xLAN



Panel	Cell Type / Glass Surface	TFT LCD / Black Anti-Glare, low reflection coating	
	Aspec Ratio / Size	4 : 3 / 10.4" viewable diagonal area	
	Active Area / Pixel Pitch	210.4(H) x 157.8(V) mm / 0.2055(H) x 0.2055(V) mm	
	Native Resolution / Color	1024(H) x 768(V) / 16.2 Million	
	Brighthess / Contrast	400 cd/m ² (typ) / 1200 : 1	
	Response Time	≤ 25 ms	
	Viewing Angle (Typical)	H. 176° (- 88° ~ + 88°) , V. 176°(- 88° ~ + 88°)	
	Light Source	CCFL, Long life, 50,000 hrs (typ)	
System	CPU	Intel Atom N270 ; FSB 533MHz, 45nm process technology	
	BIOS	Award 16MB SPI	
	System / Graphic Chipset	Intel® 945GSE + ICH7M / integrated Graphic Media Accelerator 950	
	System Memory	1 x 200-pin DDR2 SODIMM up to 2GB DDR2 533 SDRAM	
	HDD	2 x SATA	
	I/O Ports	1 x VGA	
		2 x USB	
1 x COM (RS232)			
1 x LAN			
Expension	1 x Mini PCI-e		
Power	Power Input	DC 12V	
	Power Consumption	28 Watt, <1 Watt	
Environmental	Operating Temperature	0°C~60°C(32°F~140°F)	
	Operating Humidity	0%~95%(non-condensing)	

Options	Touch	Enhanced Pane	Other		
	Resistive(With Glass)	High Brightness Panel	WiFi	Networking Digital Signage	
	Capactive	Panel-LED Backlight	3G	Web Cam	
	SAW	Wide Temperature	Bluetooth	Motion Sensor	
		Wide Viewing Angle	RFID	Auto LightSensor	
		Sunlight Readable		Auto-Dimming	

Winsonic®

Winsonic Electronics CO.,LTD. TEL:886-3-3704789 FAX:886-3-3704722 E-mail:sales@ewinsonic.com
No.290-1 Wun-Jhong Rd. Taoyuan City, Taoyuan Taiwan R.O.C

Online Download

www.ewinsonic.com