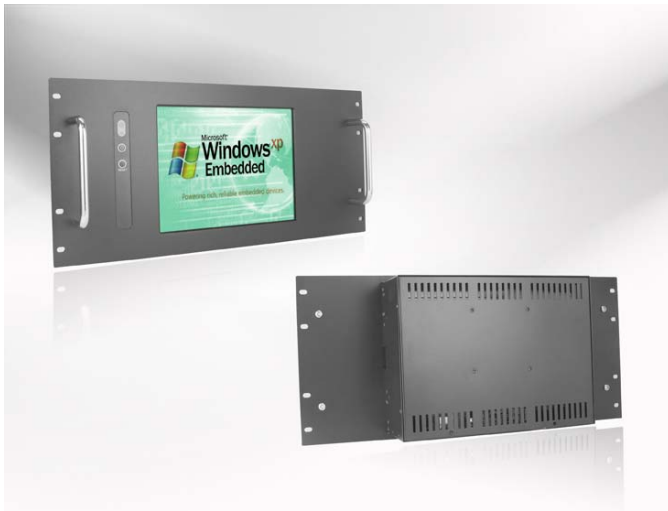


# PRM10452-SN35C0-CB0M01

Panel-PC Rack Mount 10.4" 800x600, 350nits, Intel® Atom N270 Processor

## Specification



### Features

- 10.4" LCD panel, 800 x 600, 350 nits
- Intel® Atom N270 Processor
- Intel® 945GSE + ICH7M
- 1 x 200-pin DDR2 SO-DIMM up to 2GB DDR2 533 SDRAM
- 1xVGA, 2xUSB, 1xCOM, 1xLAN



Panel	Cell Type / Glass Surface	TFT LCD / Black Anti-Glare, low reflection coating		
	Aspec Ratio / Size	4 : 3 / 10.4" viewable diagonal area		
	Active Area / Pixel Pitch	211.2(H) x 158.4(V) mm / 0.264(H) x 0.264(V) mm		
	Native Resolution / Color	800(H) x 600(V) mm / 0.264(H) x 0.264(V) mm		
	Brighthness / Contrast	350 cd/m <sup>2</sup> (typ) / 500 : 1		
	Response Time	≤ 35 ms		
	Viewing Angle (Typical)	H. 120° (- 60° ~ + 60°) , V. 100°(- 60° ~ + 40°)		
	Light Source	CCFL, Long life, 50,000 hrs (typ)		
System	CPU	Intel Atom N270 ; FSB 533MHz, 45nm Processor		
	BIOS	Award 16MB SPI		
	System / Graphic Chipset	Intel® 945GSE + ICH7M / Graphic Media Accelerator 950		
	System Memory	1 x 200-pin DDR2 SO-DIMM up to 2GB DDR2 533 SDRAM		
	HDD	2 x SATA		
		I/O Ports	1 x VGA	
			2 x USB	
1 x COM (RS232)				
1 x LAN				
Expension	1 x Mini PCI-e			
Power	Power Input	DC 12V		
	Power Consumption	26 Watt, <1 Watt		
Environmental	Operating Temperature	0°C ~60°C (32°F~140°F)		
	Operating Humidity	0%~95%(non-condensing)		

Options	Touch	Enhanced Pane	Other	
	Resistive(With Glass)	High Brightness Panel	WiFi	Networking Digital Signage
	Capactive	Panel-LED Backlight	3G	Web Cam
	SAW	Wide Temperature	Bluetooth	Motion Sensor
		Wide Viewing Angle	RFID	Auto LightSensor
		Sunlight Readable		Auto-Dimming

**Winsonic**®

Winsonic Electronics CO.,LTD. TEL:886-3-3704789 FAX:886-3-3704722 E-mail:sales@ewinsonic.com  
No.290-1 Wun-Jhong Rd. Taoyuan City, Taoyuan Taiwan R.O.C

Online Download

[www.ewinsonic.com](http://www.ewinsonic.com)