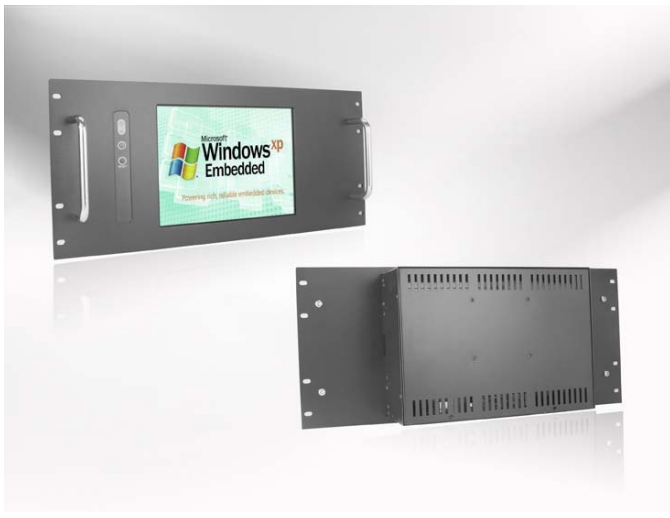


PRM12W52-WE45C0-CB0M01

Panel-PC Rack Mount 12" 1280x800, 450nits, Intel® Atom N270 Processor

Specification



Features

- 12" LCD panel, 1280 x 800, 450 nits
- Intel® Atom N270 Processor
- Intel® 945GSE + ICH7M
- 1 x 200-pin DDR2 SO-DIMM up to 2GB DDR2 533 SDRAM
- 1xVGA, 2xUSB, 1xCOM, 1xLAN



Panel	Cell Type / Glass Surface	TFT LCD / Black Anti-Glare, low reflection coating
	Aspec Ratio / Size	wide / 12" viewable diagonal area
	Active Area / Pixel Pitch	261.12(H) x 163.20(V) mm / 0.204 (H) x 0.204 (V) mm
	Native Resolution / Color	1280(H) x 800 (V) / 262 K
	Brignthness / Contrast	450 cd/m ² (typ) / 350:1
	Response Time	≤ 15 ms
	Viewing Angle (Typical)	H. 130° (- 65° ~ + 65°) , V. 115°(- 65° ~ + 50°)
	Light Source	CCFL, Long life, 50,000 hrs (typ)
System	CPU	Intel Atom N270 ; FSB 533MHz, 45nm Processor
	BIOS	Award 16MB SPI
	System / Graphic Chipset	Intel® 945GSE + ICH7M / Graphic Media Accelerator 950
	System Memory	1 x 200-pin DDR2 SO-DIMM up to 2GB DDR2 533 SDRAM
	HDD	2 x SATA
	I/O Ports	1 x VGA
		2 x USB
1 x COM (RS232)		
1 x LAN		
Expension	1 x Mini PCI-e	
Power	Power Input	DC 12V
	Power Consumption	26 Watt, <1 Watt
Environmental	Operating Temperature	0°C ~60°C (32°F~140°F)
	Operating Humidity	0%~95%(non-condensing)

Options	Touch	Enhanced Pane	Other	
	Resistive(With Glass)	High Brightness Panel	WiFi	Networking Digital Signage
	Capactive	Panel-LED Backlight	3G	Web Cam
	SAW	Wide Temperature	Bluetooth	Motion Sensor
		Wide Viewing Angle	RFID	Auto LightSensor
		Sunlight Readable		Auto-Dimming

Winsonic®

Winsonic Electronics CO.,LTD. TEL:886-3-3704789 FAX:886-3-3704722 E-mail:sales@ewinsonic.com
No.290-1 Wun-Jhong Rd. Taoyuan City, Taoyuan Taiwan R.O.C

Online Download

www.ewinsonic.com