

# FLEXIPANELS® - FP3043

- ✓ NEW HIGH PERFORMANCE 4.3" HMI FROM **RENU ELECTRONICS**
- ✓ BRAND NEW ATTRACTIVE SLIM HOUSING
- ✓ SUITABLE FOR VARIETY OF APPLICATIONS
- ✓ HUGE MEMORY FOR SCREENS AND GRAPHICS
- ✓ GIVES REAL VALUE FOR YOUR MONEY





## Salient Features

- ✓ 4.3" TFT Color display with touch screen
- ✓ Two serial communication ports
- ✓ One USB programming port
- ✓ One USB Host port
- ✓ One Ethernet port
- ✓ One SD card slot
- ✓ Supports Horizontal and Vertical display orientation
- ✓ High quality color display
- ✓ Front Panel mounting with IP66 rating
- ✓ Multilanguage support with true type Windows fonts
- ✓ CE, UL Class I Div 2, RoHS

# Model Comparison

# Protocols Supported Include

Models		FP3043T	FP3043TN
Display		4.3" WQVGA Color TFT	4.3" WQVGA Color TFT
Brightness		400 cd/m <sup>2</sup>	400 cd/m <sup>2</sup>
Resolution		480x272 Pixels	480x272 Pixels
Backlight		LED Backlight	LED Backlight
CPU		32-bit RISC processor	32-bit RISC processor
Memory		Up to 128MB	Up to 128MB
Screen Memory		Up to 45MB	Up to 45MB
Historical Alarms		2700 Alarms	2700 Alarms
Retentive Memory		22000 Words (EEPROM)	22000 Words (EEPROM)
Data Log		Up to 20 MB	Up to 20 MB
Serial Comm-unication	Number of ports	2 <sup>#</sup>	2 <sup>#</sup>
	Com1	RS232	RS232
	Com2	RS485	RS485
USB Interfaces	USB Device	1 USB Device Type B micro port for programming	1 USB Device Type B micro port for programming
	USB Host	1 USB Host port	1 USB Host port
SD Card Slot	Type	NA	microSD HC
	Capacity	NA	High Capacity (4GB to 32GB)
	Speed Class	NA	
	UHS Speed Class	NA	
Ethernet Interface		NA	One 10/100 Mbps
RTC		Yes	Yes
Power Supply		24VDC (±15%)	24VDC (±15%)
Power Rating		4W	4W
Operating Temperature		0 to 60° C <sup>##</sup>	0 to 60° C <sup>##</sup>
Storage Temperature		-20 to 85° C	-20 to 85° C
Humidity		10 to 85% non condensing	10 to 85% non condensing
Approvals		CE, UL Class I Div 2	CE, UL Class I Div 2
Mounting		Front Panel Mounting, IP66 rated	Front Panel Mounting, IP66 rated
Weight (Approximate)		200 gms.	200 gms.
Bezel Dimensions (mm)		120W x 89H x 31.5D (Drawing A)	120W x 89H x 31.5D (Drawing B)
Panel Cutout (mm)		111W x 80H	111W x 80H

# FP3043 support One DB9 port that supports RS232 and RS485 levels on different pins.  
 "Y" type cable can be used for separate RS232 and RS485 levels simultaneously.  
 ##For UL, operating temperature range is 0 to 50° C

Serial Driver	FP3043
ABB PLCs	✓
Allen Bradley DF1	✓
Aromat FP Series	✓
Baldor	✓
Danfoss Drive	✓
Delta PLCs	✓
Fatek PLCs	✓
FlexiLogics <sup>*</sup>	✓
FlexiLogics Slave Driver <sup>*</sup>	✓
G9SP Safety Controller	✓
GE SNP	✓
GE SNP-X	✓
Idec PLCs	✓
LG Master K Series PLC	✓
LG Master-K 300S	✓
Mitsubishi FX	✓
Mitsubishi Q series PLCs (Serial)	✓
Modbus ASCII (Unit as Master)	✓
Modbus RTU (Unit as Master)	✓
Modbus RTU (Unit as Slave)	✓
Omron Host Link	✓
Omron Inverter Memobus	✓
Siemens Gas Analyser (Master)	✓
Siemens Micromaster Driver (USS)	✓
Siemens Step-7 Micro	✓
Toshiba (Link Port) Series PLCs	✓
Toshiba Inverters PLC	✓
Toshiba T Series	✓
TriPLC	✓
Twido PLCs	✓
Unitelway PLCs	✓
Universal Serial Driver (ASCII)	✓

Ethernet Driver	FP3043
AB PLC EIP PCCC (Ethernet IP)	✓
FlexiLogics <sup>*</sup>	✓
FlexiLogics Slave Driver <sup>*</sup>	✓
Logix 5000 PLCs	✓
Modbus/TCP Master (Client)	✓
Modbus/TCP Server (Slave)	✓
Universal Ethernet Driver (ASCII)	✓

\*Supported with native programming environment.

# HMI Software Features

LINE / RECTANGLE / ROUNDED RECTANGLE /  
SQUARE / ELLIPSE /

Graphical Objects  
FlexiSoft® supports various  
graphical objects like Rectangle /  
Rounded Rectangle / Ellipse /  
Square and Line.

Multiple Languages

रेणू इलेक्ट्रॉनिक्स

मराठी

Advanced Objects  
FlexiSoft® supports most popular  
advanced objects like Bargraphs,  
Multiple Bargraphs, Analog Meter  
Real Time / Historical Alarms,  
Buttons.

Multiple Bargraphs

Analog Meter

Keypad

BUTTONS

Next Screen

Popup

Toggle

REAL TIME / HISTORICAL ALARMS

Windows Fonts for Data Entry and Data Display

Arial, 12pt

Arial, 14pt

Arial, 18pt

Windows Fonts for Data Entry and Data Display

Times New Roman, 22pt

30pt

42nt

50pt 62

Tahoma

72pt  
90pt

Windows Font for Display Data  
and Data Entry  
FlexiSoft® supports True type  
Windows font for Data Entry and  
Data Display objects. Supported  
fonts are 'Arial', 'Times New  
Roman' and 'Tahoma'.

Picture Library  
FlexiSoft® provides rich picture library.  
It includes many popular image  
categories widely used for industrial  
application development.

Picture Library

Picture Library

Real Time Clock



Date: 30/08/13

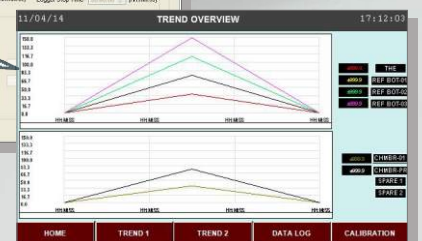
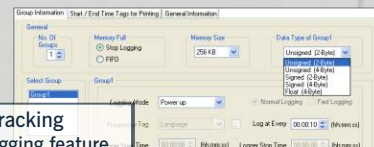


Time: 16:44:46

Day of Week: XXX : 30/08/13

Real Time Clock  
Real Time Clock object helps  
user to display date, time and  
day of week.

Data Logging & Trend Tracking  
FlexiSoft® support data logging feature.  
Real time as well as Historical Trending  
is also supported. The user can also  
display multiple trends with different  
pen color on one screen.





## Supported Objects

Drawing Tools	Advance Objects
<ul style="list-style-type: none"> <li>Line, Rectangle, Ellipse</li> <li>Rounded Rectangle</li> <li>Text, Multilingual text</li> <li>Picture</li> </ul>	<ul style="list-style-type: none"> <li>Buttons</li> <li>Lamps</li> <li>Bargraph</li> <li>Multiple Bargraph</li> <li>Analog Meter</li> <li>Alarm</li> <li>Numeric Keypad</li> <li>ASCII Keypad</li> <li>Custom Keypad</li> </ul>
Data Entry / Data Display	
<ul style="list-style-type: none"> <li>Numeric data</li> <li>Bit data</li> </ul>	
Clock objects	
<ul style="list-style-type: none"> <li>Time</li> <li>Date</li> </ul>	

## Supported Tasks

Supported tasks
<ul style="list-style-type: none"> <li>Button specific tasks</li> <li>Global tasks</li> <li>Screen specific tasks</li> <li>Data exchange tasks</li> </ul>

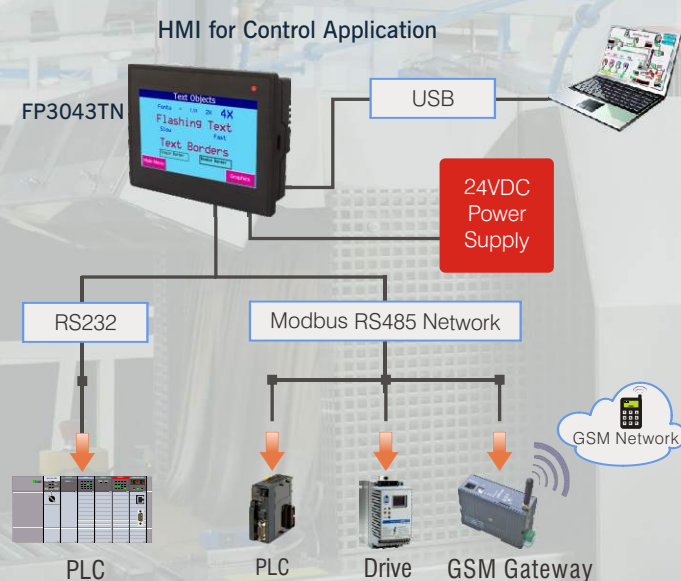
## Supported Printers

FlexiPanels® support following Dot Matrix serial printers:

- EPSON
- SAMSUNG
- TVS



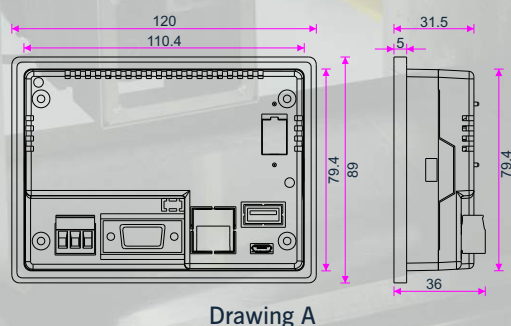
## Application Example



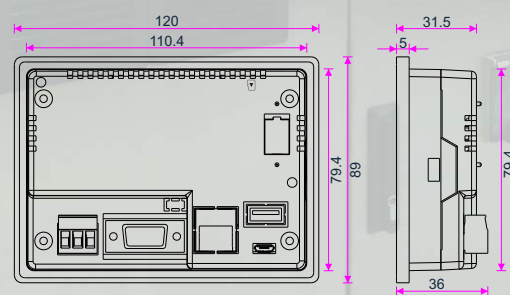
## Ordering Information

Models	Description
FP3043T	4.3" TFT, 24VDC, 2 Serial ports (1 RS232, 1 RS485), 1 USB device, 1 USB host
FP3043TN	4.3" TFT, 24VDC, 2 Serial ports (1 RS232, 1 RS485), 1 USB device, 1 USB host, 1 Ethernet, 1 SD Card Slot
Programming SW	FlexiSoft® v2.3 and later (Free)

## Dimensions



Drawing A



Drawing B

All dimensions are in mm.  
Please contact factory for more information. We welcome an opportunity to develop new, custom drivers and customized units.



### HEAD OFFICE

Survey No. 2/6, Baner Road, Pune - 411045, India.  
Tel : +91 20 2729 2840 Fax : +91 20 2729 2839  
Email : [info@renuelectronics.com](mailto:info@renuelectronics.com)  
Website: [www.renuelectronics.com](http://www.renuelectronics.com)

An ISO 9001:2008 and ISO 14001:2004 certified company