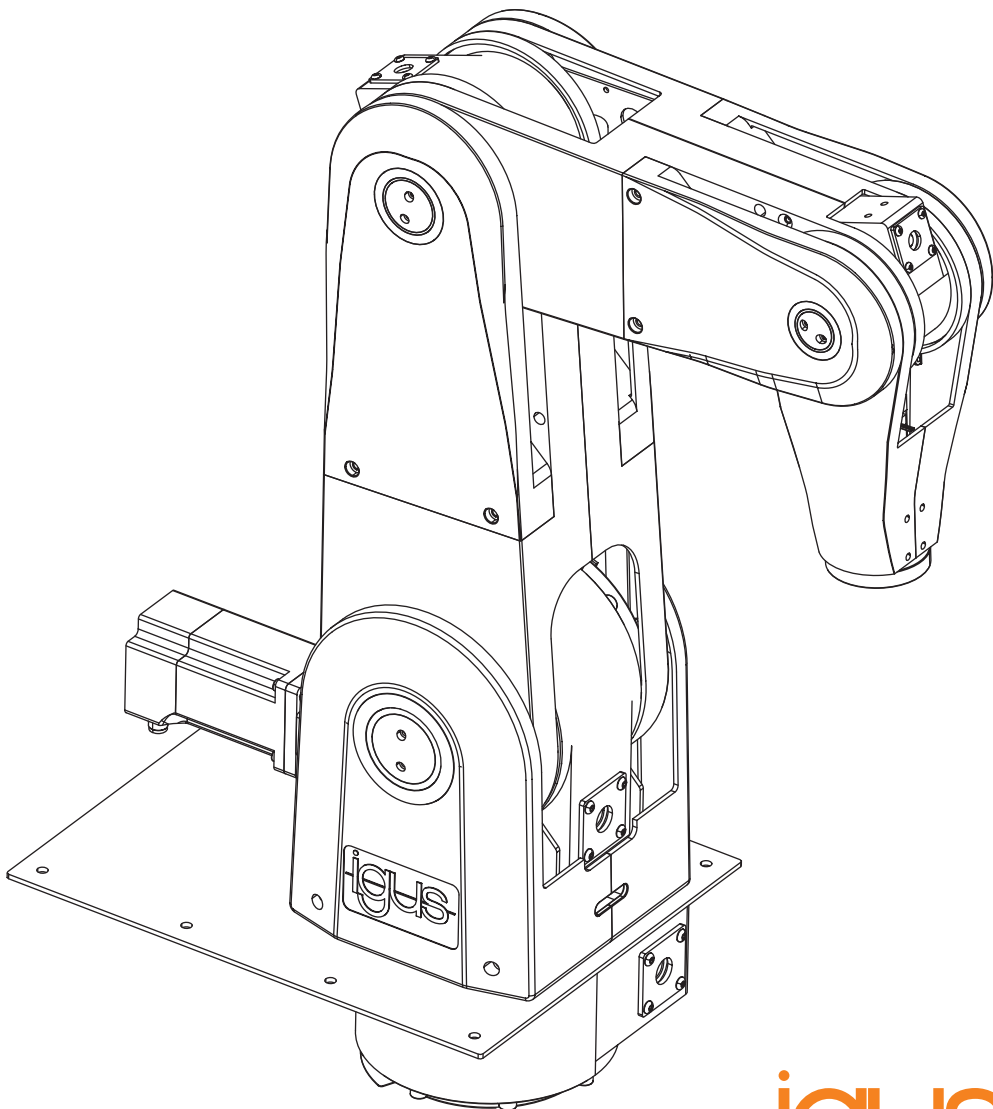



Technische Dokumentation Technical documentation  
robotlink®

# DP VERSION



# Technische Daten Technical data

Positioniergenauigkeit accuracy	+/-1	[mm]
Reichweite reach 5 DOF 4 DOF	790 620	[mm]
Max. Nutzlast max. payload 5 DOF 4 DOF	3	[kg]
Nennreichweite nominal working range	450	[mm]
Dynamik mit dynamics with 500 [g]	min. 7	Picks/min*
Eigengewicht mass 5 DOF 4 DOF	22,4 21,4	[kg]
Mit und ohne integrierte Steuerung with and without integrated control**		
Schrittmotor NEMA23 XL stepper motor Nema 23 XL with	max. 24/48 [V] max. 4,2 [A]	[V] [A]
Leitungslänge Cable length	4	[m]
Leitungslänge Handheld (optional) Cable length handheld (option)	1,5	[m]
Roboter Standardfarbe Robot standard colour		
Stromversorgung Power supply	230 VAC, 50-60 Hz	

Maximale Traglasten und Präzision in Abhängigkeit von Position und Geschwindigkeit.  
Sprechen Sie uns gerne an.

Max. payload and accuracy in relation to position and speed.  
Please get in contact with us.

\*\* Integrierte Steuerung mit Schaltschrank  
integrated control system with switch cabinet



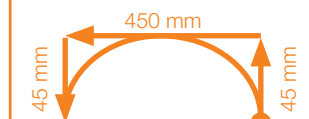
Mehr Informationen auch zu anderen  
Steuerungslösungen unter:

[www.igus.de/roboLink/roboter-steuerung](http://www.igus.de/roboLink/roboter-steuerung)

More information about control systems at:

[www.igus.eu/roboLink/robot-control-system](http://www.igus.eu/roboLink/robot-control-system)

\* Definition Pick definition pic

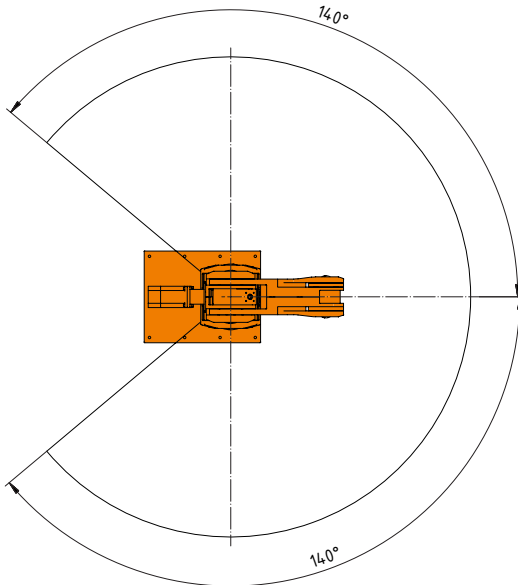
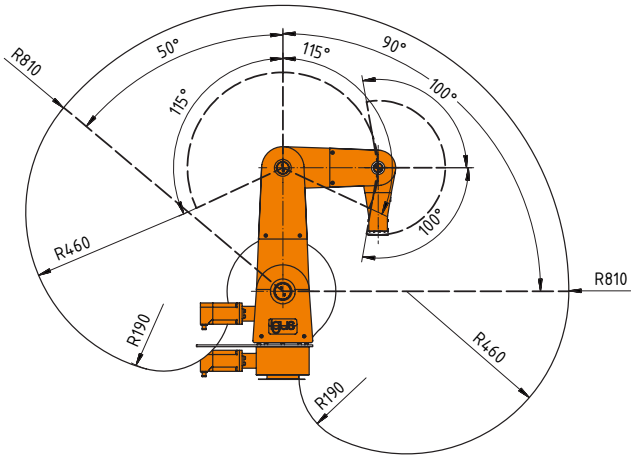
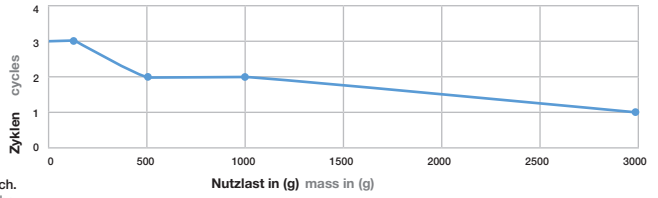


**minimale Lebensdauer**  
min. service life

Nutzlast in (g) mass in (g)	Zyklanzahl in mio. service life in millions cycle
100	3
500	2
1000	2
3000	1

Getestete Lebensdauer mit definierten Pick unter Laborbedingungen im Nennarbeitsbereich.  
Tested service life for the defined pic within the nominal working range

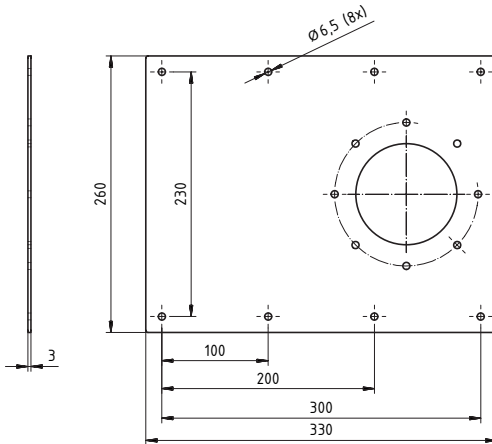
**Zyklanzahl in mio.**  
Service life in millions cycle



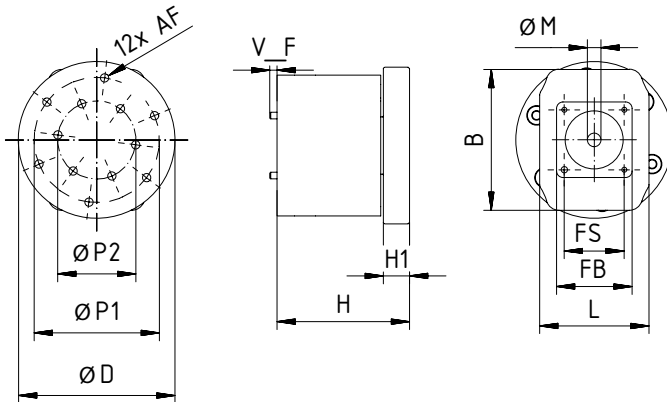
# Anschlussmaße Connecting dimensions

**Artikelnummer** MR-50-BX-01  
**Part No.**

**Beschreibung** Roboter Grundplatte  
**Description** robot ground case



## 5 DOF Version

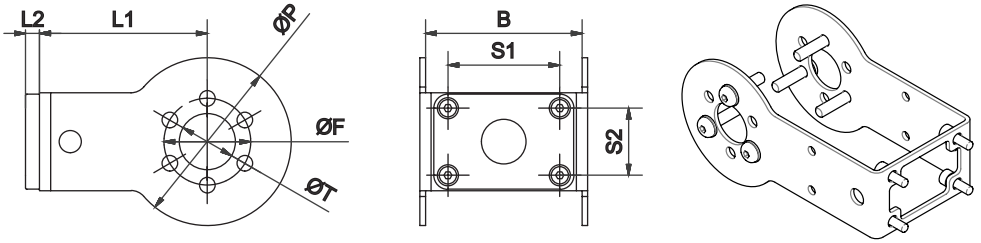


**Abmessung in [mm] Dimension in [mm]**

Art.-Nr.	Part No.	$\varnothing D$	$\varnothing P1$	$\varnothing P2$	AF	V_F	H	$\varnothing M$	FS	FB	L	B	H1
RL-S-17-N11-00-28-020K0		60	48	30	M4 x 8	M2,5 x 2,75	50,75	5	23	29	42	54	10

# Zubehör Accessories

## Greifadapter Gripping adapter 4 DOF Version



Abmessung in [mm] Dimension in [mm]

Art.-Nr. Part No.	L1	L2	S1	S2	B	ØP	ØF	ØT
RL-DC-20-GRI-90-01-NA*	90	5	40	24	56	60	31	20

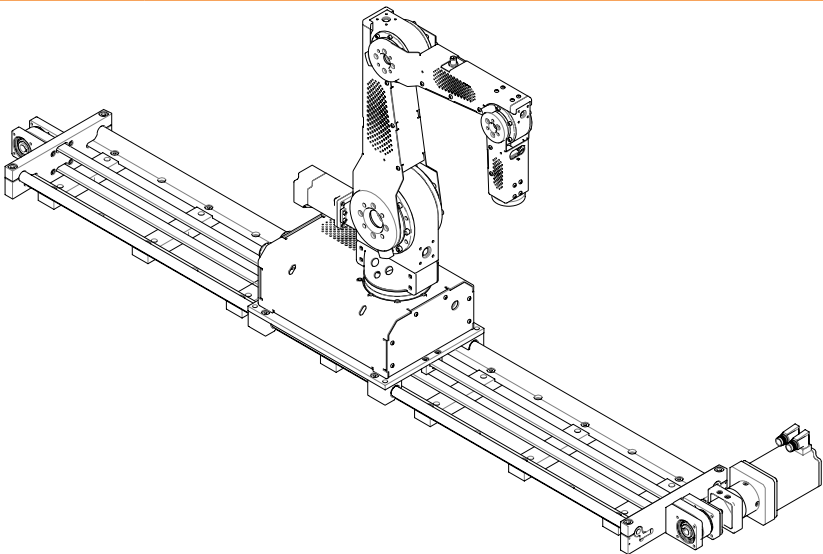
\*Anschlusselement für 4 DOF robotlink® Mounting bracket for 4 DOF robotlink®

## Linearachse für Roboter Linear system for robots

**Artikelnummer** ZLW-S-4811999-180511  
**Part No.**

**Beschreibung** Linearachse zur Positionierung der Roboterkinematik, basierend auf ZLW-20200, Zahnriemenachse mit Motor und Getriebe, NEMA 34 mit Encoder.  
**Description** Linear system for robot positioning, based on ZLW-20200, toothed belt axis with gear and NEMA 34 stepper motor, stroke up to 5,500 [mm]

Hublänge bis zu 5.500 [mm]  
 Linear system for robot positioning, based on ZLW-20200, toothed belt axis with gear and NEMA 34 stepper motor, stroke up to 5,500 [mm]

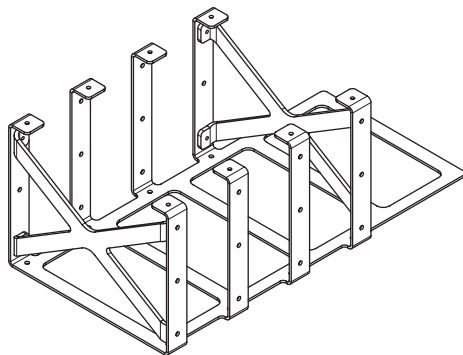
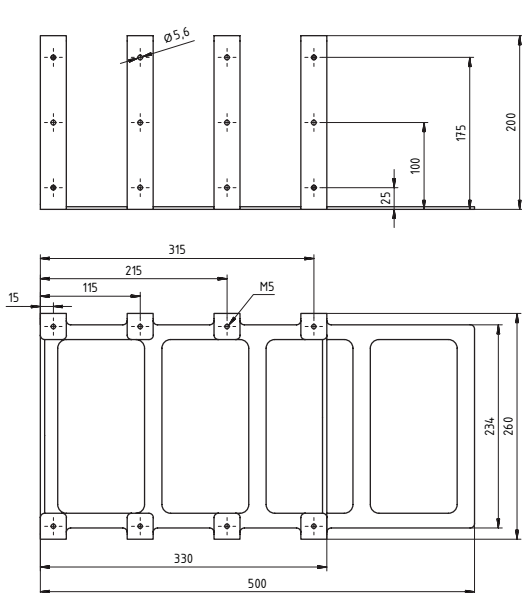


# Zubehör Accessories

## Unterbau für robolink DP Base unit for robolink DP

**Artikelnummer** RL-DP-5532-BX  
**Part No.**

**Beschreibung** Unterbau für Tisch Montage robolink  
**Description** Base unit for table mounting







RL-D-20-HH-01

2x



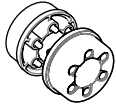
RL-D-20-TT-KL-AR

1x



NOR-20959

2x



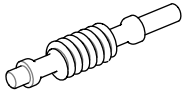
RL-D-20-SRA-KL-RR

2x



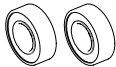
RL-D-WW-31-38-A180-AA

1x



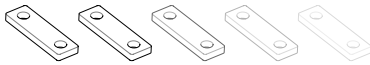
RL-D-WS-31-38-AA

1x



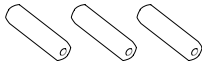
NOR-20947

2x



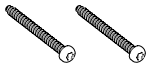
NOR-20629

6x



RL-D-20-DB-30-01

3x



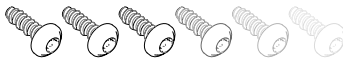
NOR-20140

2x



RL-MAT0155

12x



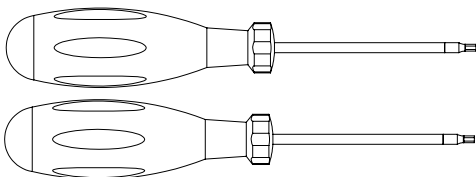
NOR-20136

12x



NOR-20646

12x

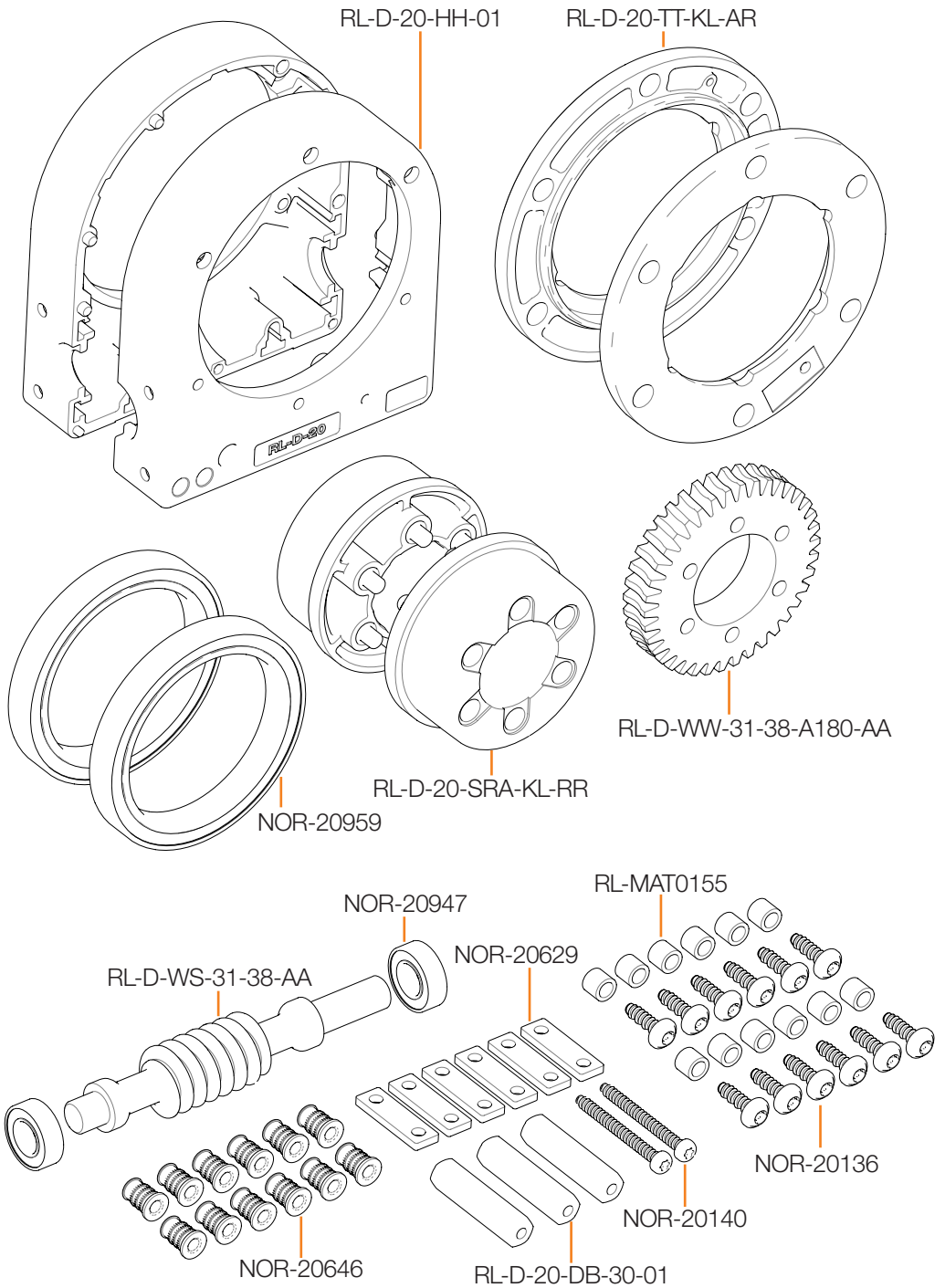


TX10

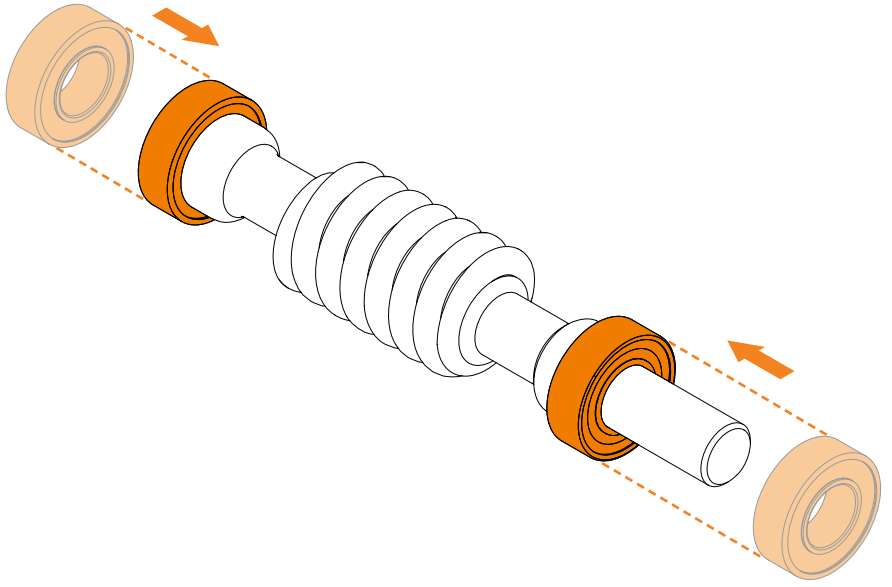
TX15



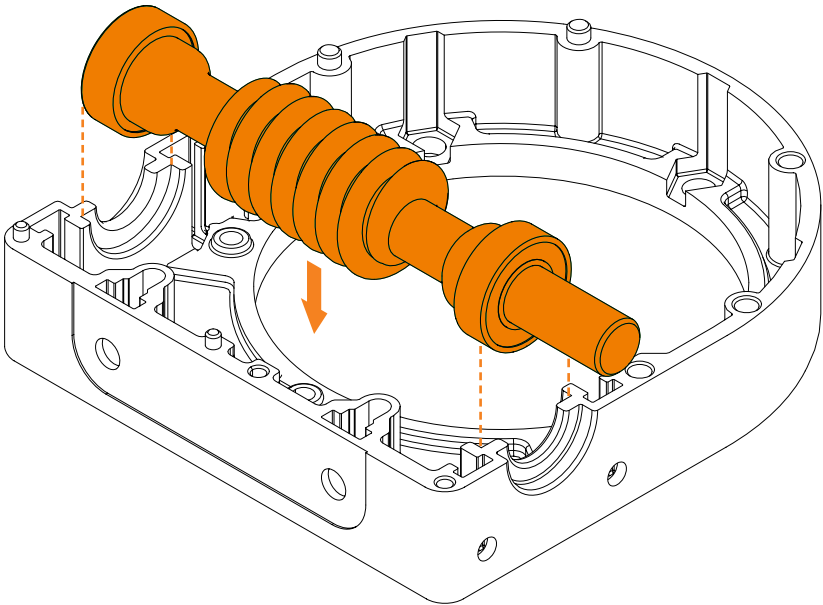




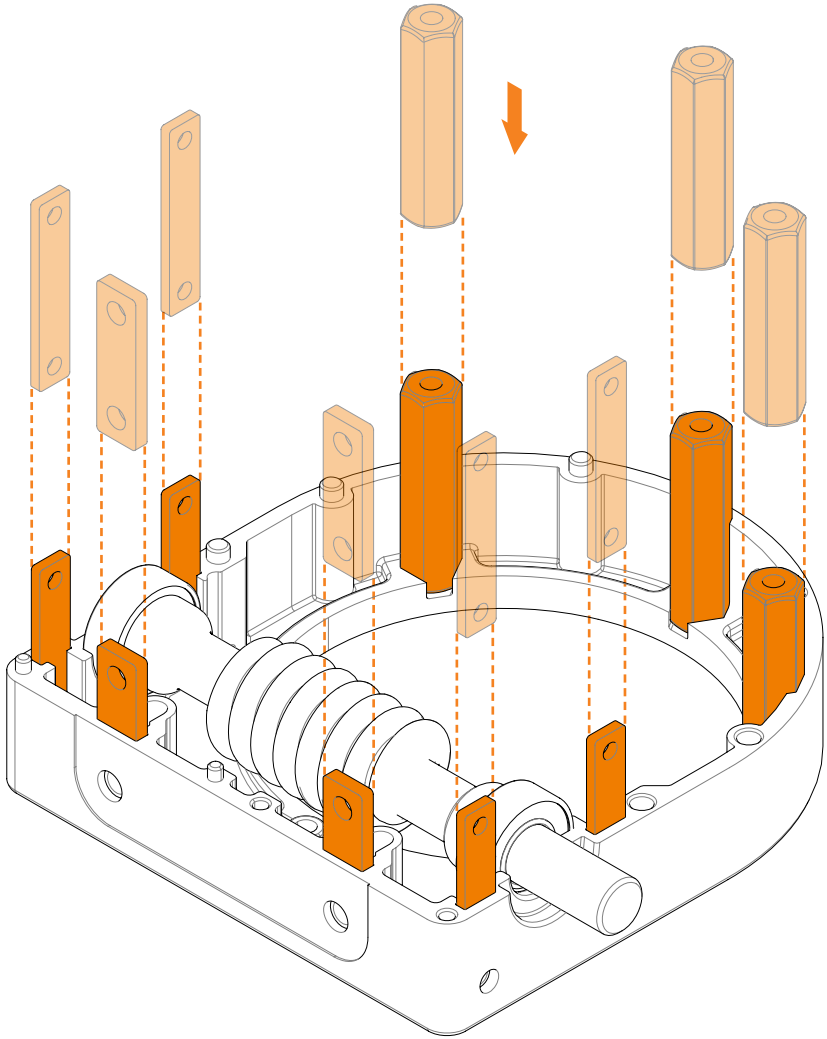
1



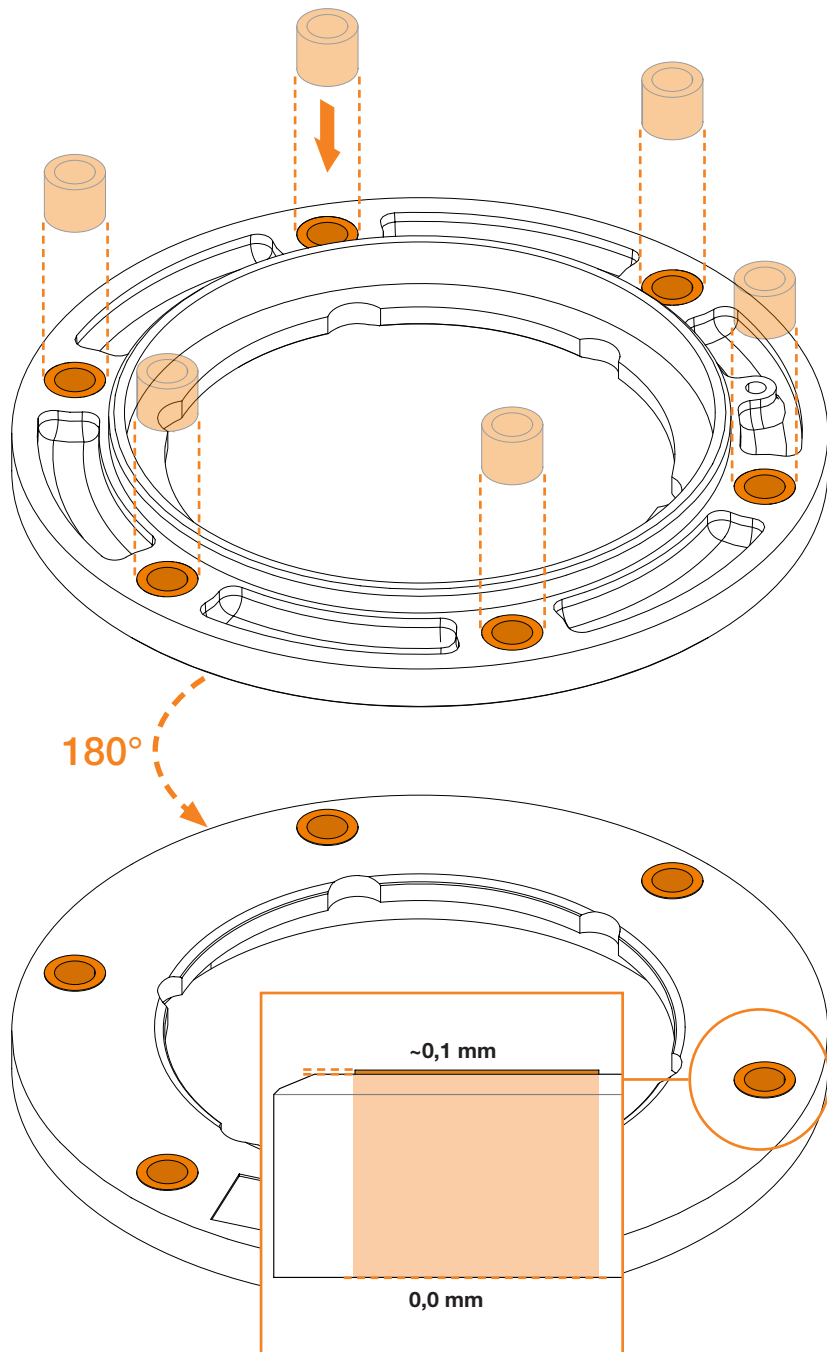
2



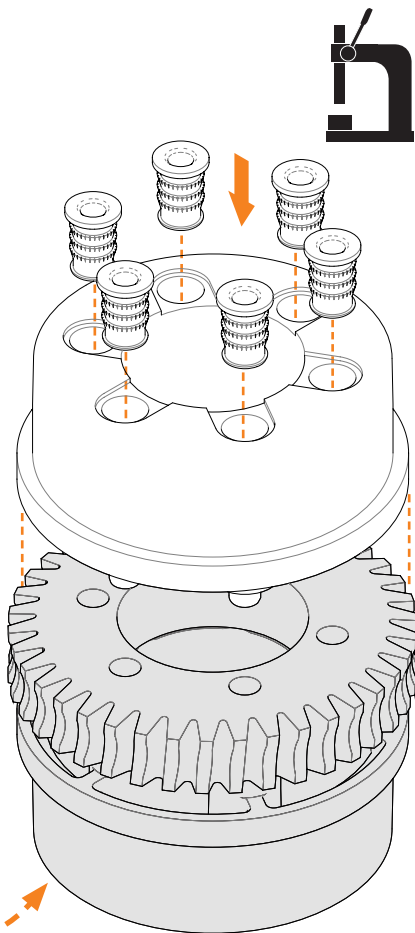
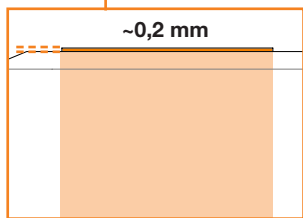
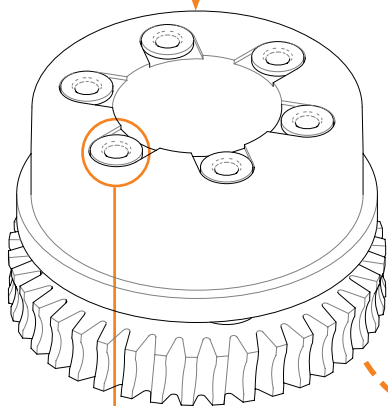
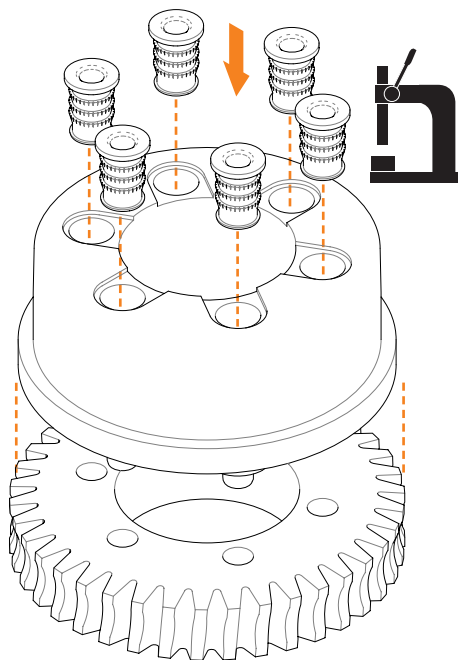
3



4



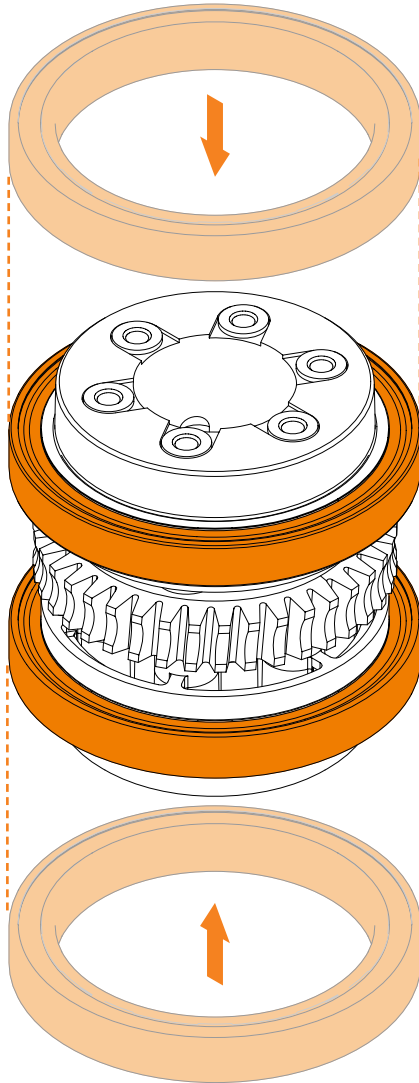
5



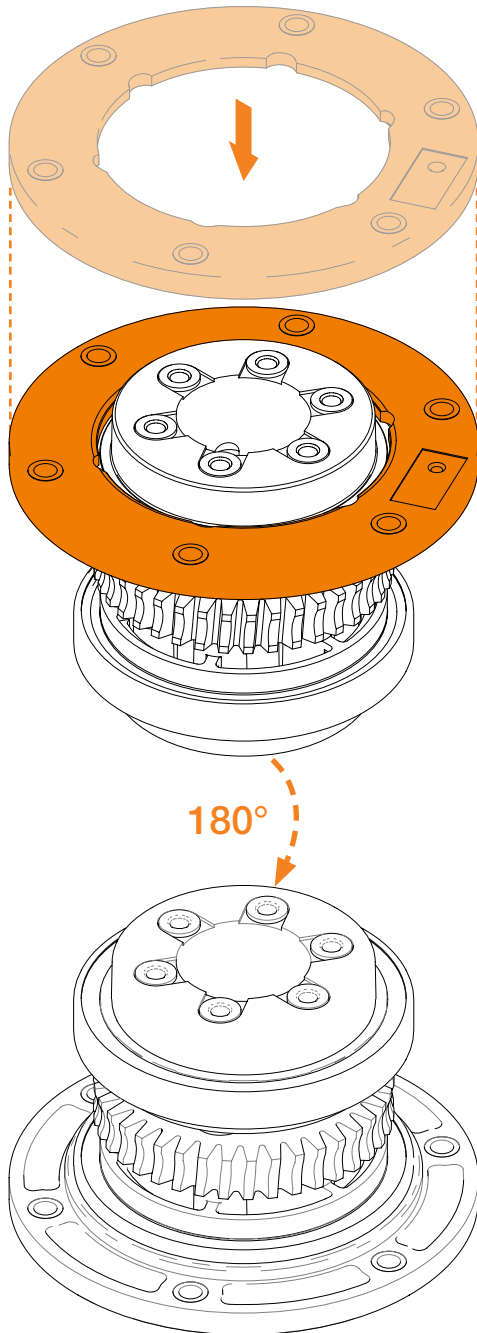
180°



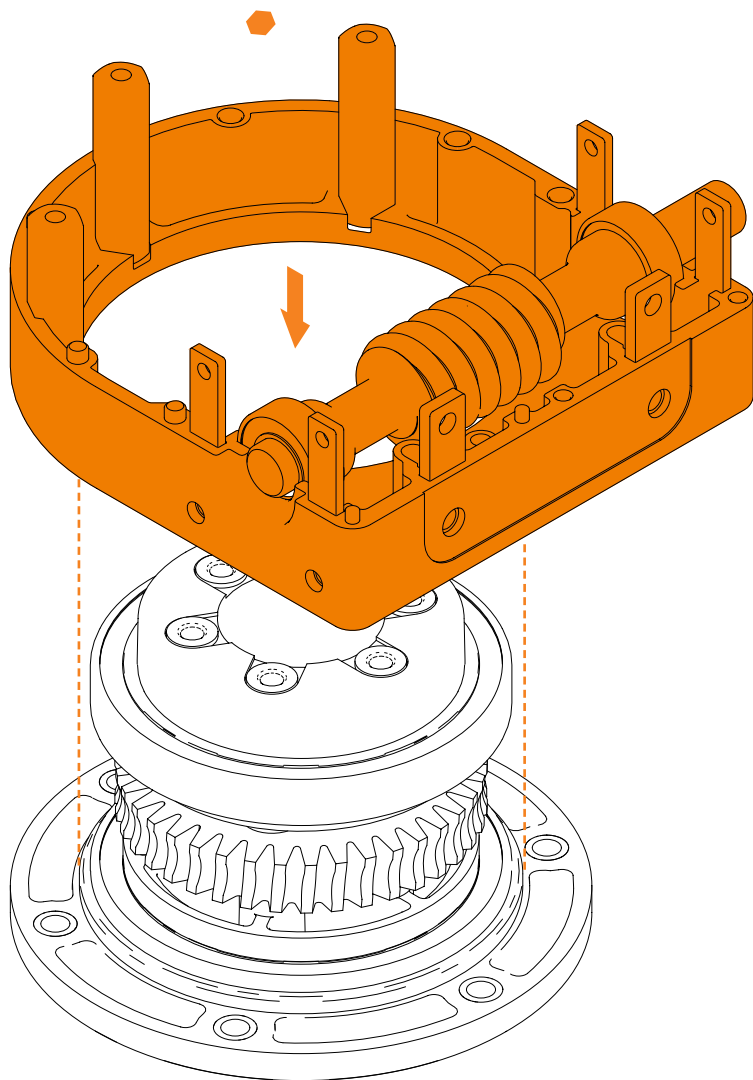
**Einpresshilfe nutzen**  
Use press-fit tool



7

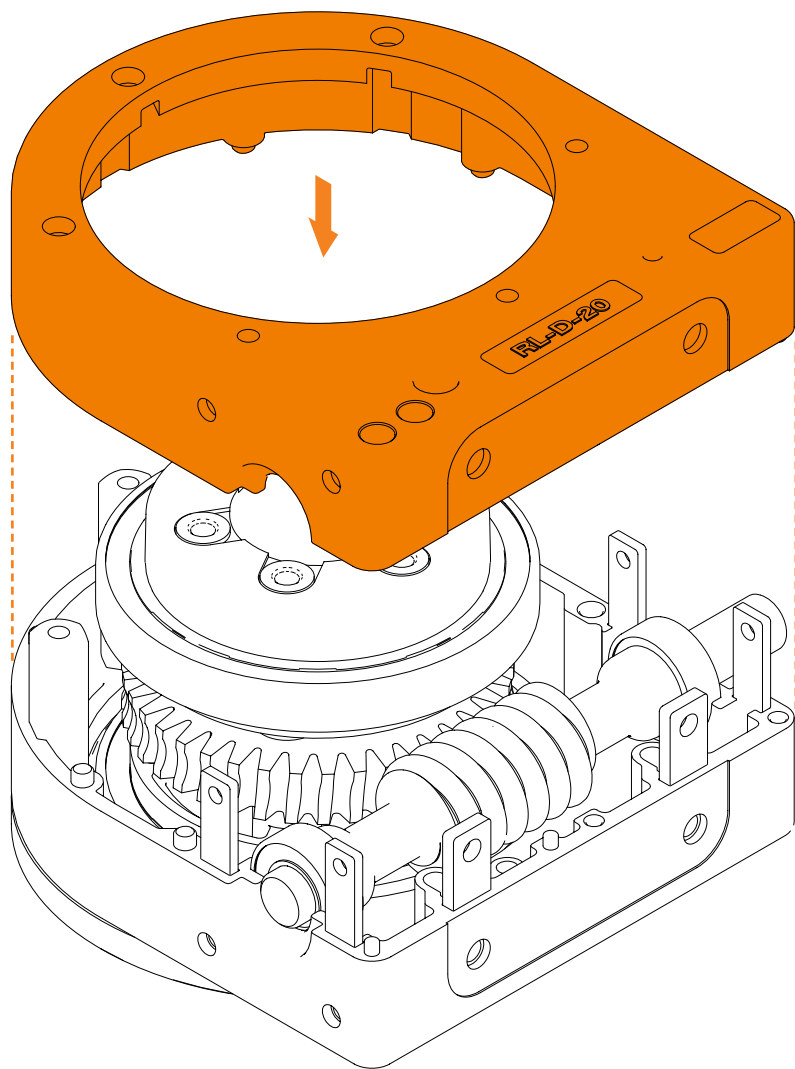


8

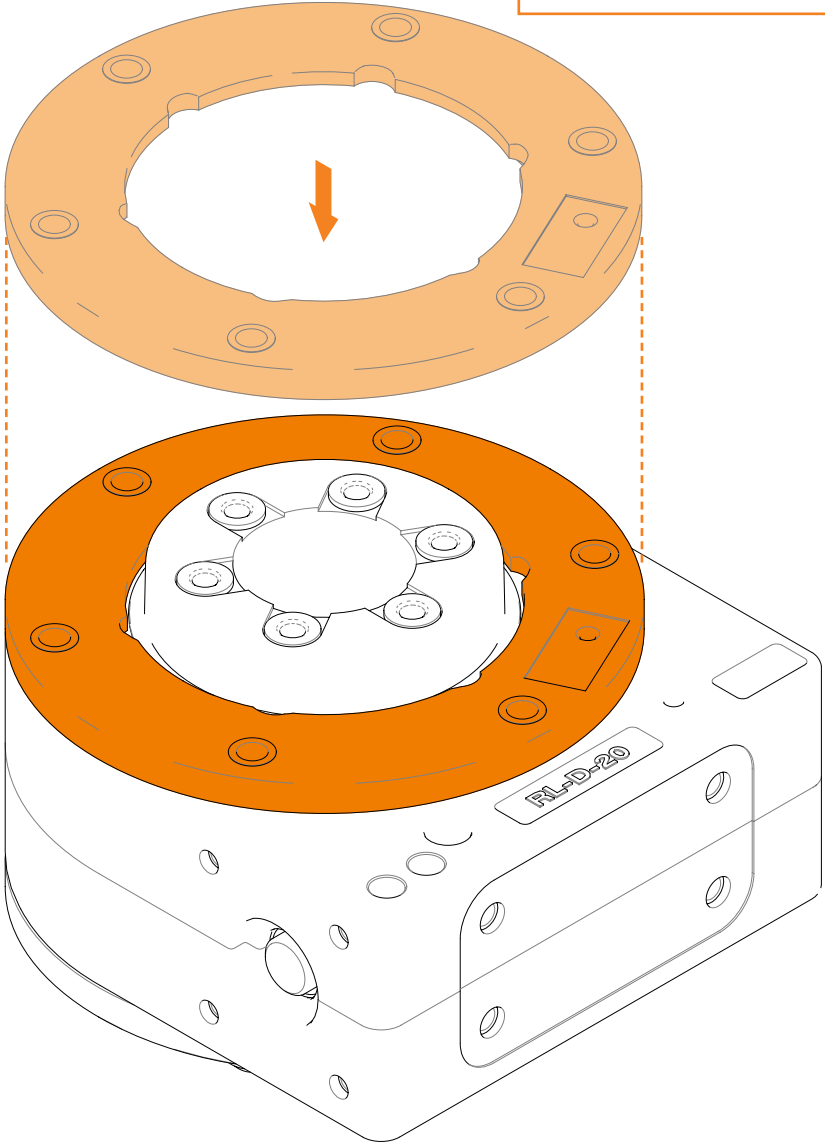




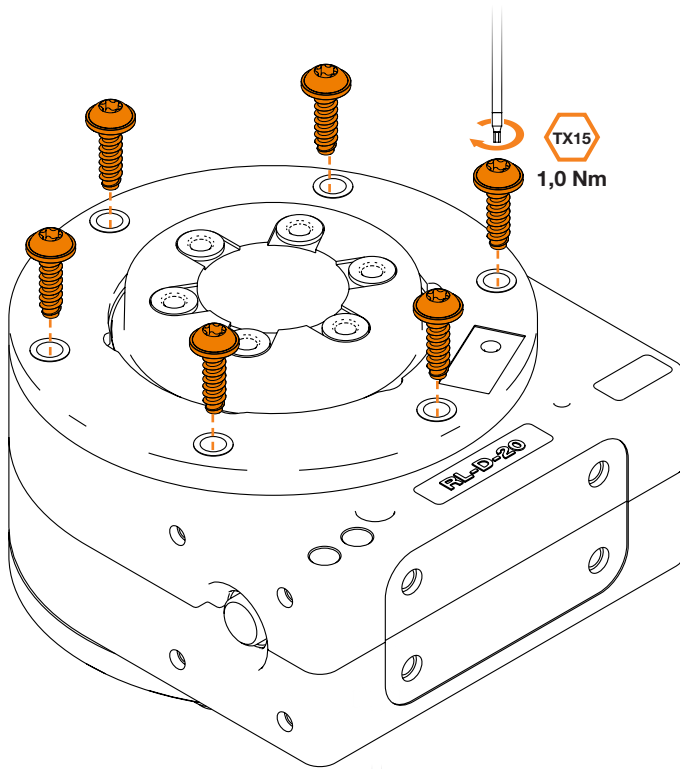
9



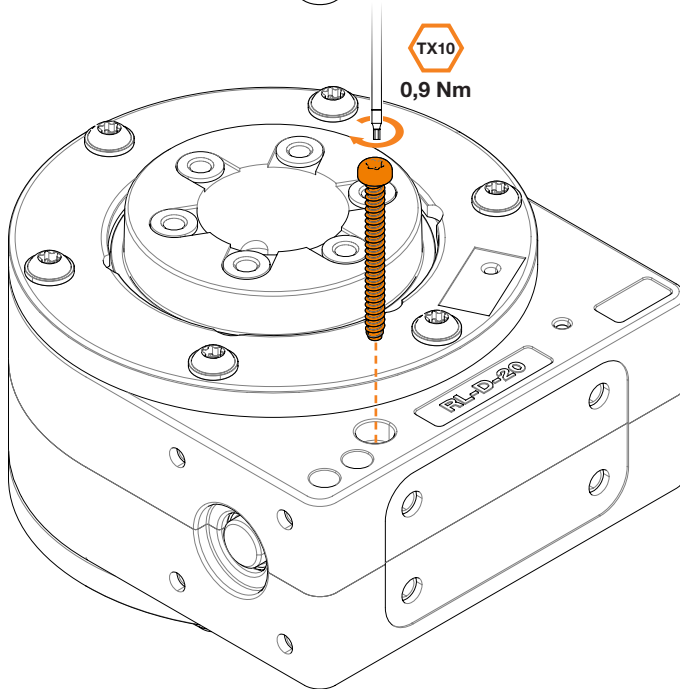
10



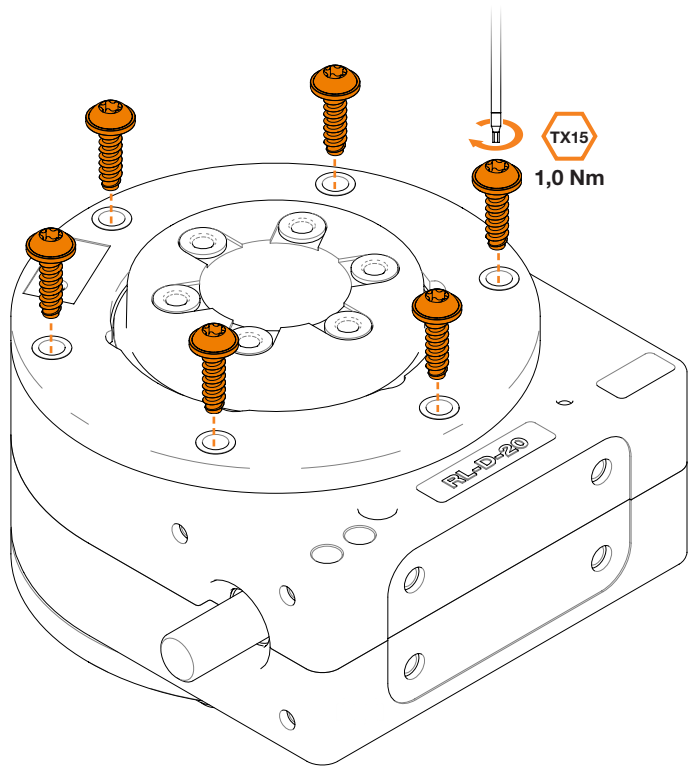
11



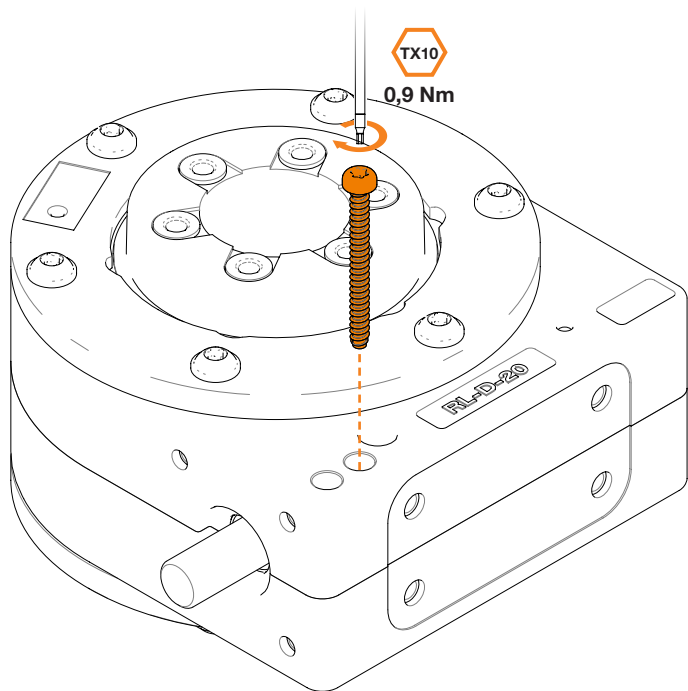
12



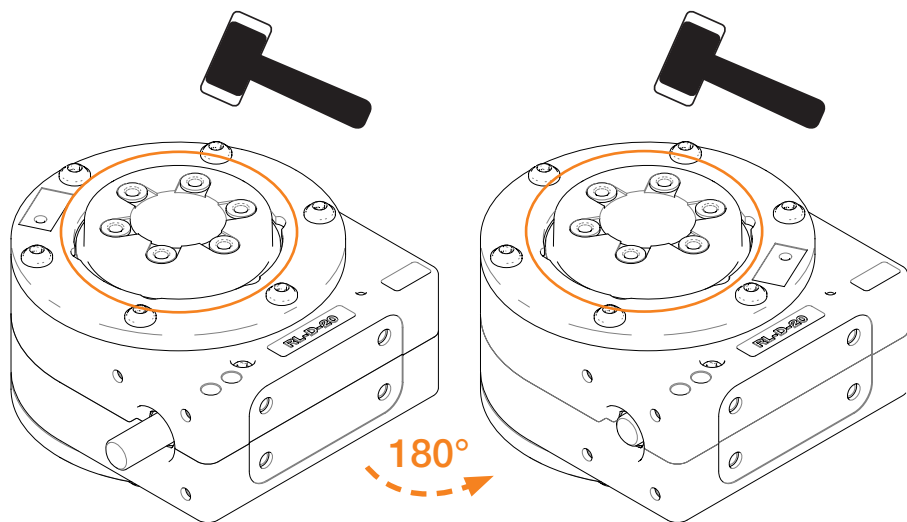
13



14

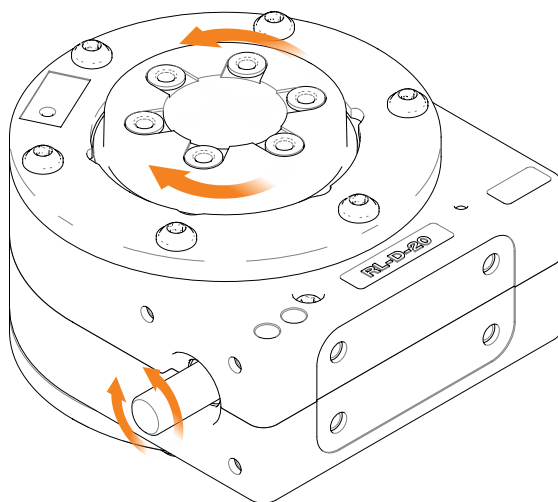


15



control

16









**igus® GmbH**  
**Spicher Str. 1a**  
**51147 Köln Cologne**  
**Tel. +49 2203 9649-145**  
**Fax +49 2203 9649-334**  
**info@igus.de**  
**www.igus.de**  
**www.igus.eu**

**© igus® GmbH**

Herausgeber ist die igus® GmbH, Deutschland  
Published by igus® GmbH, Germany  
MAT0074623.25 Stand Issue 12/2019  
Technische Änderungen vorbehalten  
Subject to technical alterations