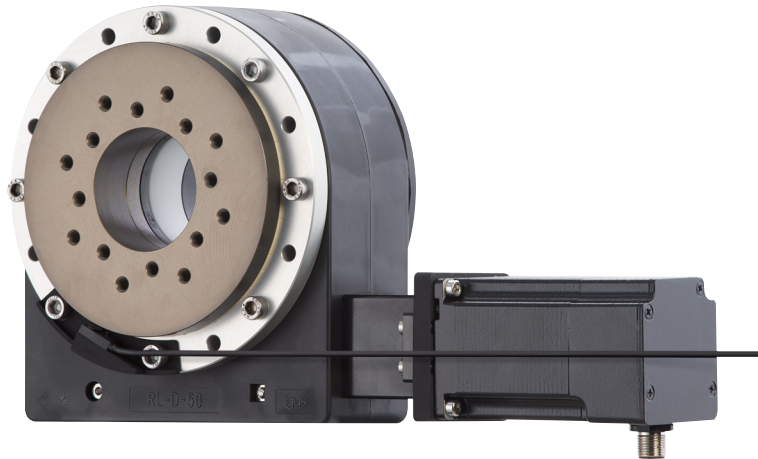


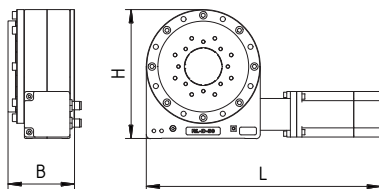
Stückliste			
OBJEKT	Anz.	Artikelnr.	Bezeichnung
1	1	RL-D-20-A0162	RL-D-20...01000 / MK-N17-02 / IK
2	1	RL-D-30-A0107	RL-D-30...01000 / MK-N23-02 / IK
3	1	RL-D-50-A0103	RL-D-50...01035 / MK-N23XL-02 / IK
4	1	RL-D-50-A0104	RL-D-50...01033 / MK-N23XL-02 / IK
5	1	RL-DC-30-20-270-AA	Connection part 270mm
6	1	RL-DC-50-30-350-AA	Connection part 350mm
7	1	RL-DC-50-50-T-01	Connection part 50-50
8	1	RL-DC-BL-50-BX-AA-02	Connection part Base-50
9	1	RL-DC-CBK-5532-MEI-01	Chain/Cable Kit

Freigabe	Datum:	Name:	Unterschrift:
Für Entscheidungen über die Geeignetheit der von igus® zu liefernden Produkte für bestimmte Anwendungsfälle und Konstruktionen, in die die igus®-Produkte einbezogen sind, ist ausschließlich der Kunde verantwortlich. Die ausschließliche Verantwortung des Kunden für die Konstruktion und/oder Verwendung liegt auch dann beim Kunden, wenn igus in die Entwicklung eines vom Kunden geschaffenen Produktes einbezogen wird und dabei, etwa durch Ratschläge oder Empfehlungen, mitwirkt.			Schutzvermerk nach DIN ISO 16016 beachten
Werkstoff:			
mit <input type="text"/> gekennzeichnete Maße sind Prüfmaße		Maßstab:	Zulässige Abweichung für Maße ohne Toleranzangabe
			Nennmaßbereich über bis 0,5 6 30 120 315 1000 2000 4000
Zeichnungsänderungen:		Bauteilvolumen:	DIN ISO 2768-m ± 0,1 ± 0,2 ± 0,3 ± 0,5 ± 0,8 ± 1,2 ± 2
		Zeichnungsstand:	Zeichnungsnummer: RL-10510
		04.05.2017	Assembly RL-D
		Datum Name	50-50-30-20
		erstellt 04.05.2017 F. Berger	
		geprüft	
		igus® Spicher Str. 1a 51147 Köln www.igus.de	Artikelnummer: RL-D-RBT-5532-BC
		Plastics for longer life ®	Blatt 1 A3
Index	Änderung	Datum	Name
			Dateiname: RL-D-RBT-5532-BC - RL-10510.idw

Component RL-D-50-A0103



Weight	4,1 kg
Max. output torque	50 Nm
Max. speed (at max. load)	6 rpm



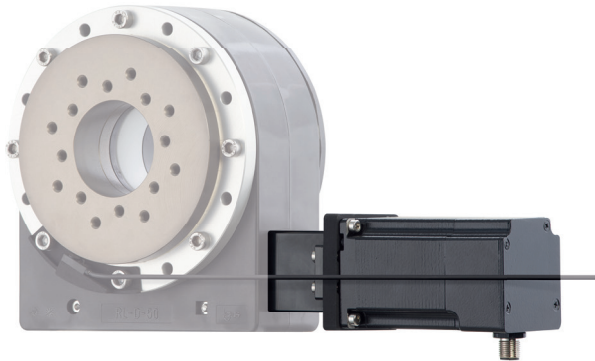
... Dimensions [mm]

B	L	H
87,5	309	170

... consisting of the following individual components

1. Motor kit **RL-D-50-MK-C-N23XL-02**
2. Robot joint **RL-D-50-102-48-01035**
3. INI kit (option) **RL-D-50-IK-001**

Motor kit RL-D-50-MK-C-N23XL-02



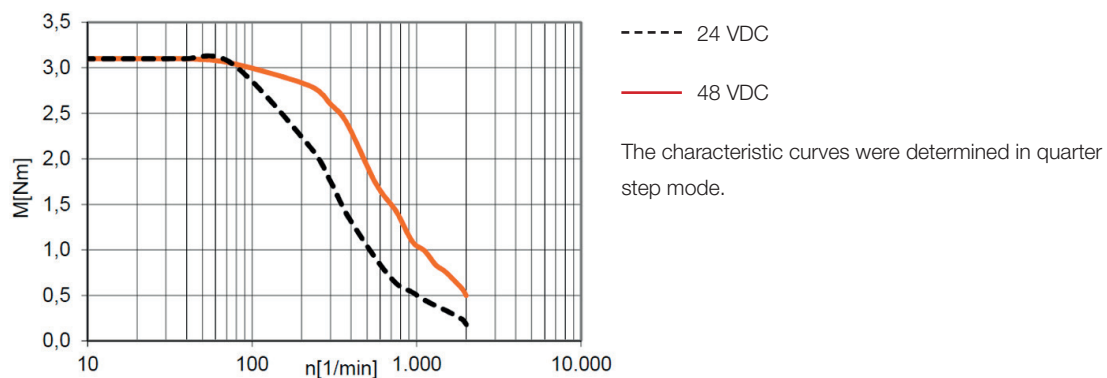
... for distance over hubs

60 (Nema23XL)

Maximum voltage	60 VDC
Nominal voltage	24-48
Nominal current	4,2 A
Holding torque	3,5 Nm
Ratchet torque	0,075 Nm
Step angle	1.8 ±5%
Resistance/phase	0.65 ±10%
Inductivity/phase	3.2 ±20%
Moment of inertia of rotor	0,84 kgcm ²
Shaft load, axial	15 N
Shaft load, radial (20 mm)	63 N

... Motor identification

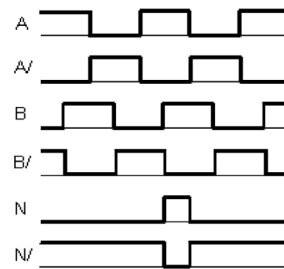
MOT-AN-S-060-035-060-M-C-AAAC



... Motor encoder

Operating voltage	5 V
Signals/rotation	500
Line driver	RS422 protocol
Zero signal/index	yes

Signal shape
(clockwise)



... Motor weights

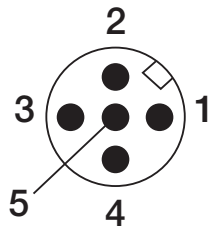
Strands	1,45 kg
Connector	1,56 kg
Encoder	1,58 kg
Encoder and brake	1,82 kg

... Operating data

CE	EMC guideline
Insulation class	B
Max. humidity	85 %
IP rating - motor housing	IP65 (shaft seal IP52), motor with stranded wires IP40
Max. allowable temperature increase	80 °C
Ambient temperature max.	+50°C
Ambient temperature min.	-10°C

... Pin assignment of stepper motor connector

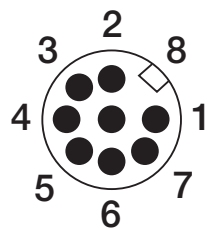
Motor size: 42, 56, 60 (Nema17, 23, 23XL)



PIN	Signal	Phase	Colour
1	A/	1	brown
2	A	1	white
3	B	2	blue
4	B/	2	black
5	PE	–	green-yellow
Housing	Shielding	–	–

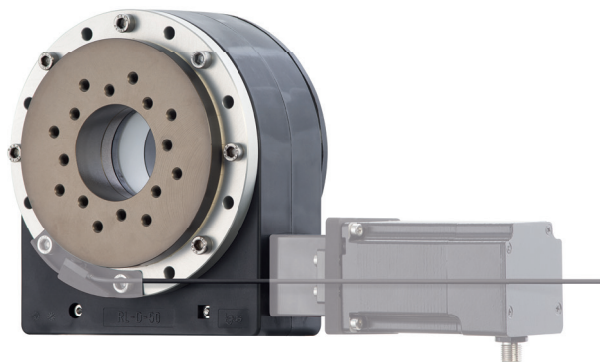
... Pin assignment encoder

Motor size: 42, 56, 60 (Nema17, 23, 23XL)



PIN	Signal	Colour
1	A	white
2	A/	brown
3	B	green
4	B/	yellow
5	0V	grey
6	N/	pink
7	N	blue
8	5V DC	red
Housing	Shielding	–

Robot joint
RL-D-50-102-48-01035

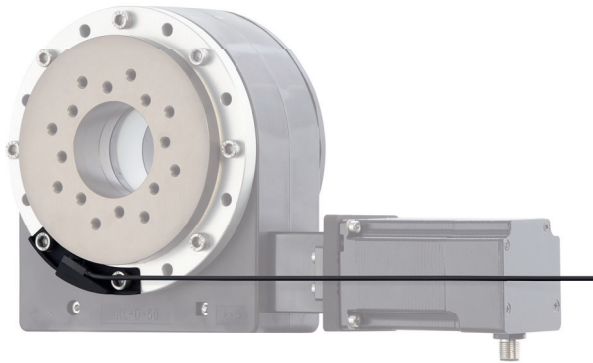


... Technical data

Max. output torque dyn., periodic use (<30% duty)	50 Nm
Max. axial stat. load in the case of horizontal mounting	< 1,200 N
Max. radial torque (permanent)	25 Nm
Efficiency	< 0.4
Transmission	48:1
Axis distance	63 mm
Backlash	< 0.5 °
Breakaway torque	< 10 cNm

Type			Dimensions [mm]		
RL-	D-	50-	102-	48-	01035
roboLink [®]	Type	Installation size	Design	Reduction	Variation

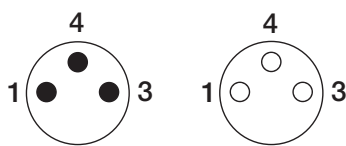
INI kit (option) RL-D-50-IK-001



... Technical data

igus® part no.	INI-AB-I-025-A-AA
Fitting	M8 x 1
Switching output	PNP
Switching function	NO (Closer)
Operating voltage	10...30 V DC
Rated operational current	100 mA
Protection class	IP67

... Pin assignment INI kit



PIN	Signal	Colour
1	24V	brown
3	0V	blue
4	Signal	black

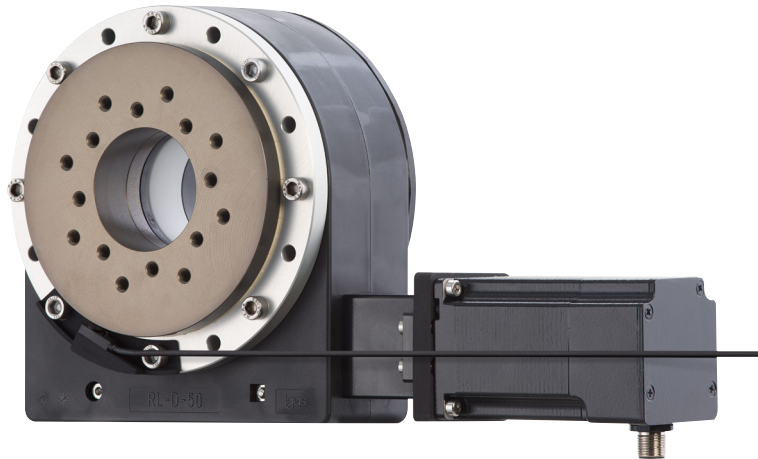


Contact:

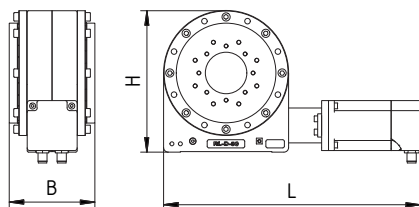
Martin Raak
Product Manager robolink®

Phone +49 2203 9649 409
Fax +49 2203 9698 409
mraak@igus.de

Component RL-D-50-A0104



Weight	4,8 kg
Max. output torque	50 Nm
Max. speed (at max. load)	6 rpm



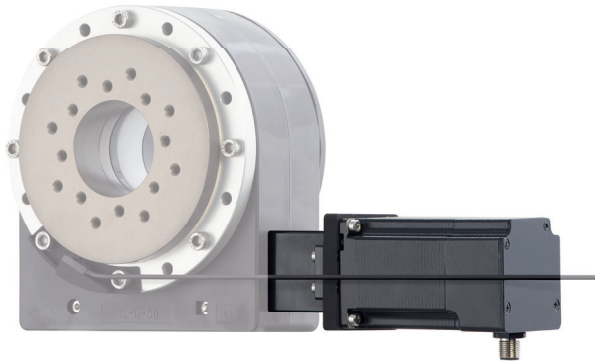
... Dimensions [mm]

B	L	H
103	309	170

... consisting of the following individual components

1. Motor kit **RL-D-50-MK-C-N23XL-02**
2. Robot joint **RL-D-50-101-48-01033**
3. INI kit (option) **RL-D-50-IK-001**

Motor kit RL-D-50-MK-C-N23XL-02



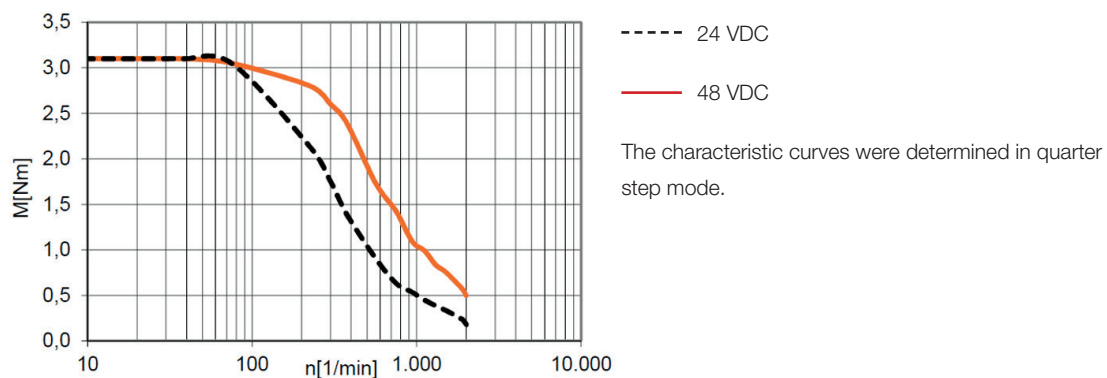
... for distance over hubs

60 (Nema23XL)

Maximum voltage	60 VDC
Nominal voltage	24-48
Nominal current	4,2 A
Holding torque	3,5 Nm
Ratchet torque	0,075 Nm
Step angle	1.8 ±5%
Resistance/phase	0.65 ±10%
Inductivity/phase	3.2 ±20%
Moment of inertia of rotor	0,84 kgcm ²
Shaft load, axial	15 N
Shaft load, radial (20 mm)	63 N

... Motor identification

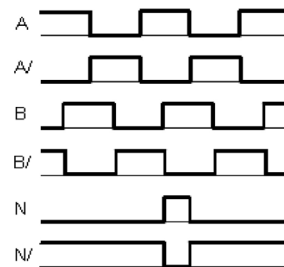
MOT-AN-S-060-035-060-M-C-AAAC



... Motor encoder

Operating voltage	5 V
Signals/rotation	500
Line driver	RS422 protocol
Zero signal/index	yes

Signal shape
(clockwise)



... Motor weights

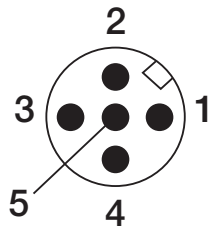
Strands	1,45 kg
Connector	1,56 kg
Encoder	1,58 kg
Encoder and brake	1,82 kg

... Operating data

CE	EMC guideline
Insulation class	B
Max. humidity	85 %
IP rating - motor housing	IP65 (shaft seal IP52), motor with stranded wires IP40
Max. allowable temperature increase	80 °C
Ambient temperature max.	+50°C
Ambient temperature min.	-10°C

... Pin assignment of stepper motor connector

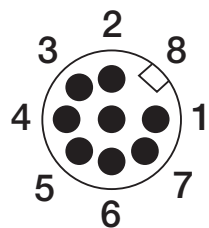
Motor size: 42, 56, 60 (Nema17, 23, 23XL)



PIN	Signal	Phase	Colour
1	A/	1	brown
2	A	1	white
3	B	2	blue
4	B/	2	black
5	PE	–	green-yellow
Housing	Shielding	–	–

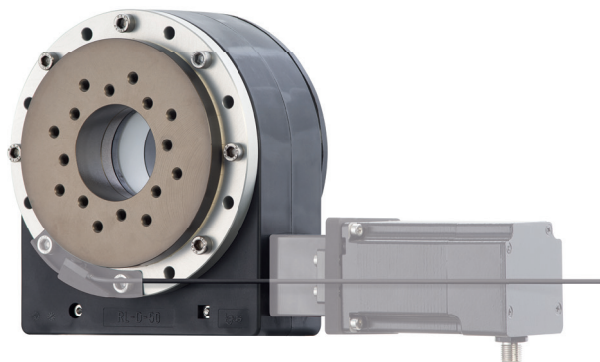
... Pin assignment encoder

Motor size: 42, 56, 60 (Nema17, 23, 23XL)



PIN	Signal	Colour
1	A	white
2	A/	brown
3	B	green
4	B/	yellow
5	0V	grey
6	N/	pink
7	N	blue
8	5V DC	red
Housing	Shielding	–

Robot joint
RL-D-50-101-48-01033

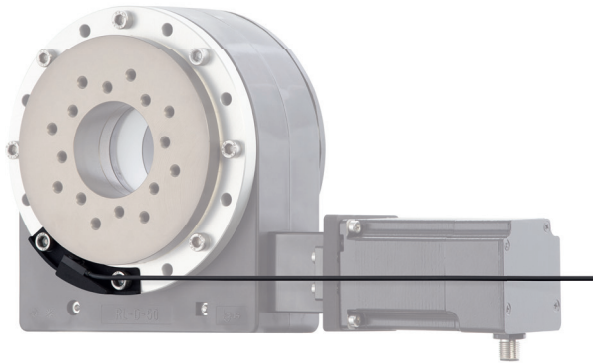


... Technical data

Max. output torque dyn., periodic use (<30% duty)	50 Nm
Max. axial stat. load in the case of horizontal mounting	< 1,200 N
Max. radial torque (permanent)	25 Nm
Efficiency	< 0.4
Transmission	48:1
Axis distance	63 mm
Backlash	< 0.5 °
Breakaway torque	< 10 cNm

Type			Dimensions [mm]		
RL-	D-	50-	101-	48-	01033
robolink [®]	Type	Installation size	Design	Reduction	Variation

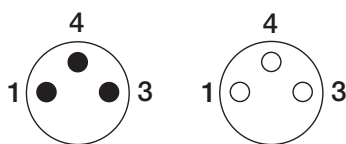
INI kit (option) RL-D-50-IK-001



... Technical data

igus® part no.	INI-AB-I-025-A-AA
Fitting	M8 x 1
Switching output	PNP
Switching function	NO (Closer)
Operating voltage	10...30 V DC
Rated operational current	100 mA
Protection class	IP67

... Pin assignment INI kit



PIN	Signal	Colour
1	24V	brown
3	0V	blue
4	Signal	black

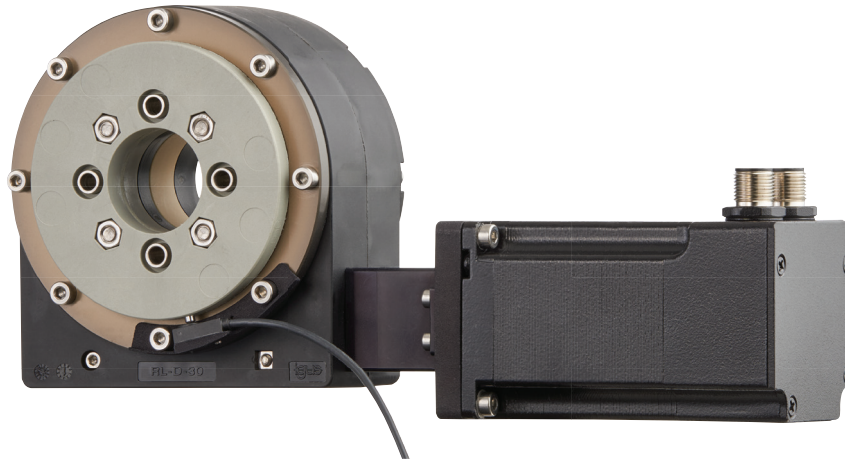


Contact:

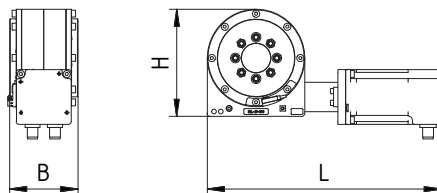
Martin Raak
Product Manager robolink®

Phone +49 2203 9649 409
Fax +49 2203 9698 409
mraak@igus.de

Component RL-D-30-A0107



Weight	2 kg
Max. output torque	20 Nm
Max. speed (at max. load)	9 rpm



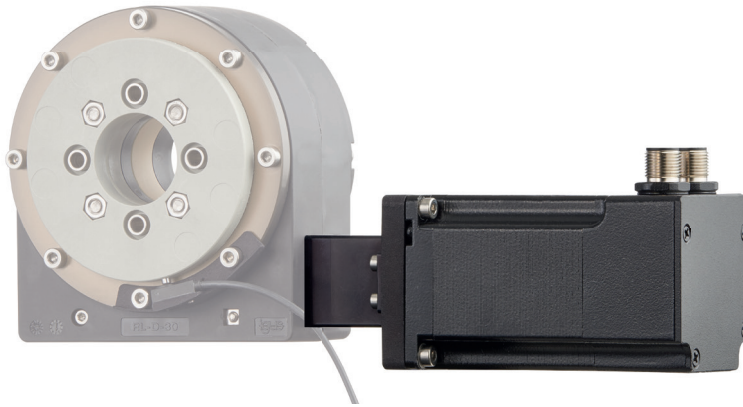
... Dimensions [mm]

B	L	H
70	240	110

... consisting of the following individual components

1. Motor kit **RL-D-30-MK-C-N23-02**
2. Robot joint **RL-D-30-101-50-01000**
3. INI kit (option) **RL-D-30-IK-001**

Motor kit RL-D-30-MK-C-N23-02



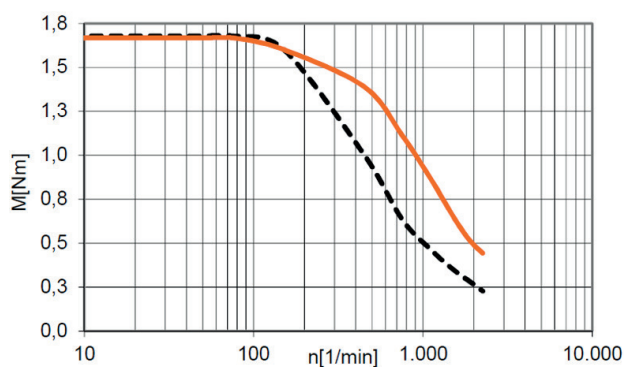
... for distance over hubs

56 (Nema23)

Maximum voltage	60 VDC
Nominal voltage	24-48 VDC
Nominal current	4,2 A
Holding torque	2 Nm
Ratchet torque	0,068 Nm
Step angle	$1.8 \pm 5\%$
Resistance/phase	$0.5 \pm 10\%$
Inductivity/phase	$2.2 \pm 20\%$
Moment of inertia of rotor	$0,48 \text{ kgcm}^2$
Shaft load, axial	15 N
Shaft load, radial (20 mm)	52 N

... Motor identification

MOT-AN-S-060-020-056-M-C-AAAC



----- 24 VDC

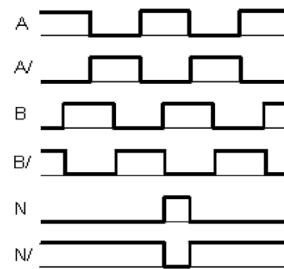
— 48 VDC

The characteristic curves were determined in quarter step mode.

... Motor encoder

Operating voltage	5 V
Signals/rotation	500
Line driver	RS422 protocol
Zero signal/index	yes

Signal shape
(clockwise)



... Motor weights

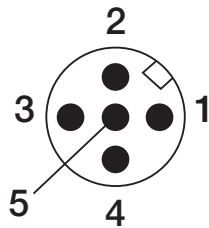
Strands	1,04 kg
Connector	1,12 kg
Encoder	1,14 kg
Encoder and brake	1,36 kg

... Operating data

CE	EMC guideline
Insulation class	B
Max. humidity	85 %
IP rating - motor housing	IP65 (shaft seal IP52), motor with stranded wires IP40
Max. allowable temperature increase	80 °C
Ambient temperature max.	+50°C
Ambient temperature min.	-10°C

... Pin assignment of stepper motor connector

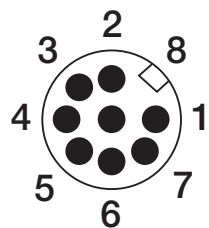
Motor size: 42, 56, 60 (Nema17, 23, 23XL)



PIN	Signal	Phase	Colour
1	A/	1	brown
2	A	1	white
3	B	2	blue
4	B/	2	black
5	PE	–	green-yellow
Housing	Shielding	–	–

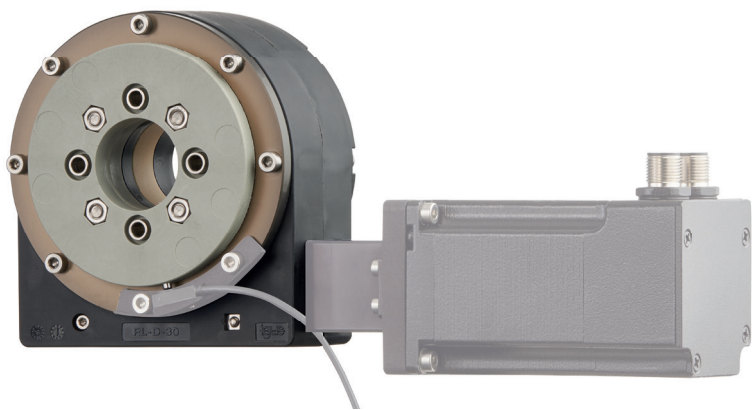
... Pin assignment encoder

Motor size: 42, 56, 60 (Nema17, 23, 23XL)



PIN	Signal	Colour
1	A	white
2	A/	brown
3	B	green
4	B/	yellow
5	0V	grey
6	N/	pink
7	N	blue
8	5V DC	red
Housing	Shielding	–

Robot joint
RL-D-30-101-50-01000

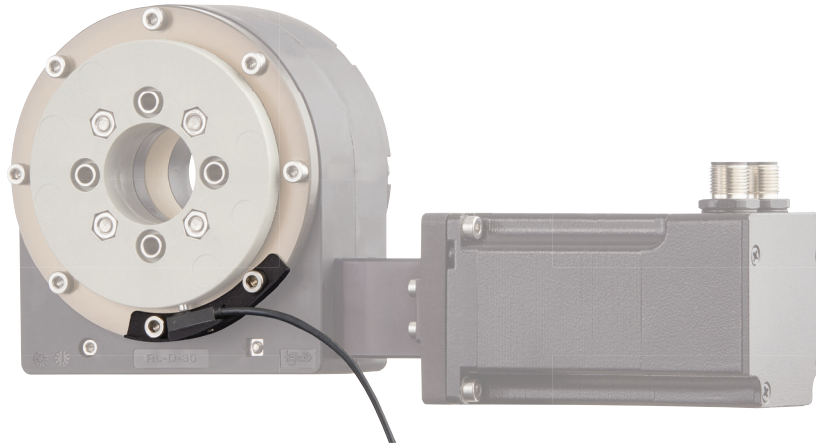


... Technical data

Max. output torque dyn., periodic use (<30% duty)	20 Nm
Max. axial stat. load in the case of horizontal mounting	< 700 N
Max. radial torque (permanent)	10 Nm
Efficiency	< 0.35
Transmission	50:1
Axis distance	40 mm
Backlash	< 0.5 °
Breakaway torque	< 7 cNm

Type			Dimensions [mm]		
RL-	D-	30-	101-	50-	01000
robolink®	Type	Installation size	Design	Reduction	Variation

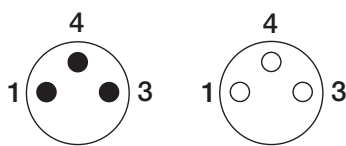
INI kit (option) RL-D-30-IK-001



... Technical data

igus® part no.	INI-AB-I-025-A-AA
Fitting	M8 x 1
Switching output	PNP
Switching function	NO (Closer)
Operating voltage	10...30 V DC
Rated operational current	100 mA
Protection class	IP67

... Pin assignment INI kit



PIN	Signal	Colour
1	24V	brown
3	0V	blue
4	Signal	black



Contact:

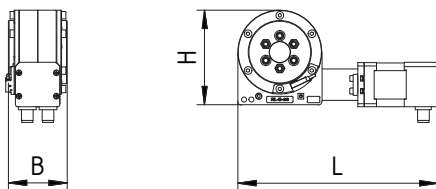
Martin Raak
Product Manager robolink®

Phone +49 2203 9649 409
Fax +49 2203 9698 409
mraak@igus.de

Component RL-D-20-A0162



Weight	0,9 kg
Max. output torque	7 Nm
Max. speed (at max. load)	12 rpm



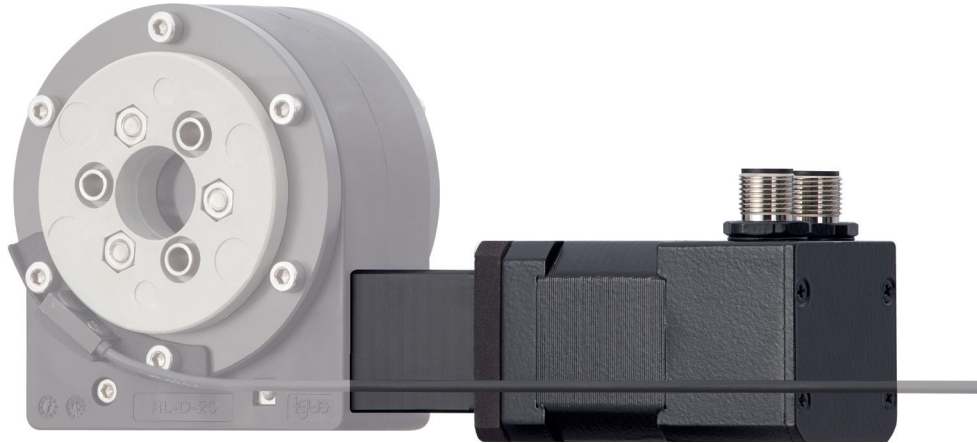
... Dimensions [mm]

B	L	H
56	191	90

... consisting of the following individual components

1. Motor kit **RL-D-20-MK-C-N17-02**
2. Robot joint **RL-D-20-101-38-01000**
3. INI kit (option) **RL-D-20-IK-001**

Motor kit RL-D-20-MK-C-N17-02



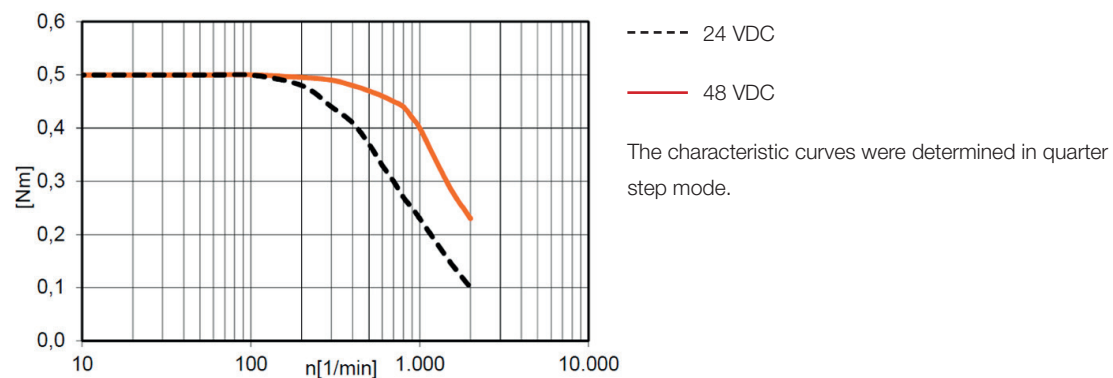
... for distance over hubs

42 (Nema17)

Maximum voltage	60 VDC
Nominal voltage	24-48
Nominal current	1,8 A
Holding torque	0,5 Nm
Ratchet torque	0,022 Nm
Step angle	1.8 ±5 %
Resistance/phase	1.75 ±10 %
Inductivity/phase	3.30 ±20 %
Moment of inertia of rotor	0,082 kgcm ²
Shaft load, axial	7 N
Shaft load, radial (20 mm)	20 N

... Motor identification

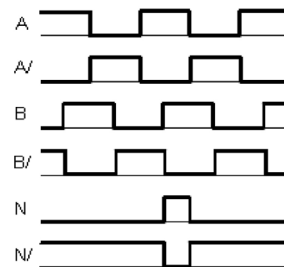
MOT-AN-S-060-005-042-M-C-AAAC



... Motor encoder

Operating voltage	5 V
Signals/rotation	500
Line driver	RS422 protocol
Zero signal/index	yes

Signal shape
(clockwise)



... Motor weights

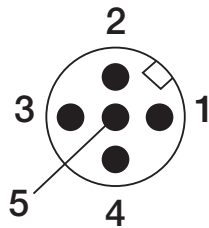
Strands	0,38 kg
Connector	0,43 kg
Encoder	0,45 kg
Encoder and brake	0,58 kg

... Operating data

CE	EMC guideline
Insulation class	B
Max. humidity	85 %
IP rating - motor housing	IP65 (shaft seal IP52), motor with stranded wires IP40
Max. allowable temperature increase	80 °C
Ambient temperature max.	+50°C
Ambient temperature min.	-10°C

... Pin assignment of stepper motor connector

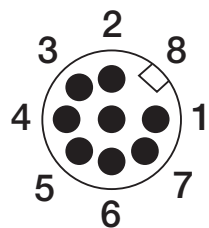
Motor size: 42, 56, 60 (Nema17, 23, 23XL)



PIN	Signal	Phase	Colour
1	A/	1	brown
2	A	1	white
3	B	2	blue
4	B/	2	black
5	PE	–	green-yellow
Housing	Shielding	–	–

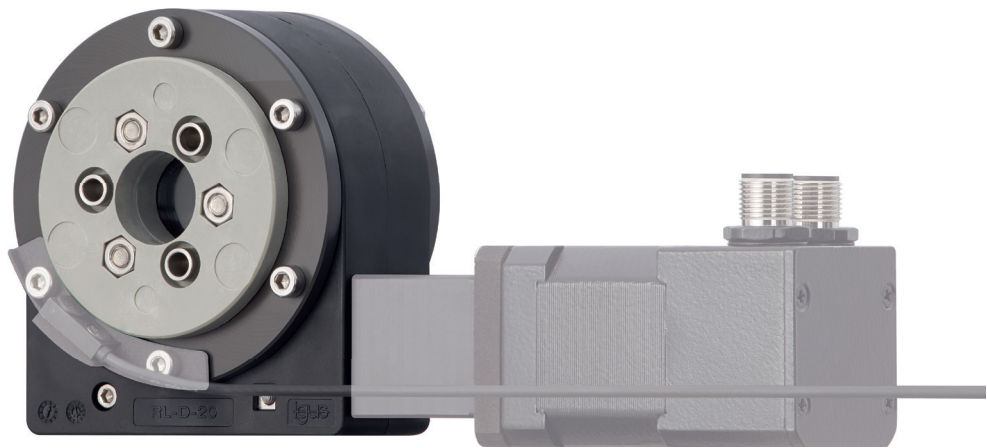
... Pin assignment encoder

Motor size: 42, 56, 60 (Nema17, 23, 23XL)



PIN	Signal	Colour
1	A	white
2	A/	brown
3	B	green
4	B/	yellow
5	0V	grey
6	N/	pink
7	N	blue
8	5V DC	red
Housing	Shielding	–

Robot joint
RL-D-20-101-38-01000

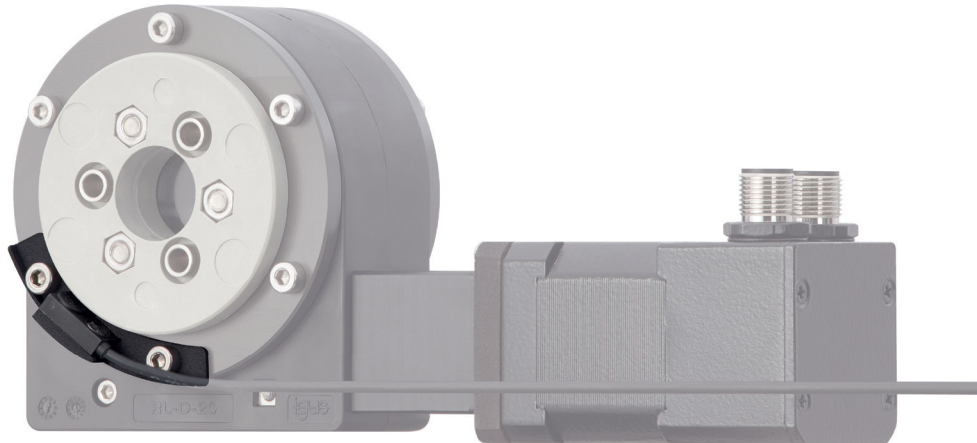


... Technical data

Max. output torque dyn., periodic use (<30% duty)	10 Nm
Max. axial stat. load in the case of horizontal mounting	< 500 N
Max. radial torque (permanent)	5 Nm
Efficiency	< 0.4
Transmission	38:1
Axis distance	31 mm
Backlash	< 0.5 °
Breakaway torque	< 5 cNm

Type			Dimensions [mm]		
RL-	D-	20-	101-	38-	01000
robolink®	Type	Installation size	Design	Reduction	Variation

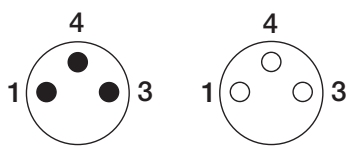
INI kit (option) RL-D-20-IK-001



... Technical data

igus® part no.	INI-AB-I-025-A-AA
Fitting	M8 x 1
Switching output	PNP
Switching function	NO (Closer)
Operating voltage	10...30 V DC
Rated operational current	100 mA
Protection class	IP67

... Pin assignment INI kit



PIN	Signal	Colour
1	24V	brown
3	0V	blue
4	Signal	black



Contact:

Martin Raak
Product Manager robolink®

Phone +49 2203 9649 409
Fax +49 2203 9698 409
mraak@igus.de