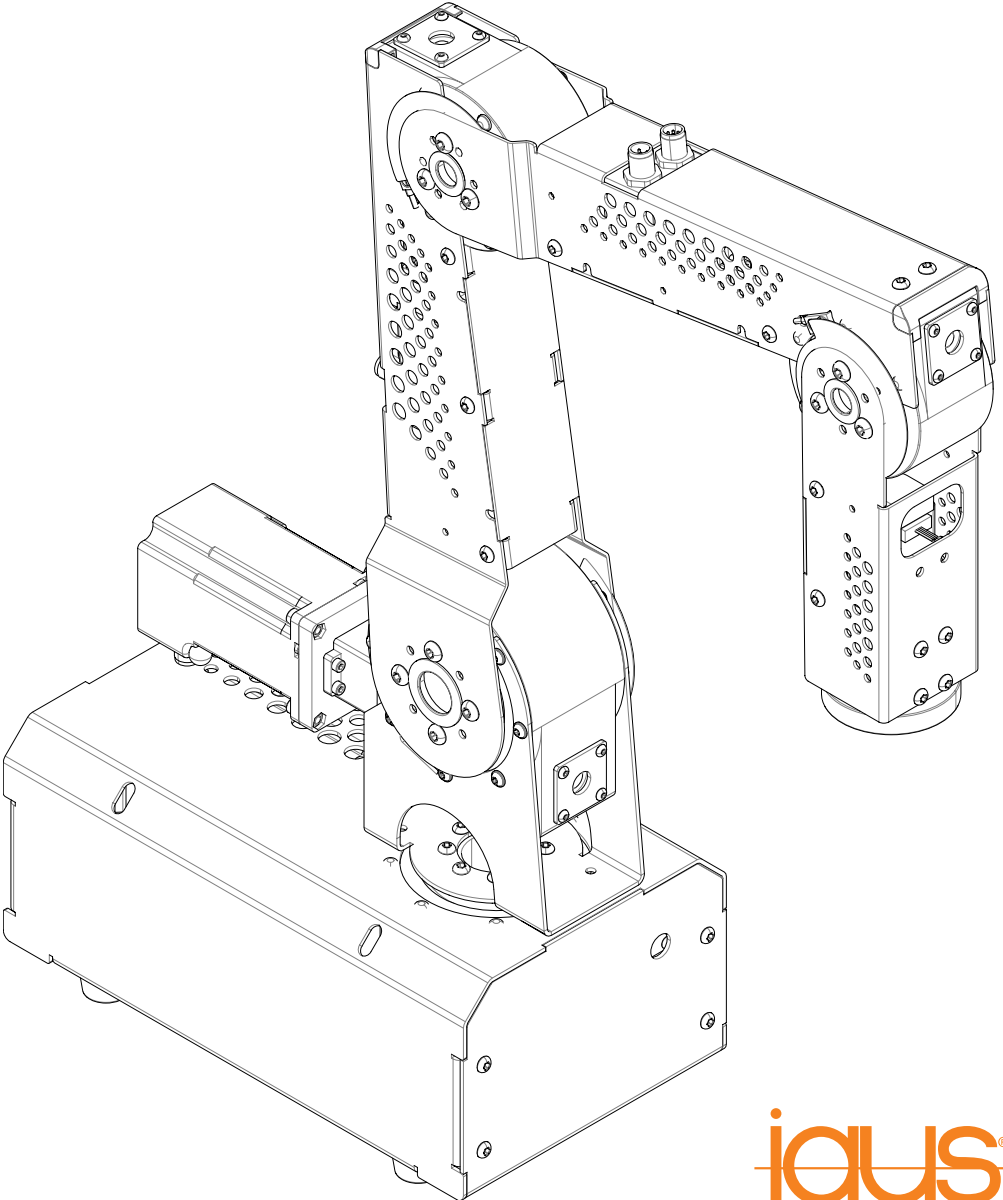


Technische Dokumentation Technical documentation  
roboLink®

# DC VERSION

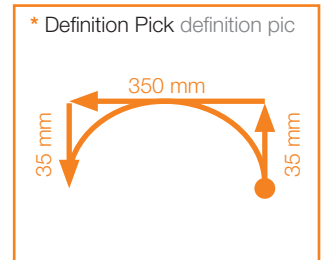


# Technische Daten technical datas

Positioniergenauigkeit accuracy	+/-1	[mm]
Reichweite reach 5 DOF 4 DOF	680 510	[mm]
Max. Nutzlast max. payload 5 DOF 4 DOF	0,5 1	[kg]
Nennreichweite nominal working range	350	[mm]
Dynamik mit dynamics with 500 [g]	min. 7	Picks/min*
Eigengewicht mass 5 DOF 4 DOF	12 11	[kg]
Mit und ohne integrierte Steuerung With and without integrated control**		
Schrittmotor NEMA23 XL Stepper motor Nema 23 XL with	max. 24/48 [V] max. 4,2 [A]	[V] [A]
Leitungslänge Handheld (optional) Stepper motor Nema 23 XL	1,5	[m]
Roboter Standardfarbe Robot standard colour	●	
Stromversorgung Power supply	230 VAC, 50-60 Hz	

Maximale Traglasten und Präzision in Abhängigkeit von Position und Geschwindigkeit.  
Sprechen Sie uns gerne an.

Max. payload and accuracy in relation to position and speed.  
Please get in contact with us.



Mehr Informationen auch zu anderen Steuerungen unter:  
<https://www.igus.de/info/robolink-guenstige-roboterarme-kaufen>

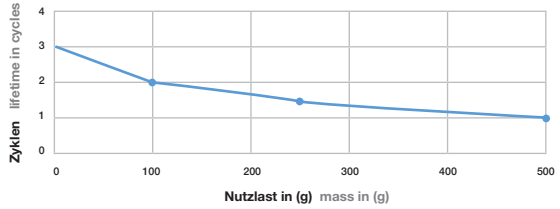
More information:  
<https://www.igus.eu/info/robotics-robolink-dci>

minimale Lebensdauer

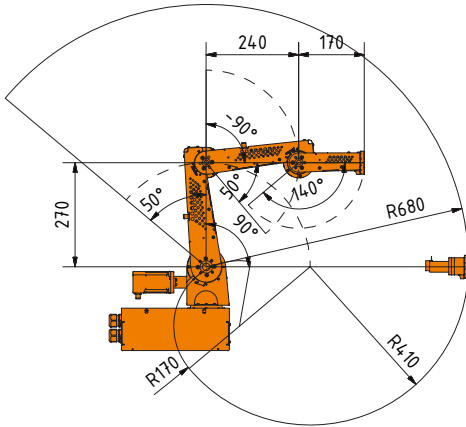
Nutzlast in (g) mass in (g)	Zyklusanzahl in mio. lifetime in millions cycle.
0	3
100	2
250	1,5
500	1

Getestete Lebensdauer mit definierten Pick unter Laborbedingungen im Nennarbeitsbereich.  
Tested lifetime for the defined pic within the nominal working range

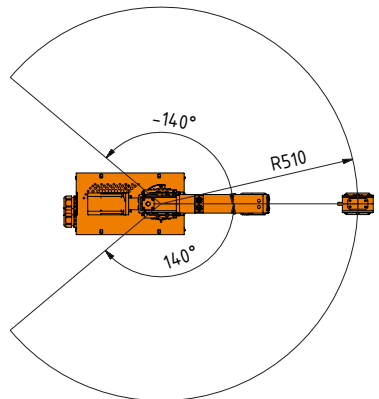
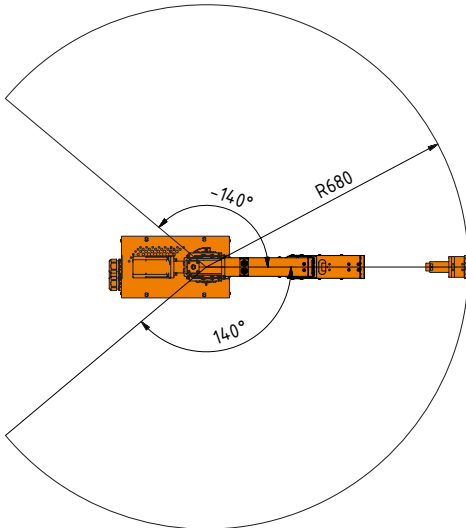
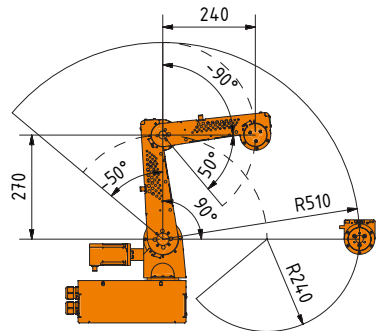
Zyklusanzahl in mio.  
lifetime in millions cycle.



5 DOF



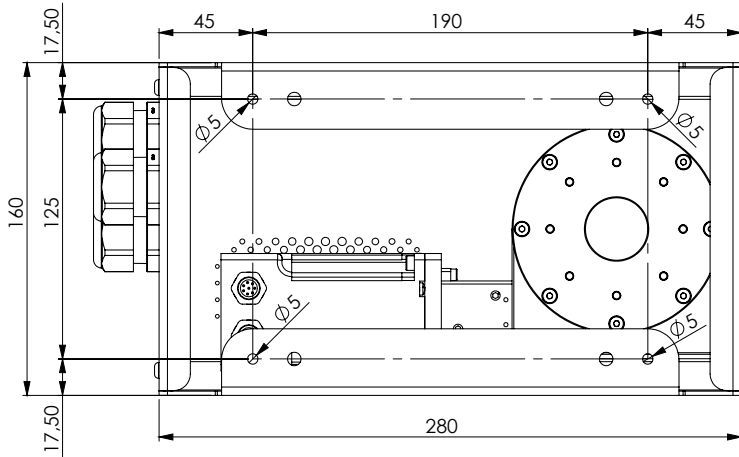
4 DOF



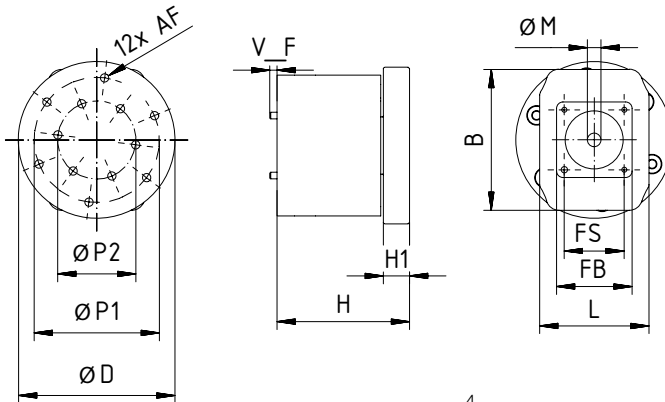
# Anschlussmaße connecting dimensions

**Artikelnummer** RL-DC-XXX  
**article number**

**Beschreibung** Roboter Bodengehäuse  
**description** robot ground case



## 5 DOF Version



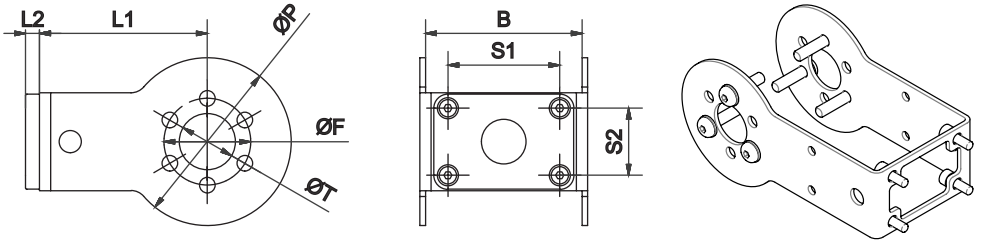
4

**Abmessung in [mm] Dimension in [mm]**

Art.-Nr.	ØD	ØP1	ØP2	AF	V_F	H	ØM	FS	FB	L	B	H1
RL-S-17-N11-00-28-020K0	60	48	30	M4 x 8	M2,5 x 2,75	50,75	5	23	29	42	54	10

# Zubehör accessories

## Greifadapter Gripping adapter 4 DOF Version



Abmessung in [mm] Dimension in [mm]

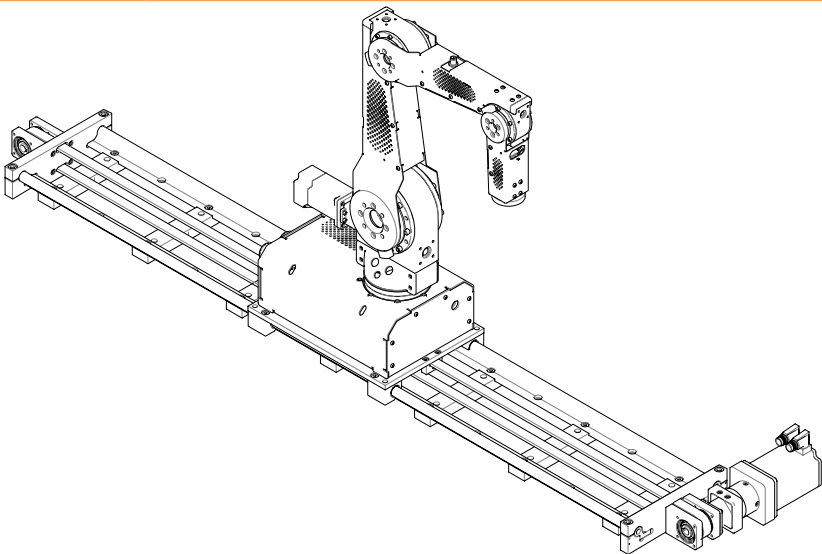
Art.-Nr.	L1	L2	S1	S2	B	ØP	ØF	ØT
RL-DC-20-GRI-90-01-NA*	90	5	40	24	56	60	31	20

\*Anschlusselement für 4 DOF robotlink

## Linearachse für Roboter Linear system for robot

**Artikelnummer** ZLW-S-4811999-180511  
**article number**

**Beschreibung** Linearachse zur Positionierung der Roboterkinematik, basierend auf ZLW-20200, Zahnriemenachse mit Motor und Getriebe, NEMA 34 mit Encoder. Hublänge bis zu 5.500 [mm]  
**description** Linear system for robot positioning, based on ZLW-20200 , Tooth-belt axis with gear and NEMA 34 stepper motor, stroke up to 5.500 [mm]

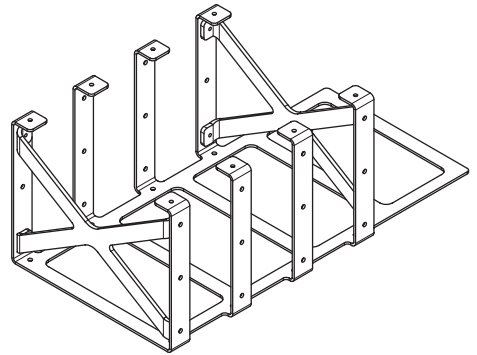
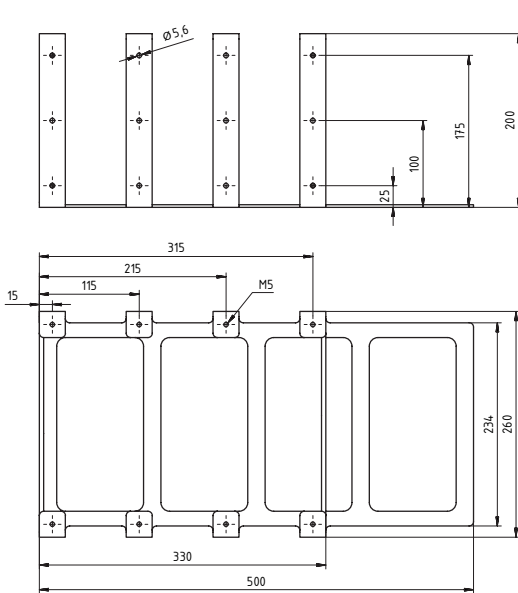


# Zubehör Accessories

## Unterbau für robolink DP Base unit for robolink DP

**Artikelnummer** RL-DP-5532S-BX  
**Part No.**

**Beschreibung** Unterbau für Tisch Montage robolink  
**Description** Base unit for table mounting







RL-D-20-HH-01

2x



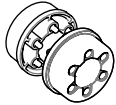
RL-D-20-TT-KL-AR

1x



NOR-20959

2x



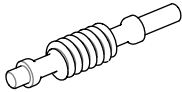
RL-D-20-SRA-KL-RR

2x



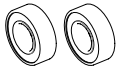
RL-D-WW-31-38-A180-AA

1x



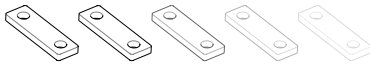
RL-D-WS-31-38-AA

1x



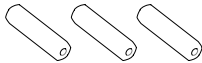
NOR-20947

2x



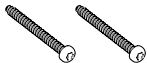
NOR-20629

6x



RL-D-20-DB-30-01

3x



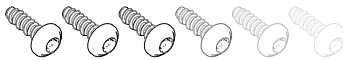
NOR-20140

2x



RL-MAT0155

12x



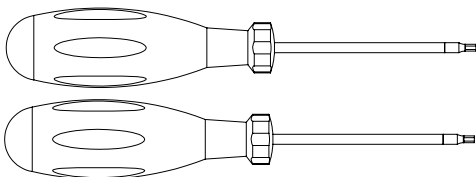
NOR-20136

12x



NOR-20646

12x

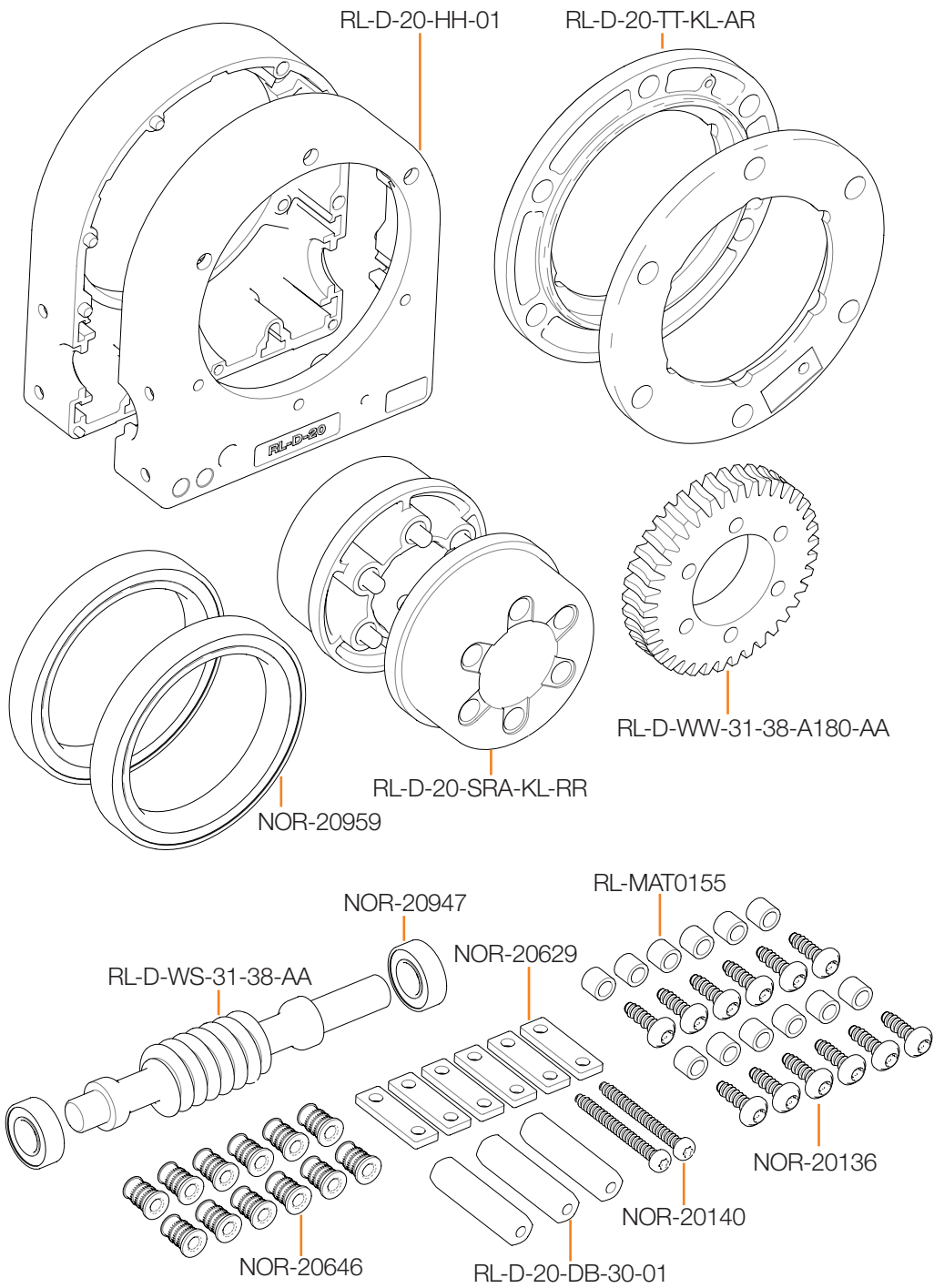


TX10

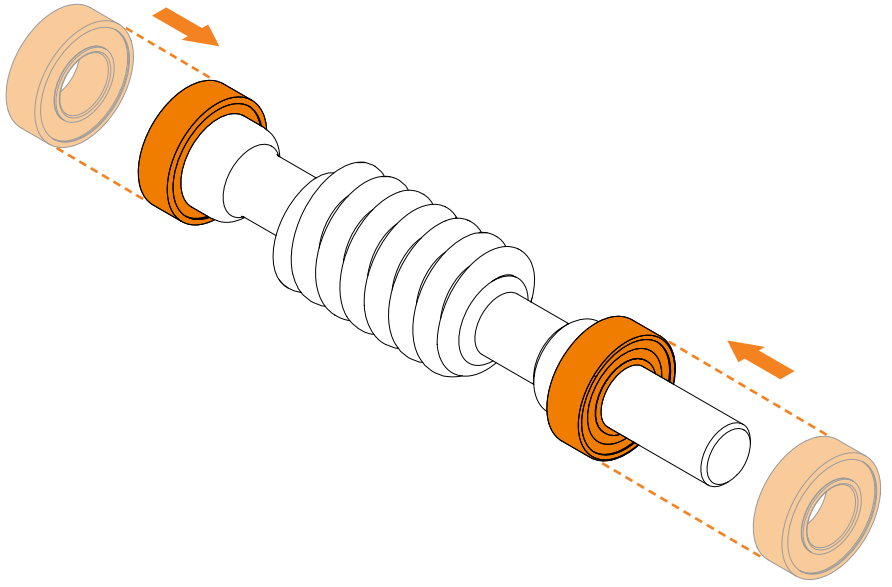
TX15



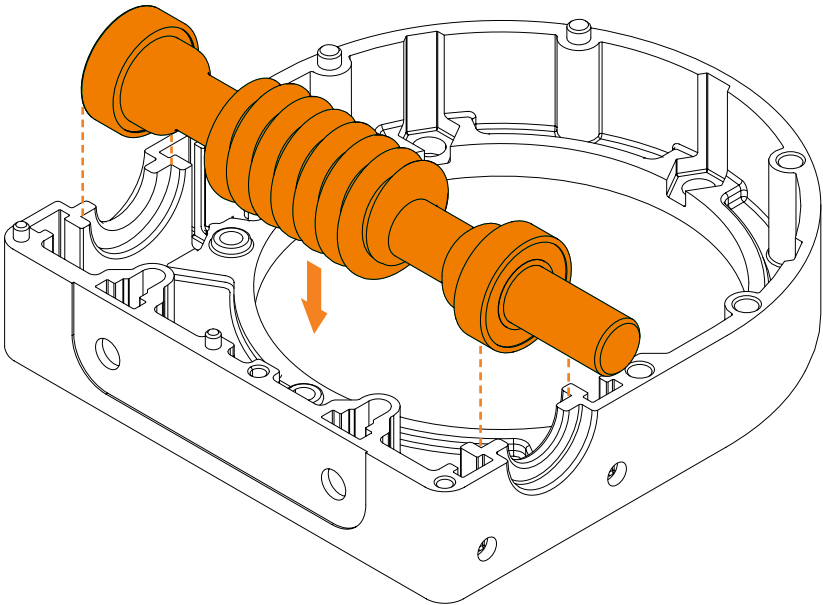




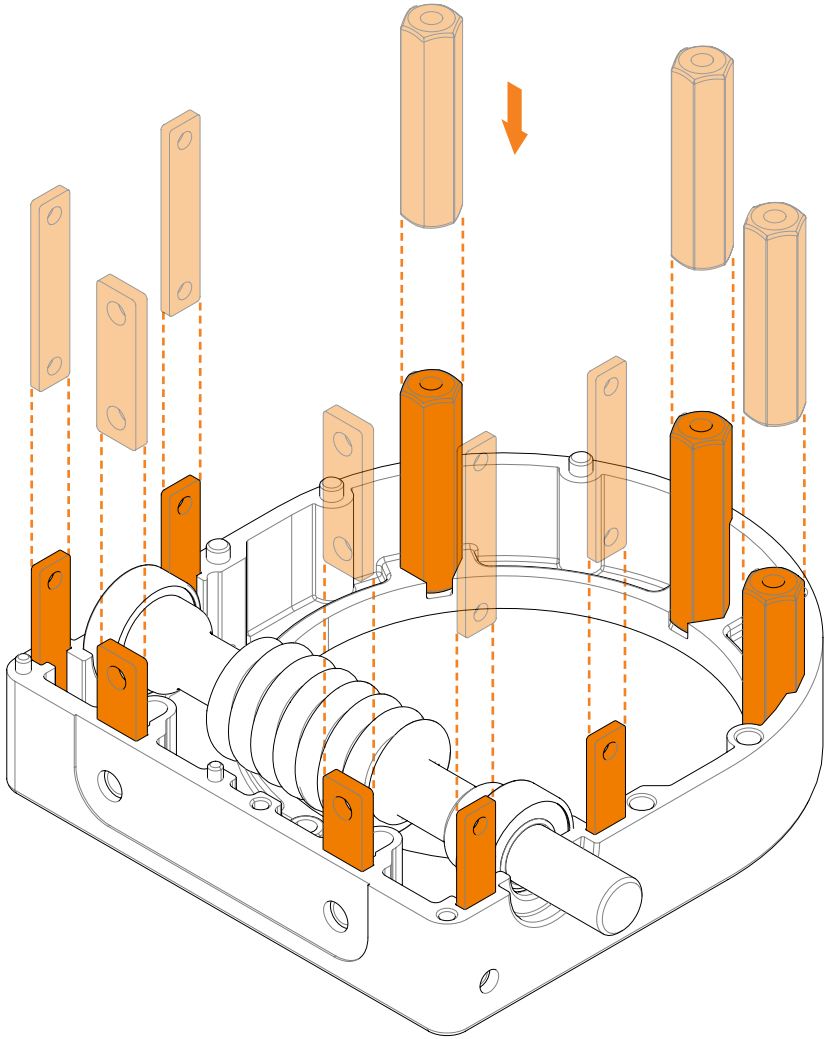
1



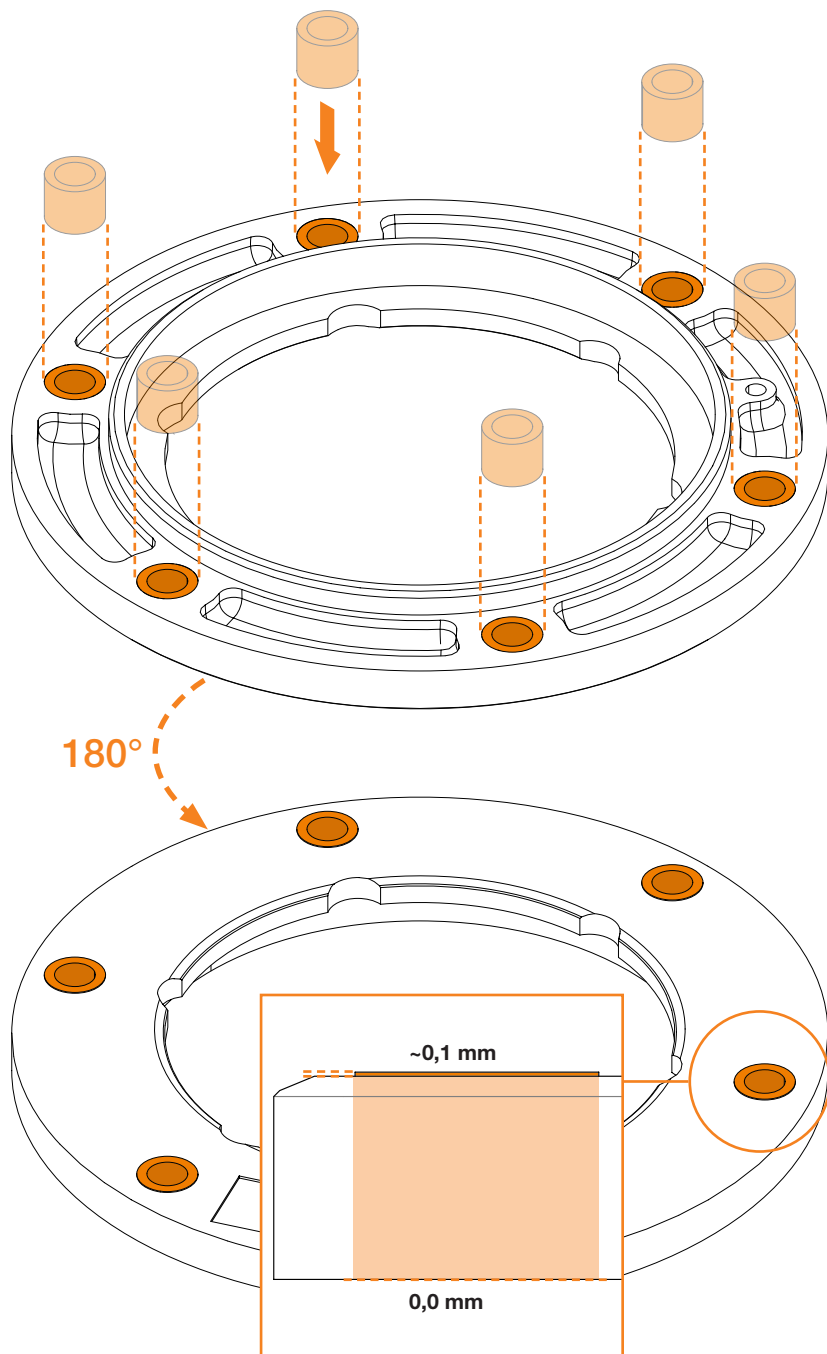
2



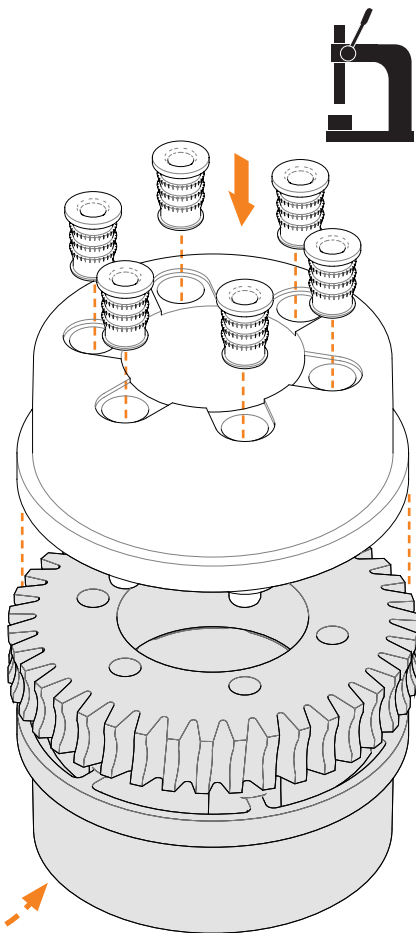
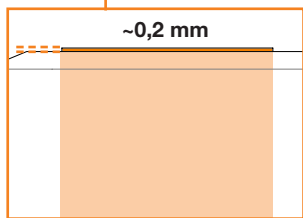
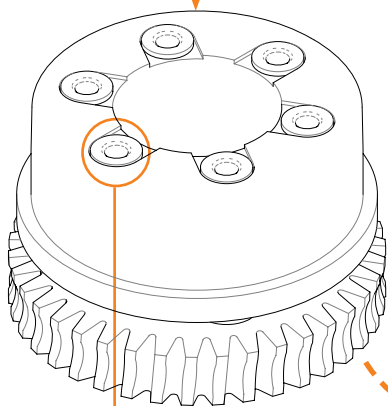
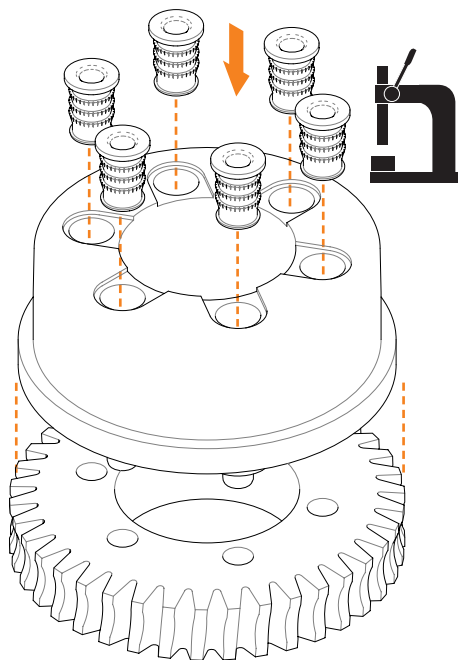
3



4



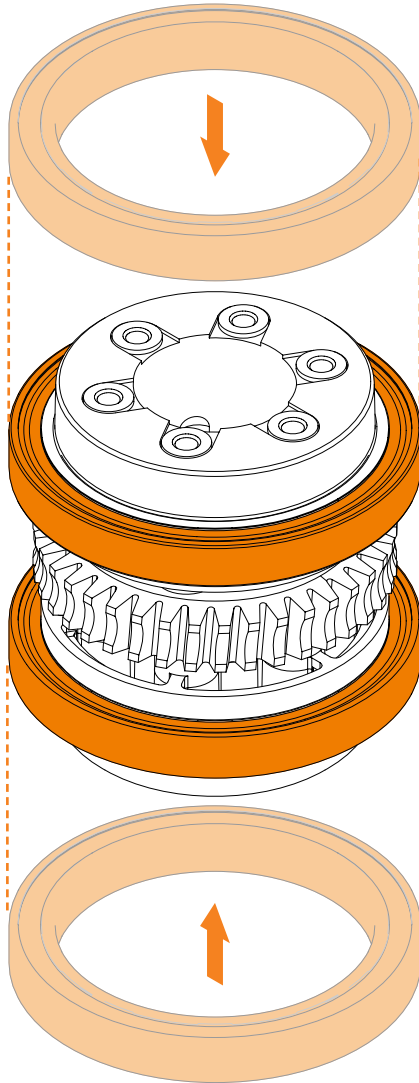
5



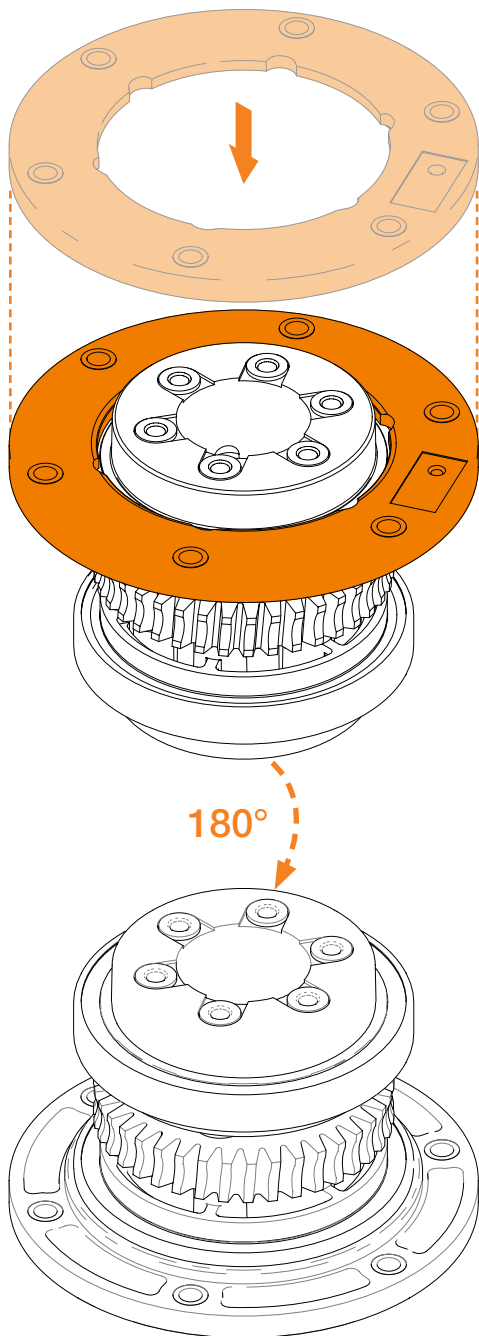
$180^\circ$



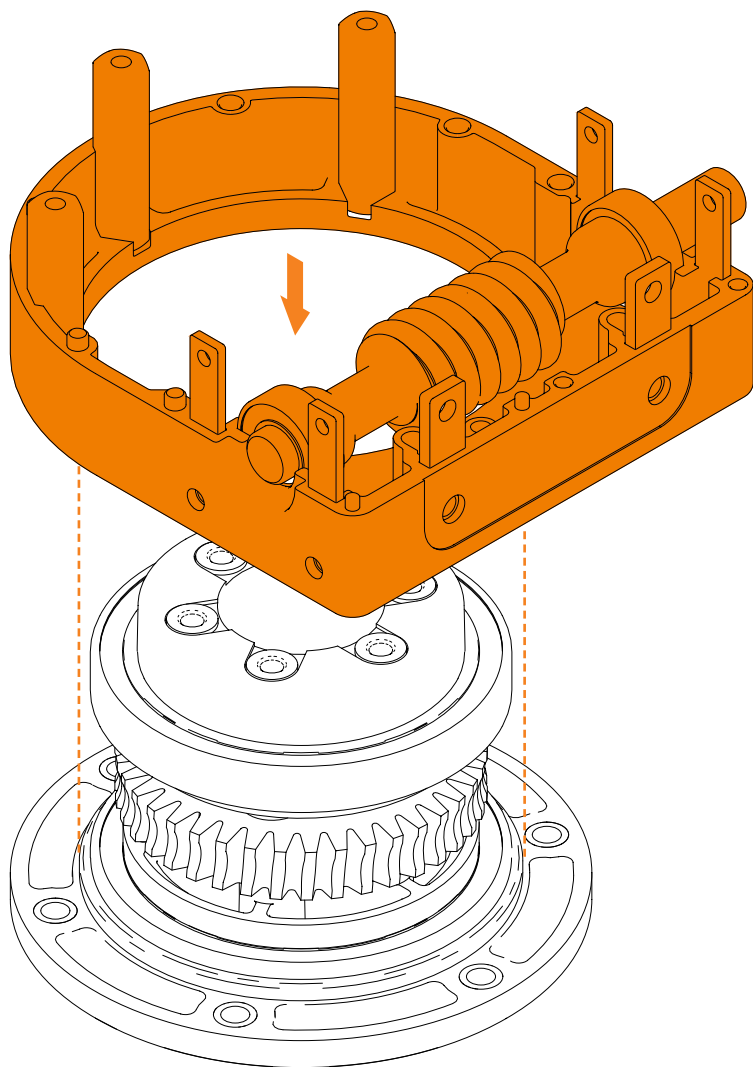
**Einpresshilfe nutzen**  
Use press-in aid



7

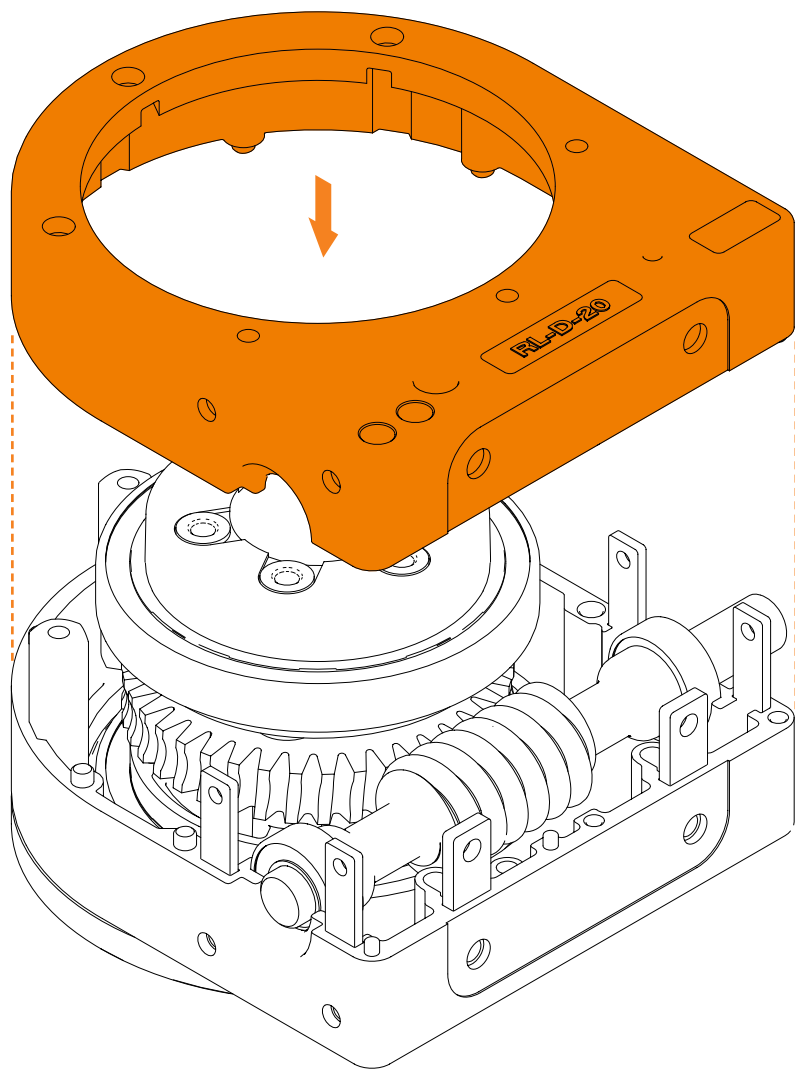


8

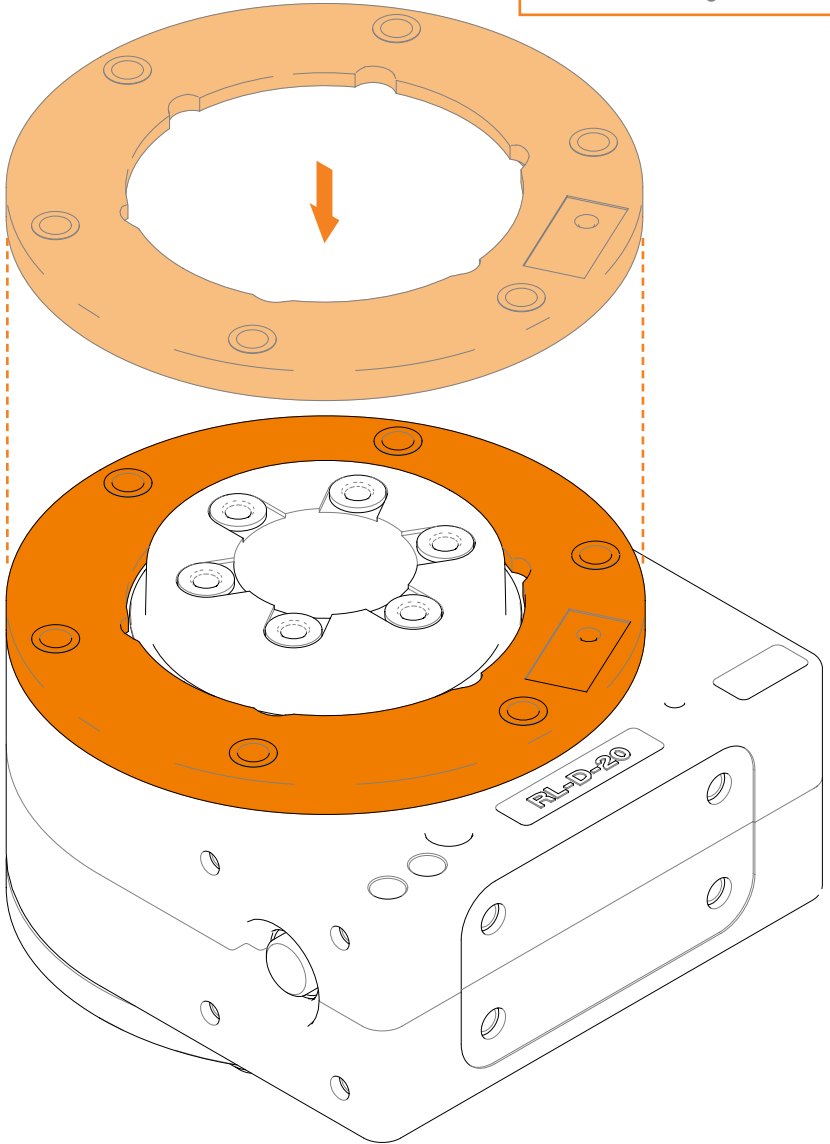
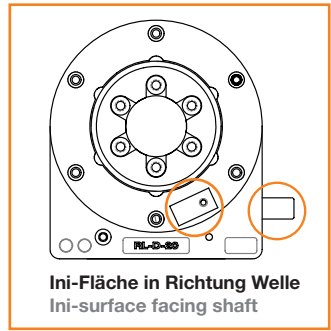




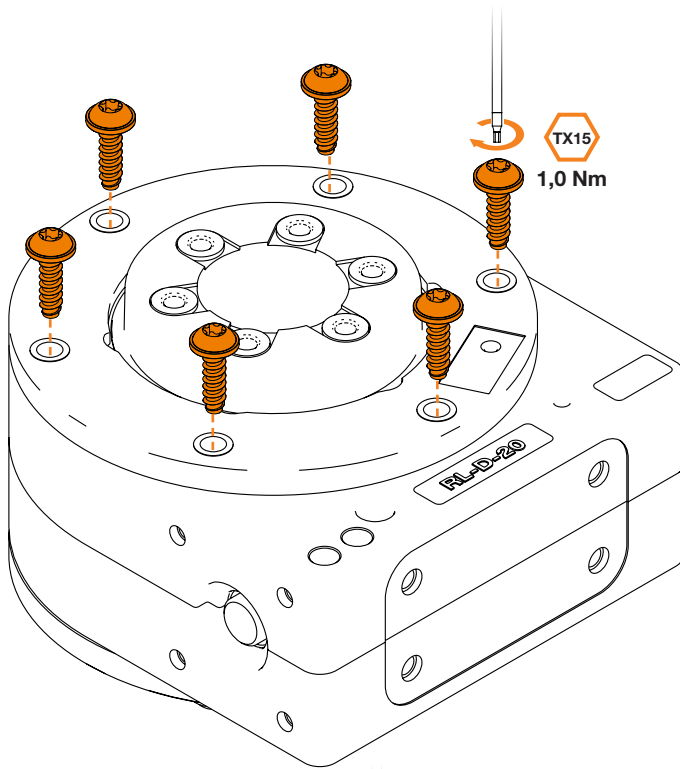
9



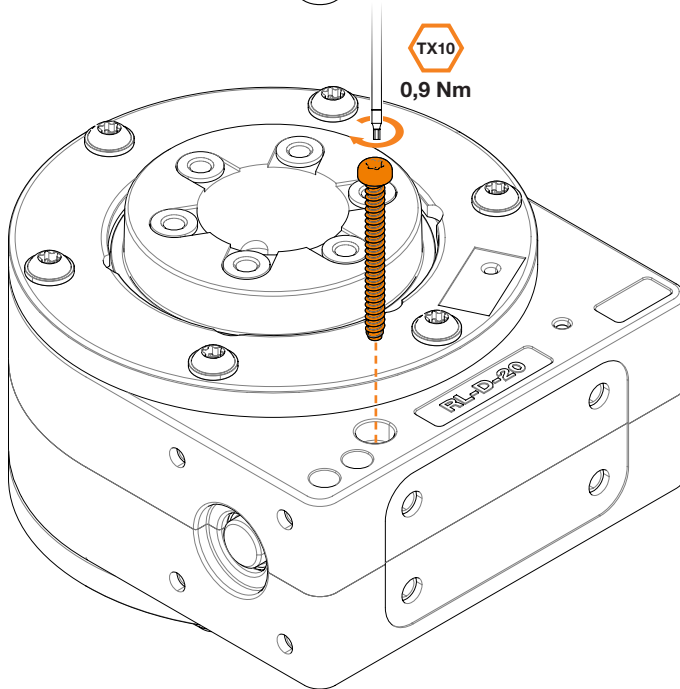
10



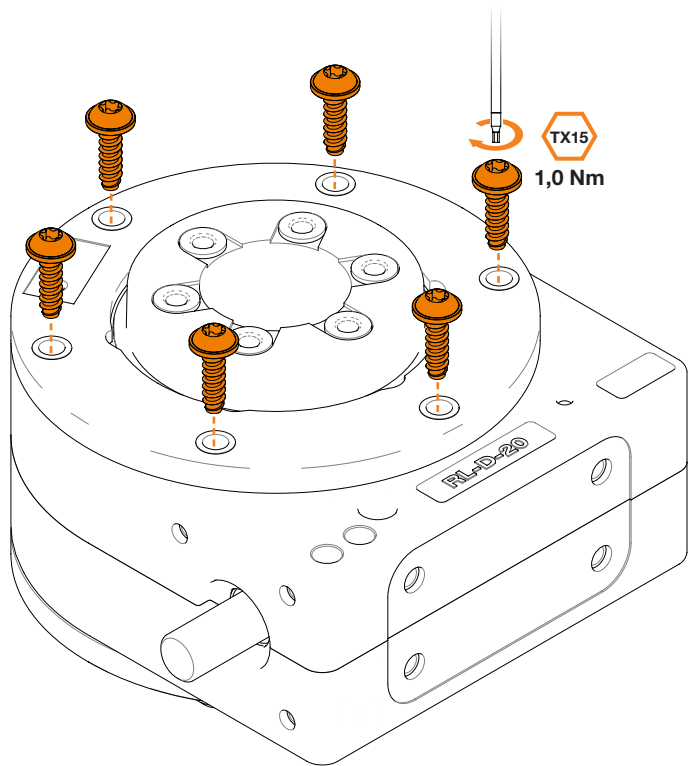
11



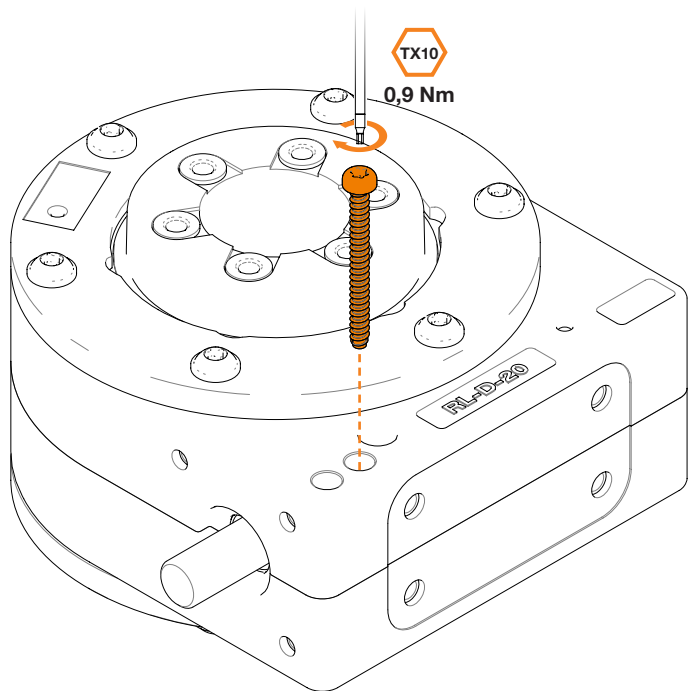
12



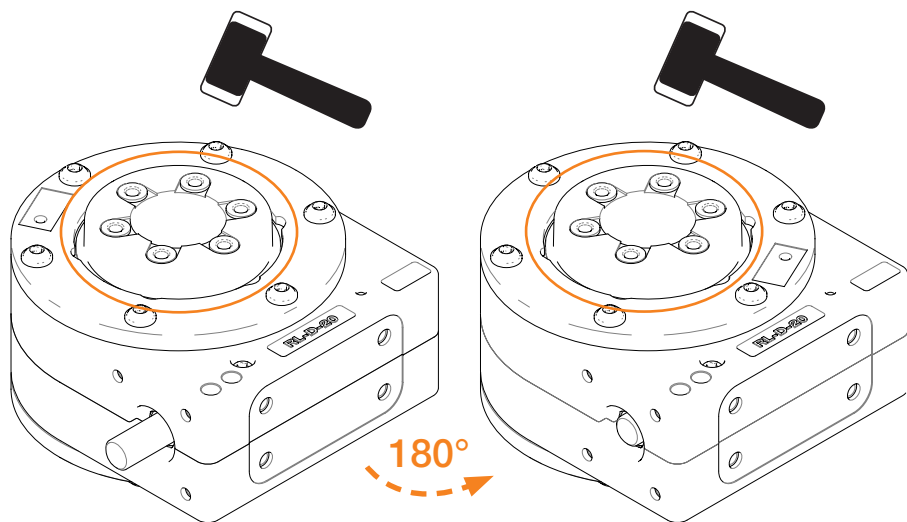
13



14

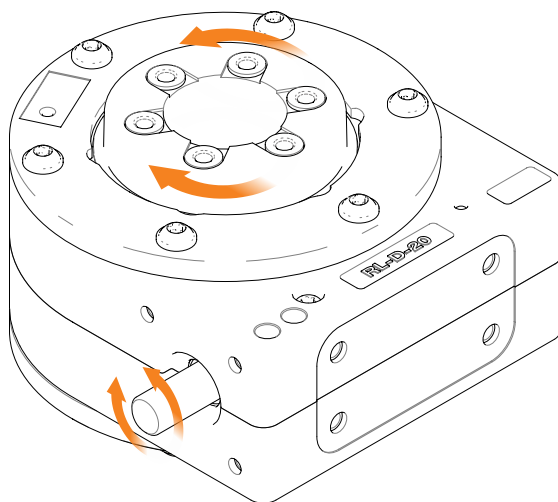


15



control

16









**iglus® GmbH**  
**Spicher Str. 1a**  
**51147 Köln Cologne**  
**Tel. +49 2203 9649-145**  
**Fax +49 2203 9649-334**  
**info@iglus.de**  
**www.iglus.de**  
**www.iglus.eu**

**© iglus® GmbH**

Herausgeber ist die iglus® GmbH, Deutschland  
Published by iglus® GmbH, Germany  
MAT0074624.25 Stand Issue 11/2019  
Technische Änderungen vorbehalten  
Subject to technical alterations