

Soft Gripper Development Kit 1.1



ACU2-B



BMC-20802[P]





扫一扫看视频

BMC-20802[P]

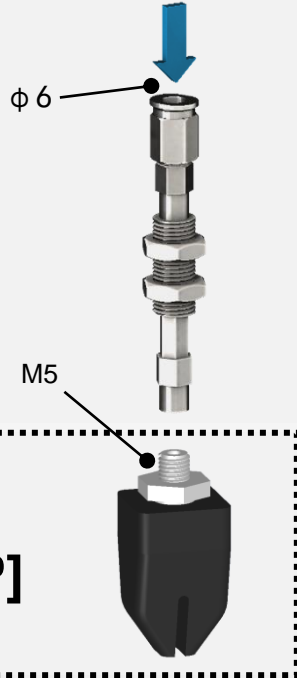
免费3D图库下载

Product Features

- It can be installed in the straight inlet **connection module [CM]** series or the side inlet **flange connection module [FCM]** series
- You can choose straight or side type
- Fingertip open under positive pressure and clamped under negative pressure. It is suggested to be used with Rochu controller. Fingertip distance G can be adjusted by working positive pressure
- Beak **B-20802[P]** can be replaced separately

Straight Fitting

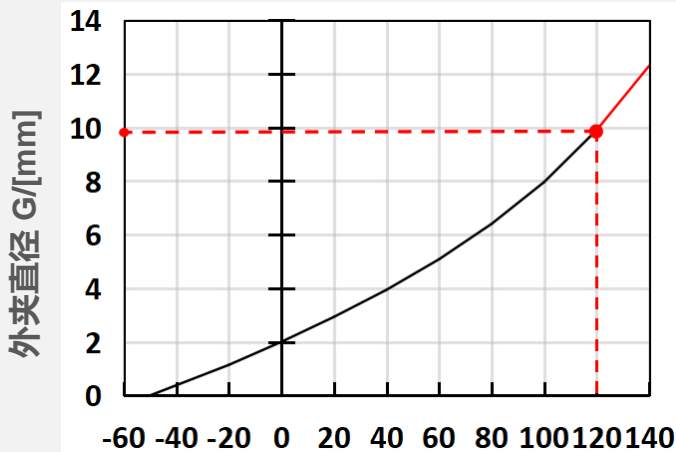
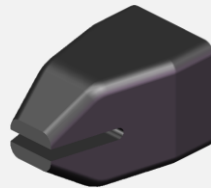
Connection Module
CM-S04



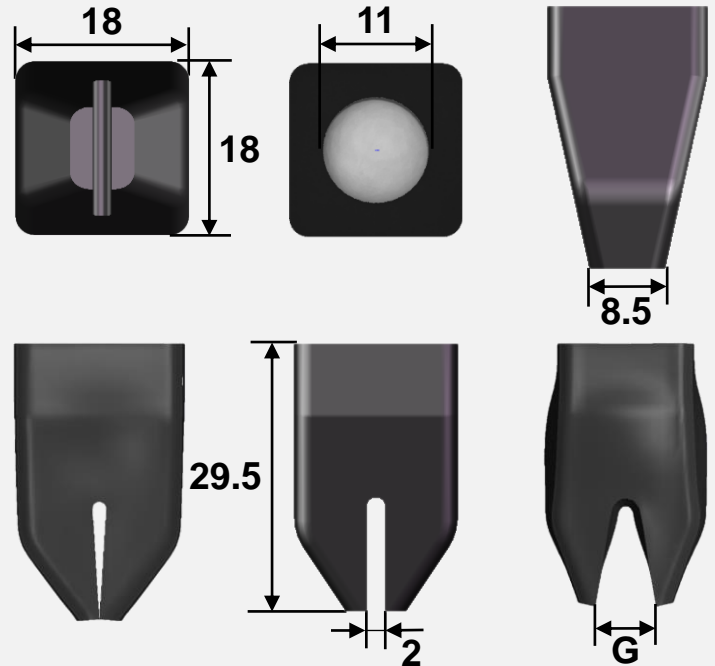
Beak Module
BMC-20802[P]

Soft Beak [B]
B-20802[P]

replaceable



*Working pressure P [kPa] (safe limit + 120kPa)



Parameter

Name:	B-20802[P]	Fitting diameter:	11mm	Weight:	6.1g	Max Load:	15g	force:	0.15N
Max Frequency:	300 times/min	Precision:	0.05mm	Safe pressure:	+120kPa	Life time :	1.5 million times*		

*According to the working pressure in the use scene and the surface roughness of object, it is recommended to use Rochu control unit and the working pressure should not exceed the safe working pressure range.

B

柔喙

ACU2-B Compact Control Unit

Best couple for desk Robot

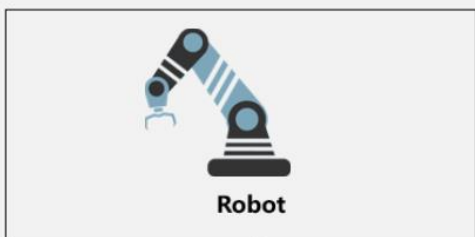


Easy drive

Plug and play, Compact and Convenient

Connect Method

Auto control



Control Unit



ACU2-B

Gripper Action

Vacuum

Atmosphere Positive pressure



Low noise pneumatic way

Less than 47dB



Standard



Parameter

Model:	ACU2-B
Power:	18W
Voltage:	24V
Pressure:	-85~100kPa
Positive pressure flow:	4L/min
Negative pressure flow:	4L/min
Size:	158×120×75 mm
Weight:	980g
Shell material:	Anodic oxidation of aluminum alloy