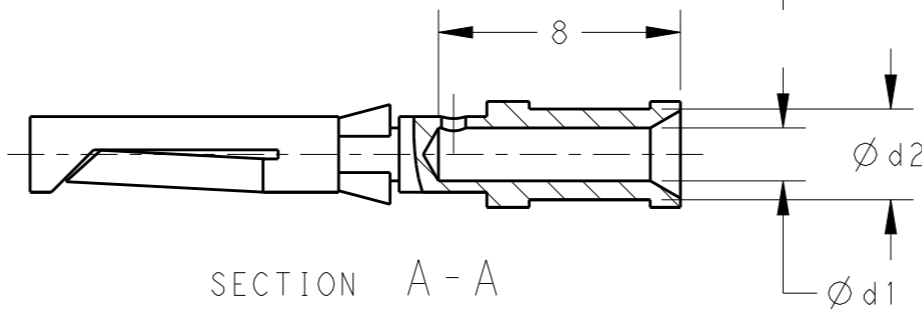
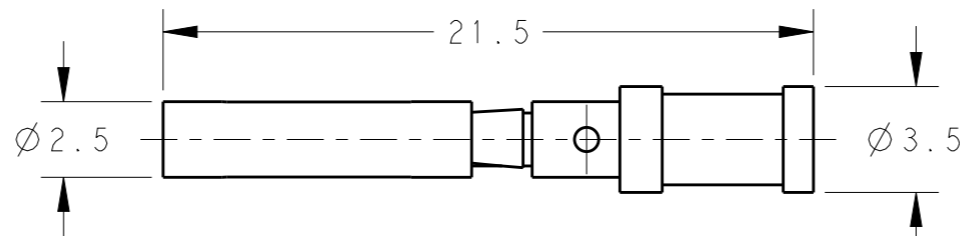
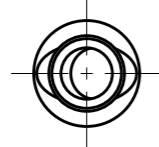
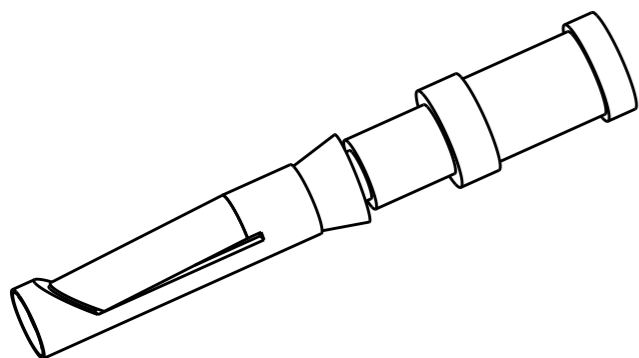


THIS DRAWING IS UNPUBLISHED. RELEASED FOR PUBLICATION 20
 © COPYRIGHT 20 BY - ALL RIGHTS RESERVED.

REVISIONS					
P	LTR	DESCRIPTION	DATE	DWN	APVD
	A	INITIAL	22NOV2014	DW	CW
	A1	ECR-15-004312	19MAR2015	DW	CW
	A2	ECR-15-010519	20JUN2015	DW	CW

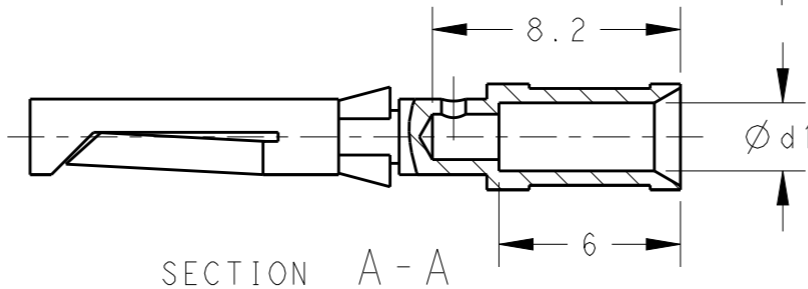
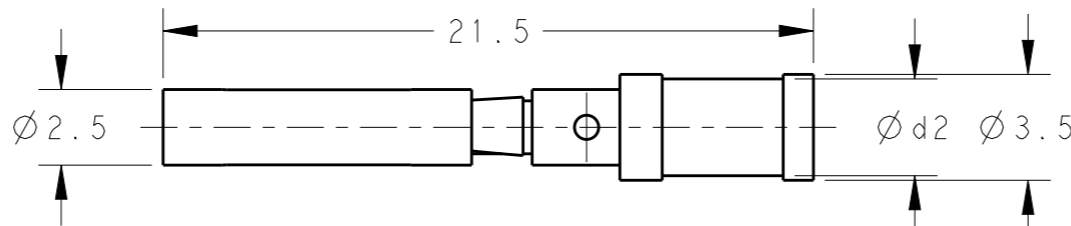
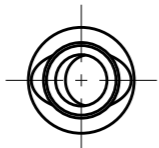


1) $\phi d1 = 0.90, 1.10, 1.30, 1.45, 1.75$

NOTES:
 1. TECHNICAL CHARACTERISTICS:
 SOCKET CONTACT MATERIAL: BRASS
 SURFACE PLATING:
 SILVER PLATING: $\geq 2\mu m$
 GOLD PLATING: $\geq 0.75\mu m$
 CONTACT RESISTANCE: $\leq 5 m\Omega$
 WIRE RANGE: 0.14-2.5 mm² (26-14 AWG)
 OPERATION TEMPERATURE: -40-+125°C

注释:
 1. 技术参数:
 母针材料: 黄铜
 表面电镀:
 镀银: $\geq 2\mu m$
 镀金: $\geq 0.75\mu m$
 接触电阻: $\leq 5 m\Omega$
 接线范围: 0.14-2.5 mm² (26-14 AWG)
 工作温度: -40-+125°C

2) $\phi d1 = 2.25$



	PART NUMBER		d1	d2	WIRE GAUGE		STRIPPING LENGTH (mm)
	SILVER PLATING	GOLD PLATING			MM ²	AWG	
	SOCKET CONTACT	T2020002002-000	T2020012002-000	0.90	2.55	0.14-0.37	
	T2020002005-000	T2020012005-000	1.10	2.60	0.5	20	
	T2020002008-000	T2020012008-000	1.30	2.60	0.75	18	
	T2020002010-000	T2020012010-000	1.45	2.60	1.0	18	
	T2020002015-000	T2020012015-000	1.75	3.00	1.5	16	
	T2020002025-000	T2020012025-000	2.25	3.20	2.5	14	6

THIS DRAWING IS A CONTROLLED DOCUMENT.

DIMENSIONS: mm	TOLERANCES UNLESS OTHERWISE SPECIFIED:
	0 PLC ±-
	1 PLC ±-
	2 PLC ±-
	3 PLC ±-
	4 PLC ±-
	ANGLES ±-
MATERIAL	FINISH
-	-

DWN	22NOV2014
David Wang	
CHK	22NOV2014
Chris Wang	
APVD	22NOV2014
Xiang Xu	
PRODUCT SPEC	108-137042
APPLICATION SPEC	114-137042
WEIGHT	-
Customer Drawing	

STE TE Connectivity

NAME: CDF/DDF HD/HDD SOCKET CONTACT

SIZE	CAGE CODE	DRAWING NO	RESTRICTED TO
A3	00779	©-T20200X20XX000	-

SCALE: 4:1 SHEET 1 OF 1 REV A2