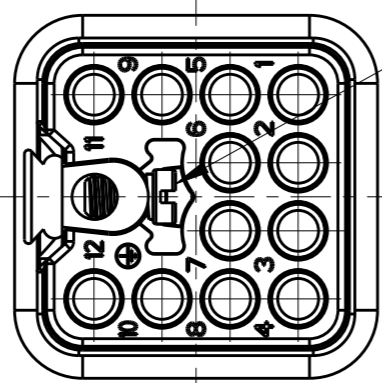


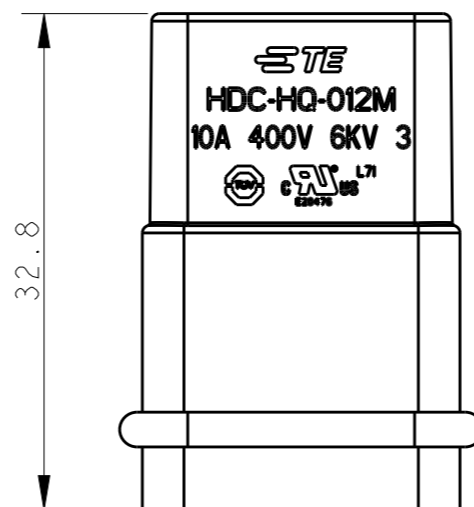
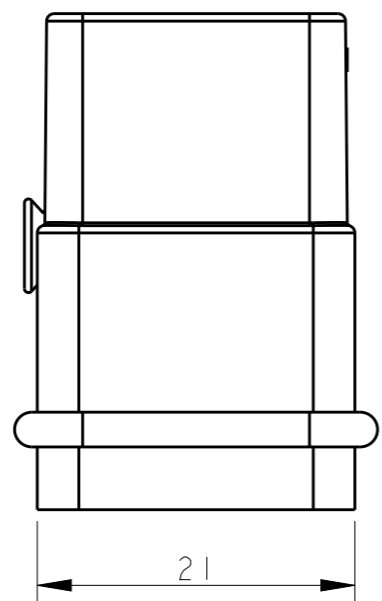
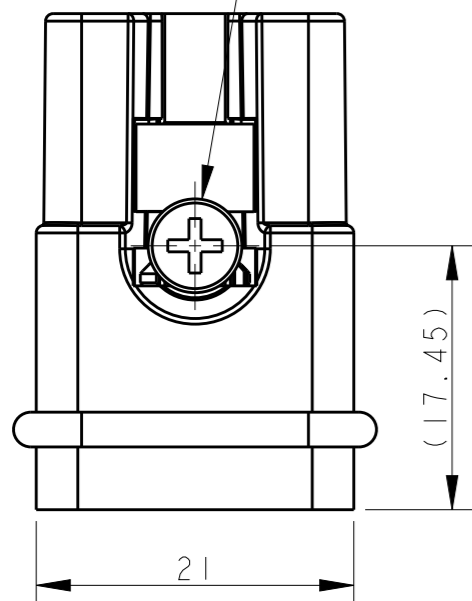
REVISIONS

P	LTR	DESCRIPTION	DATE	DWN	APVD
A		INITIAL RELEASE	02APR2015	DL	CW
B		ECR-15-014706	10OCT2015	DL	CW
BI		ECR-15-016505	11NOV2015	DL	CW
C		ECR-17-007409	25MAY2017	DL	CW



M3 SCREW, RECOMMENDED
TIGHTENING TORQUE 0.5Nm
M3螺丝, 推荐扭力矩为0.5Nm

M3 SCREW, RECOMMENDED
TIGHTENING TORQUE 0.5Nm
M3螺丝, 推荐扭力矩为0.5Nm

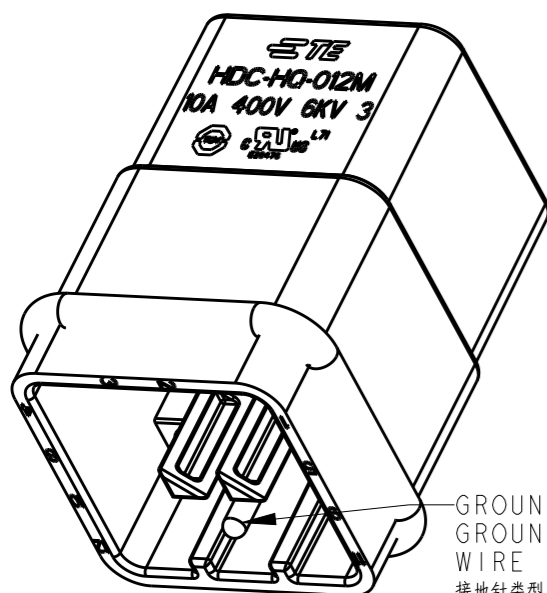


NOTES:

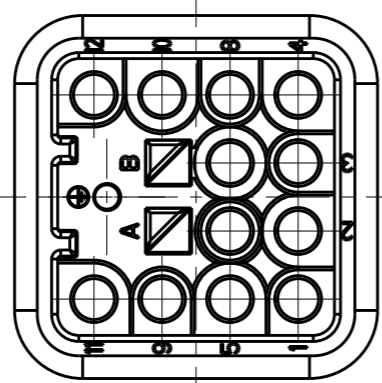
- TECHNICAL CHARACTERISTICS:
INSULATION MATERIAL: PC
RATED VOLTAGE: 400 V
RATED CURRENT: 10 A
INSULATION RESISTANCE: $\geq 400M\Omega$
RATED IMPULSE VOLTAGE: 6 KV
POLLUTION DEGREE: 3
FLAMMABILITY: UL94V-0
MATING CYCLES: 500 CYCLES
WIRE RANGE: 0.14-2.5 mm² (26-14 AWG)
CONTACT TYPE: CRIMP CONTACT
- CONTACT NEED TO BE ORDERED SEPARATELY.
(ORDER No. REFER TO DRAWING: T20200X10XX000)

注释:

- 技术参数:
绝缘材料: PC
额定电压: 400V
额定电流: 10A
绝缘电阻: $\geq 400M\Omega$
额定脉冲电压: 6KV
污染等级: 3
阻燃等级: UL94V-0
插拔次数: 500次
接线范围: 0.14-2.5 mm² (26-14 AWG)
接线类型: 冷压接
- 端子需要单独订购.
(订货号参考图面: T20200X10XX000)



GROUNDING CONTACT TYPE: SCREW CONTACT
GROUNDING CONTACT FINISH: SILVER PLATED
WIRE RANGE: 2.5mm² (AWG14)
接地针类型: 螺丝压接
接地针表面处理: 镀银
接线范围: 2.5mm² (AWG14)



T2080122101-000	HQ-012-M	HQ-012 MALE INSERT HQ-012 公插
PART NUMBER 料号	PART DESCRIPTION 描述	

THIS DRAWING IS A CONTROLLED DOCUMENT.

DIMENSIONS:	TOLERANCES UNLESS OTHERWISE SPECIFIED:
mm	
	0 PLC ±-
	1 PLC ±-
	2 PLC ±-
	3 PLC ±-
	4 PLC ±-
	ANGLES ±-
MATERIAL	FINISH
-	-
-	-

DWN	31MAR2015
DAVID LI	
CHK	31MAR2015
CHRIS WANG	
APVD	31MAR2015
XU XIANG	
PRODUCT SPEC	108-137114
APPLICATION SPEC	108-137114
WEIGHT	-
CUSTOMER DRAWING	

 TE Connectivity		NAME	
		HQ-012-M	
SIZE	CAGE CODE	DRAWING NO	RESTRICTED TO
A3	-	©-T2080122101000	-
SCALE		SHEET	REV
2:1		1 OF 1	C