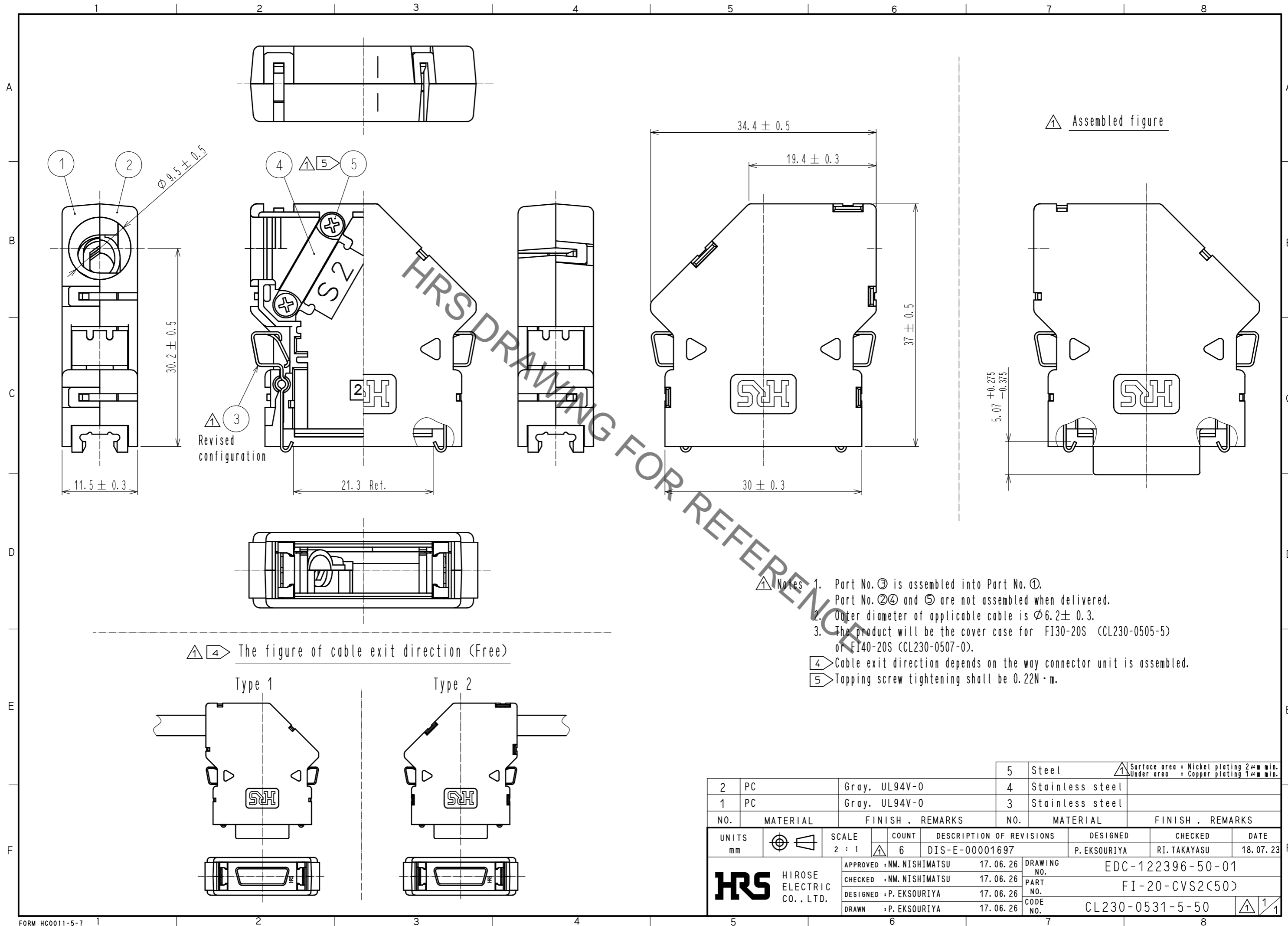
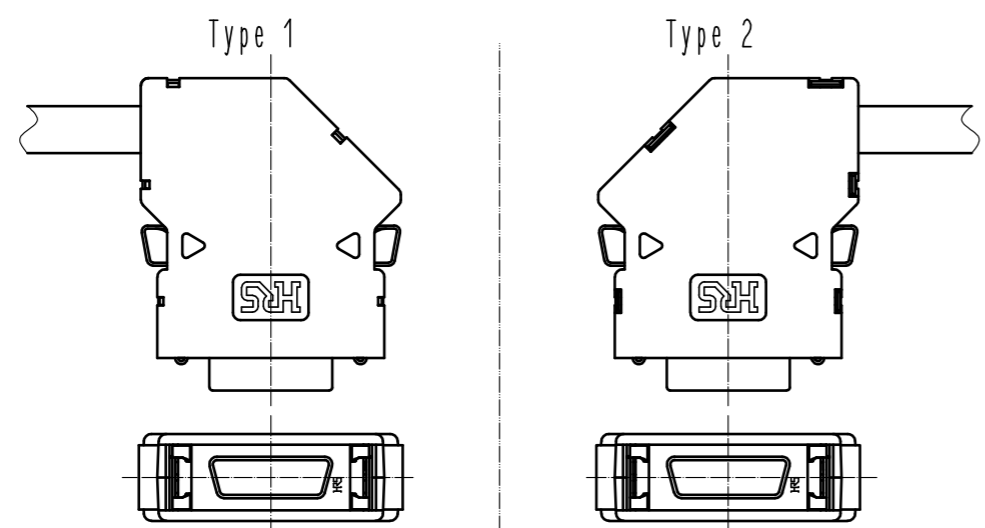


Jun.1.2023 Copyright 2023 HIROSE ELECTRIC CO., LTD. All Rights Reserved.  
 In case of consideration for using Automotive equipment / device which demand high reliability, kindly contact our sales window correspondents.



④ The figure of cable exit direction (Free)



- Notes
- Part No. ③ is assembled into Part No. ①.  
Part No. ②④ and ⑤ are not assembled when delivered.
  - Outer diameter of applicable cable is  $\phi 6.2 \pm 0.3$ .
  - The product will be the cover case for FI30-20S (CL230-0505-5) or FI40-20S (CL230-0507-0).
  - Cable exit direction depends on the way connector unit is assembled.
  - Tapping screw tightening shall be  $0.22N \cdot m$ .

2	PC	Gray, UL94V-0	5	Steel	① Surface area : Nickel plating 2μm min. Under area : Copper plating 1μm min.
1	PC	Gray, UL94V-0	4	Stainless steel	
			3	Stainless steel	
NO.	MATERIAL	FINISH . REMARKS	NO.	MATERIAL	FINISH . REMARKS
UNITS	mm	SCALE	2 : 1	COUNT	① 6
DESCRIPTION OF REVISIONS		DESIGNED	CHECKED		DATE
DIS-E-00001697		P. EKSOURIYA	RI. TAKAYASU		18. 07. 23
APPROVED : NM. NISHIMATSU		17. 06. 26		DRAWING NO.	
CHECKED : NM. NISHIMATSU		17. 06. 26		EDC-122396-50-01	
DESIGNED : P. EKSOURIYA		17. 06. 26		PART NO.	
DRAWN : P. EKSOURIYA		17. 06. 26		FI-20-CVS2(50)	
HRS HIROSE ELECTRIC CO., LTD.				CODE NO.	
				CL230-0531-5-50	