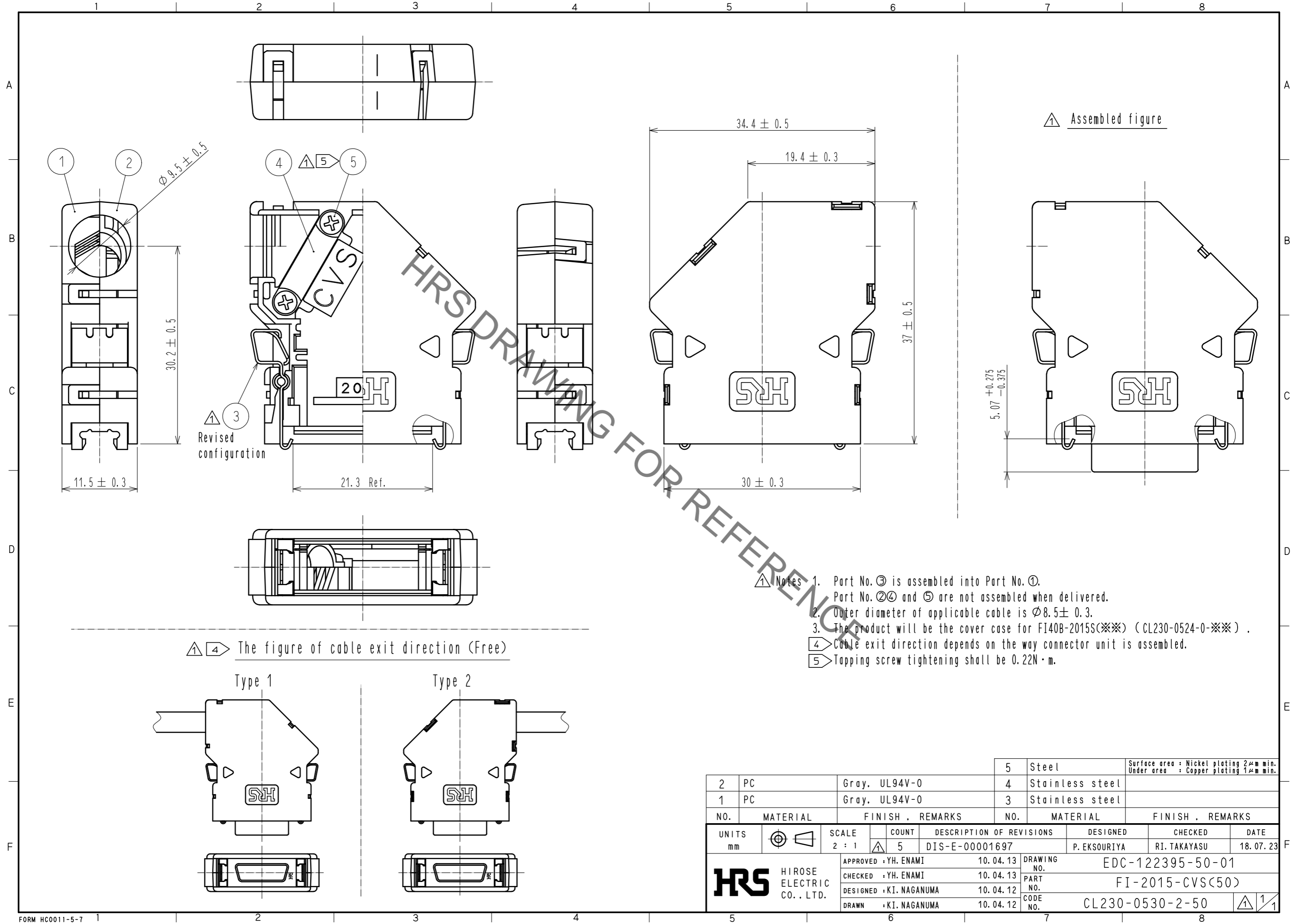
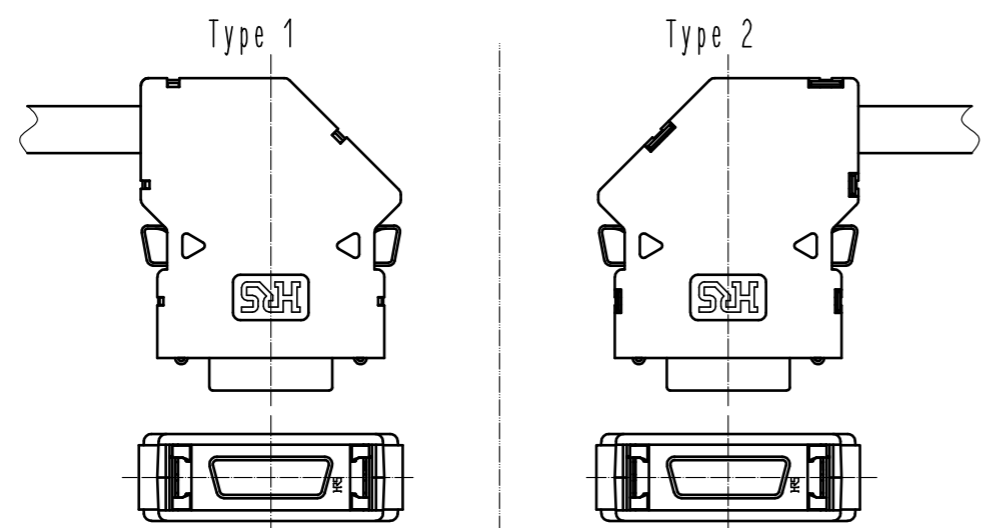


Jun.1.2023 Copyright 2023 HIROSE ELECTRIC CO., LTD. All Rights Reserved.
 In case of consideration for using Automotive equipment / device which demand high reliability, kindly contact our sales window correspondents.



④ The figure of cable exit direction (Free)



- Notes
1. Part No. ③ is assembled into Part No. ①.
Part No. ②④ and ⑤ are not assembled when delivered.
 2. Outer diameter of applicable cable is $\phi 8.5 \pm 0.3$.
 3. The product will be the cover case for FI40B-2015S(※※) (CL230-0524-0-※※).
 - ④ Cable exit direction depends on the way connector unit is assembled.
 - ⑤ Tapping screw tightening shall be 0.22N·m.

2	PC	Gray, UL94V-0	5	Steel	Surface area : Nickel plating 2μm min. Under area : Copper plating 1μm min.
1	PC	Gray, UL94V-0	4	Stainless steel	
			3	Stainless steel	
NO.	MATERIAL	FINISH . REMARKS	NO.	MATERIAL	FINISH . REMARKS
UNITS		SCALE	COUNT	DESCRIPTION OF REVISIONS	
mm		2 : 1	5	DIS-E-00001697	
HRS HIROSE ELECTRIC CO., LTD.		APPROVED : YH. ENAMI	10.04.13	DESIGNED	P. EKSOURIYA
		CHECKED : YH. ENAMI	10.04.13	CHECKED	RI. TAKAYASU
		DESIGNED : KI. NAGANUMA	10.04.12	DATE	18.07.23
		DRAWN : KI. NAGANUMA	10.04.12	DRAWING NO.	EDC-122395-50-01
				PART NO.	FI-2015-CVS(50)
				CODE NO.	CL230-0530-2-50